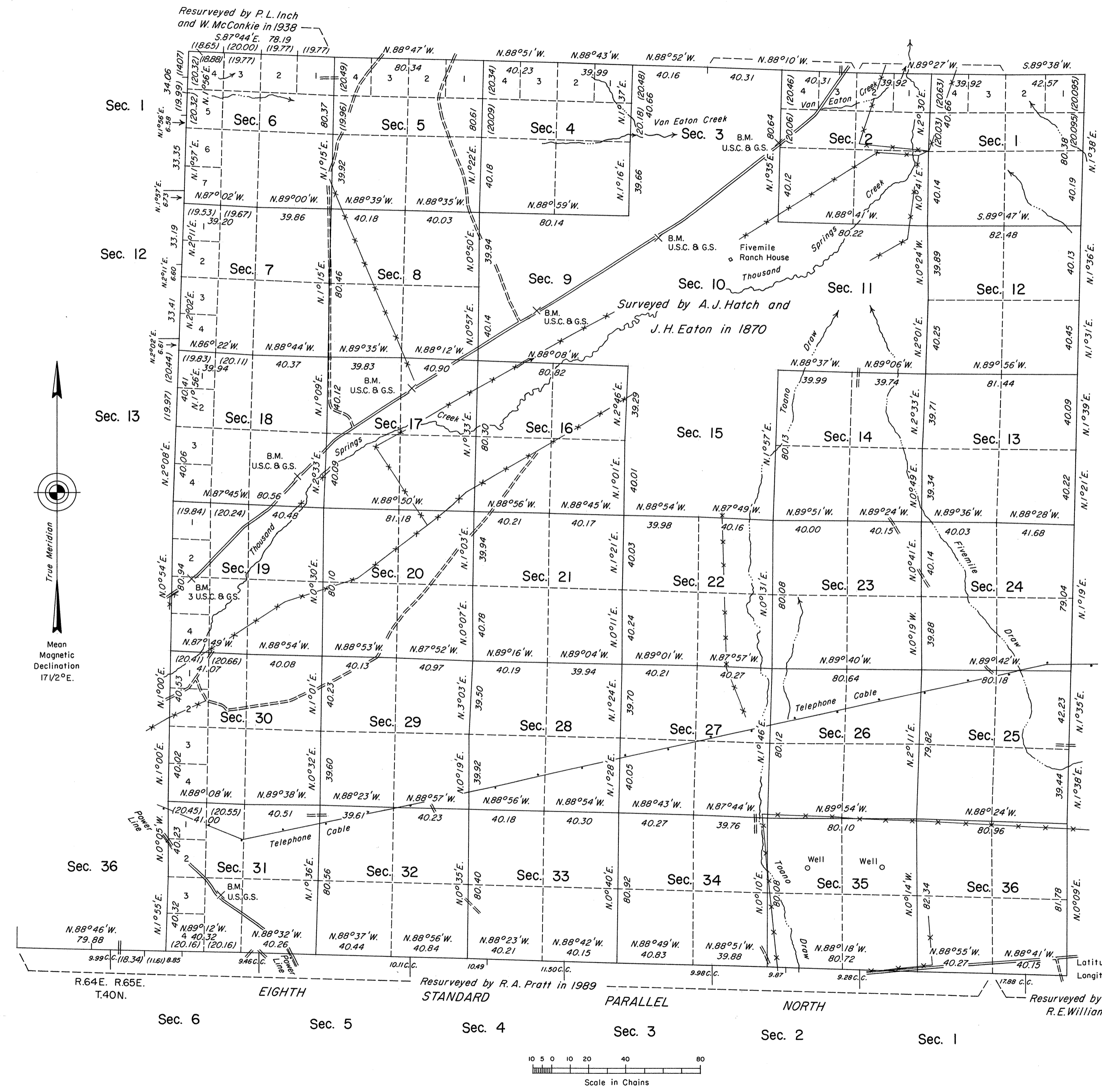


OFFICIALLY FILED
NEVADA STATE OFFICE
at 10:00 AM on June 23, 1994

TOWNSHIP 41 NORTH, RANGE 65 EAST, OF THE MOUNT DIABLO MERIDIAN, NEVADA

DEPENDENT RESURVEY



A history of surveys is contained in the field notes.

This plat represents the dependent resurvey of the east and west boundaries, a portion of the north boundary and a portion of the subdivisional lines of Township 41 North, Range 65 East, Mount Diablo Meridian, Nevada, designed to restore the corners in their true original locations according to the best available evidence.

The lottings and areas are as shown on the plat approved November 9, 1870.

Survey executed by Robert A. Pratt, Cadastral Surveyor, beginning August 7, 1989, and completed September 18, 1989, pursuant to Special Instructions dated May 18, 1989, for Group No. 676, Nevada.

UNITED STATES DEPARTMENT OF THE INTERIOR
BUREAU OF LAND MANAGEMENT

Reno, Nevada June 15, 1994

This plat is strictly conformable to the approved field notes, and the survey, having been correctly executed in accordance with the requirements of law and the regulations of this Bureau, is hereby accepted.

For the Director

John S. Parrish

Chief Cadastral Surveyor, Nevada

T.41N., R.65E., M.D.M.