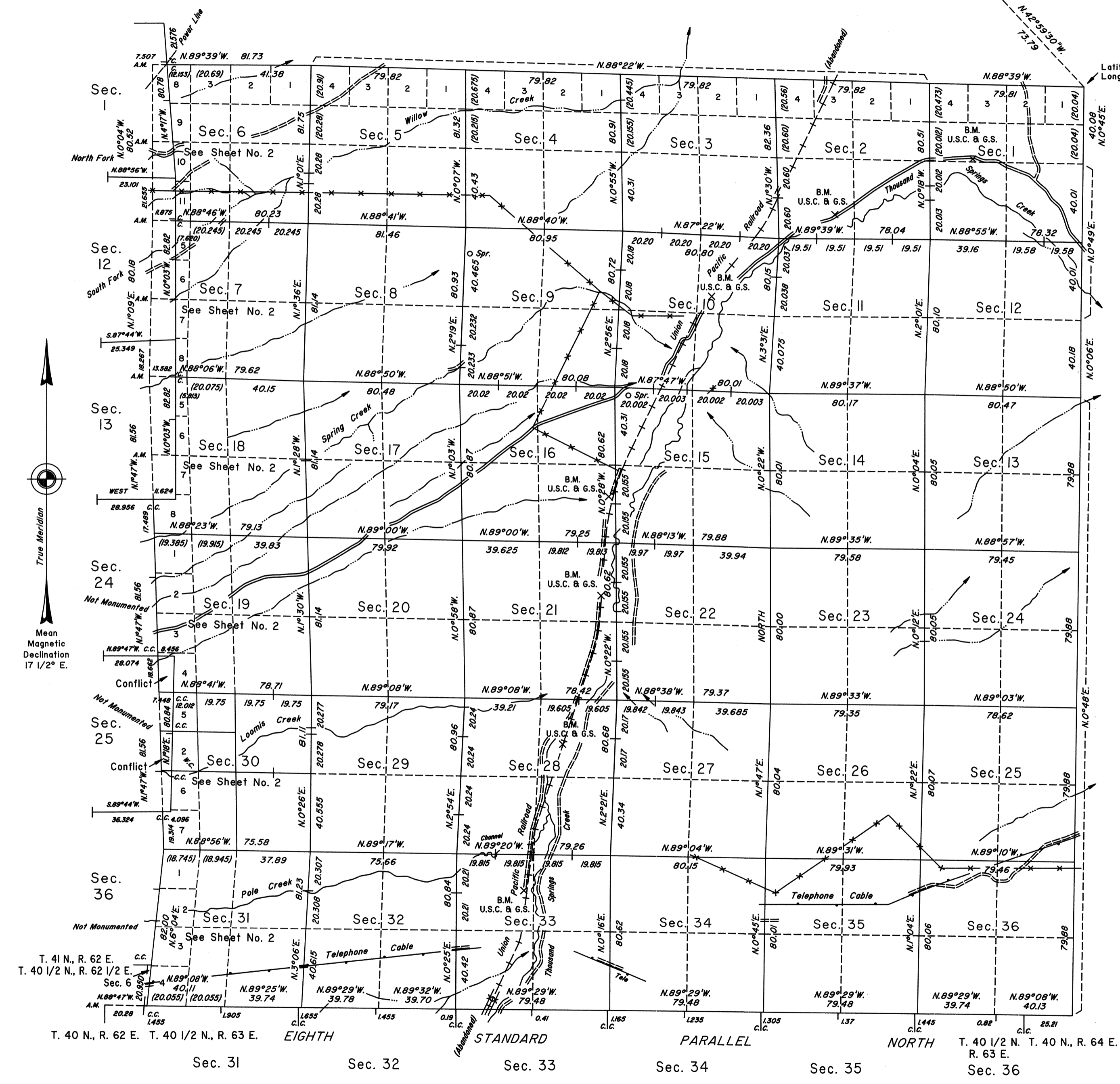


TOWNSHIP 41 NORTH, RANGE 63 EAST, OF THE MOUNT DIABLO MERIDIAN, NEVADA

DEPENDENT RESURVEY AND SUBDIVISION

"RED POINT"
U.S.C. & G.S.

Latitude 41°28'29.41"N.
Longitude 114°46'51.75"W.
NAD 27



A history of surveys is contained in the field notes.

The Eighth Standard Parallel North, through Range 63 East and a portion of Range 62 East, the west boundary of Township 41 North, Range 64 East, and the east boundary of Township 41 North, Range 62 East, were dependently resurveyed concurrently under this same Group.

This plat, in two sheets, represents the dependent resurvey of the west and north boundaries and the subdivisional lines, designed to restore the corners in their true original locations according to the best available evidence, and the subdivision of section 30, Township 41 North, Range 63 East, Mount Diablo Meridian, Nevada.

Except as indicated hereon, the lottings and areas are as shown on the plat approved December 21, 1880.

Survey executed by Robert A. Pratt and Ronald E. Williams, Cadastral Surveyors, beginning May 11, 1990, and completed September 12, 1990, pursuant to Special Instructions dated May 18, 1989, and Supplemental Special Instructions dated July 25, 1990, for Group No. 676, Nevada.

For enlargements of sections 6, 7, 18, 19, 30 and 31, see Sheet No. 2.

UNITED STATES DEPARTMENT OF THE INTERIOR
BUREAU OF LAND MANAGEMENT

Reno, Nevada June 18, 1996

This plat is strictly conformable to the approved field notes, and the survey, having been correctly executed in accordance with the requirements of law and the regulations of this Bureau, is hereby accepted.

For the Director

Robert H. Thompson

Acting Chief Cadastral Surveyor, Nevada