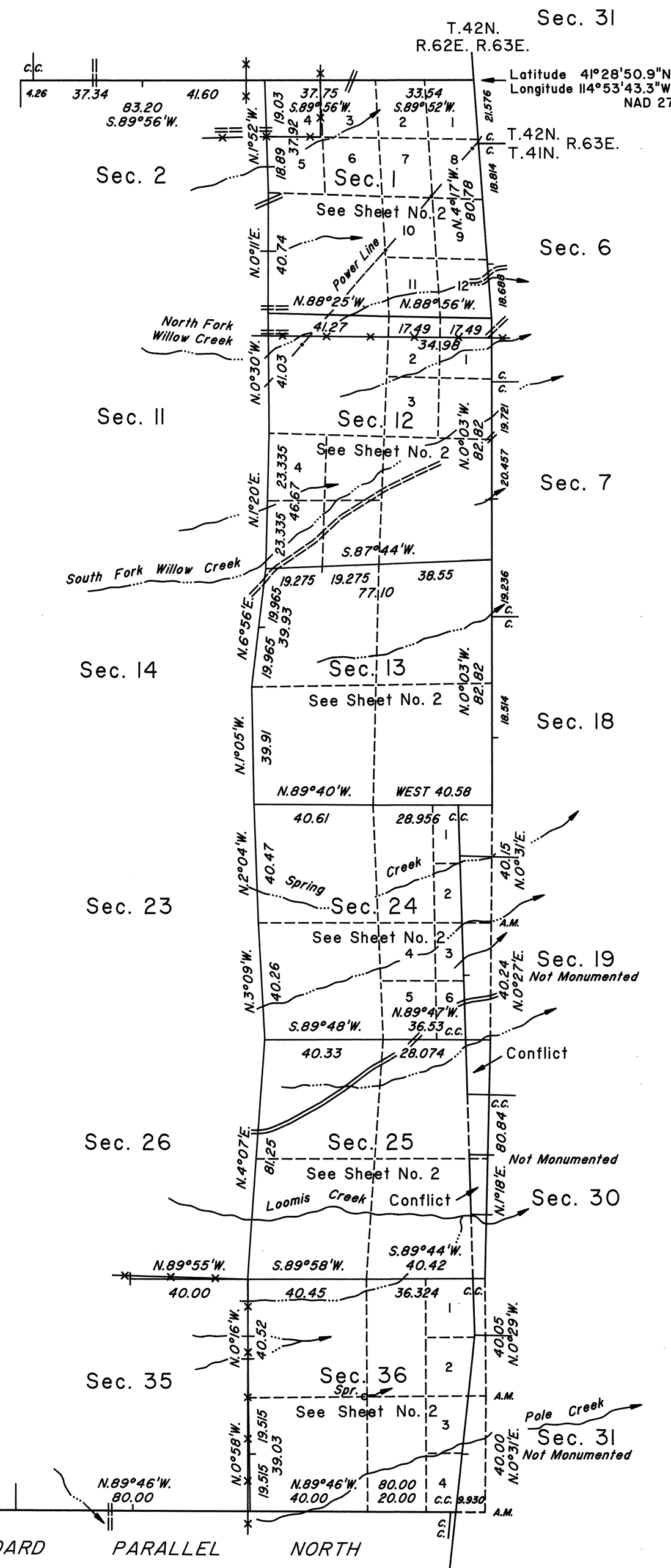


TOWNSHIP 41 NORTH, RANGE 62 EAST, OF THE MOUNT DIABLO MERIDIAN, NEVADA

DEPENDENT RESURVEY

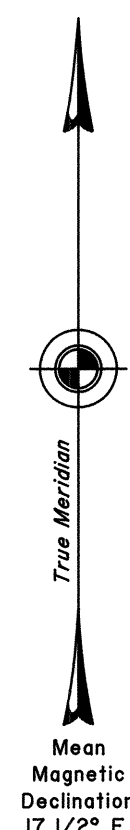
Sec. 35 Sec. 36



Surveyed by

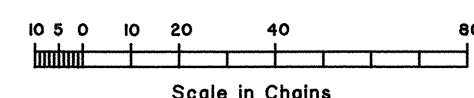
H. Fitzhugh

in 1887



Sec. 33 Sec. 34

EIGHTH STANDARD PARALLEL NORTH



A history of surveys is contained in the field notes.

The west boundary of Township 41 North, Range 63 East, was dependently resurveyed concurrently under this same Group.

This plat, in two sheets, represents the dependent resurvey of the Eighth Standard Parallel North, through a portion of Range 62 East, the east boundary, a portion of the north boundary and a portion of the subdivisional lines of Township 41 North, Range 62 East, Mount Diablo Meridian, Nevada, designed to restore the corners in their true original locations according to the best available evidence.

Except as indicated hereon, the lottings and areas are as shown on the plat approved December 15, 1890.

Survey executed by Robert A. Pratt and Ronald E. Williams, Cadastral Surveyors, beginning May 17, 1990, and completed September 10, 1990, pursuant to Special Instructions dated May 18, 1989, and Supplemental Special Instructions dated July 25, 1990, for Group No. 676, Nevada.

For enlargements of sections 1, 12, 13, 24, 25 and 36, see Sheet No. 2.

UNITED STATES DEPARTMENT OF THE INTERIOR
BUREAU OF LAND MANAGEMENT

Reno, Nevada June 18, 1996

This plat is strictly conformable to the approved field notes, and the survey, having been correctly executed in accordance with the requirements of law and the regulations of this Bureau, is hereby accepted.

For the Director

Robert H. Thompson

Acting Chief Cadastral Surveyor, Nevada

OFFICIALLY FILED
NEVADA STATE OFFICE
at 10:00 AM on August 22, 1996

T.41N., R.62E., M.D.M.