

ORIGINAL

TOWNSHIP 41 NORTH, RANGE 55 EAST, OF THE MOUNT DIABLO MERIDIAN, NEVADA

DEPENDENT RESURVEY

OFFICIALLY FILED
NEVADA LAND OFFICE
10:00 AM 9/28/1970

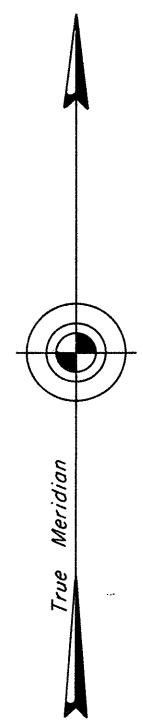
A history of the earlier surveys is contained in the field notes.

This plat represents a dependent resurvey of a portion of the Eighth Standard Parallel North through R. 55 E., a portion of the south boundary of T. 42 N., R. 55 E., and a portion of the subdivisional lines of T. 41 N., R. 55 E., designed to restore the corners in their true original locations according to the best available evidence.

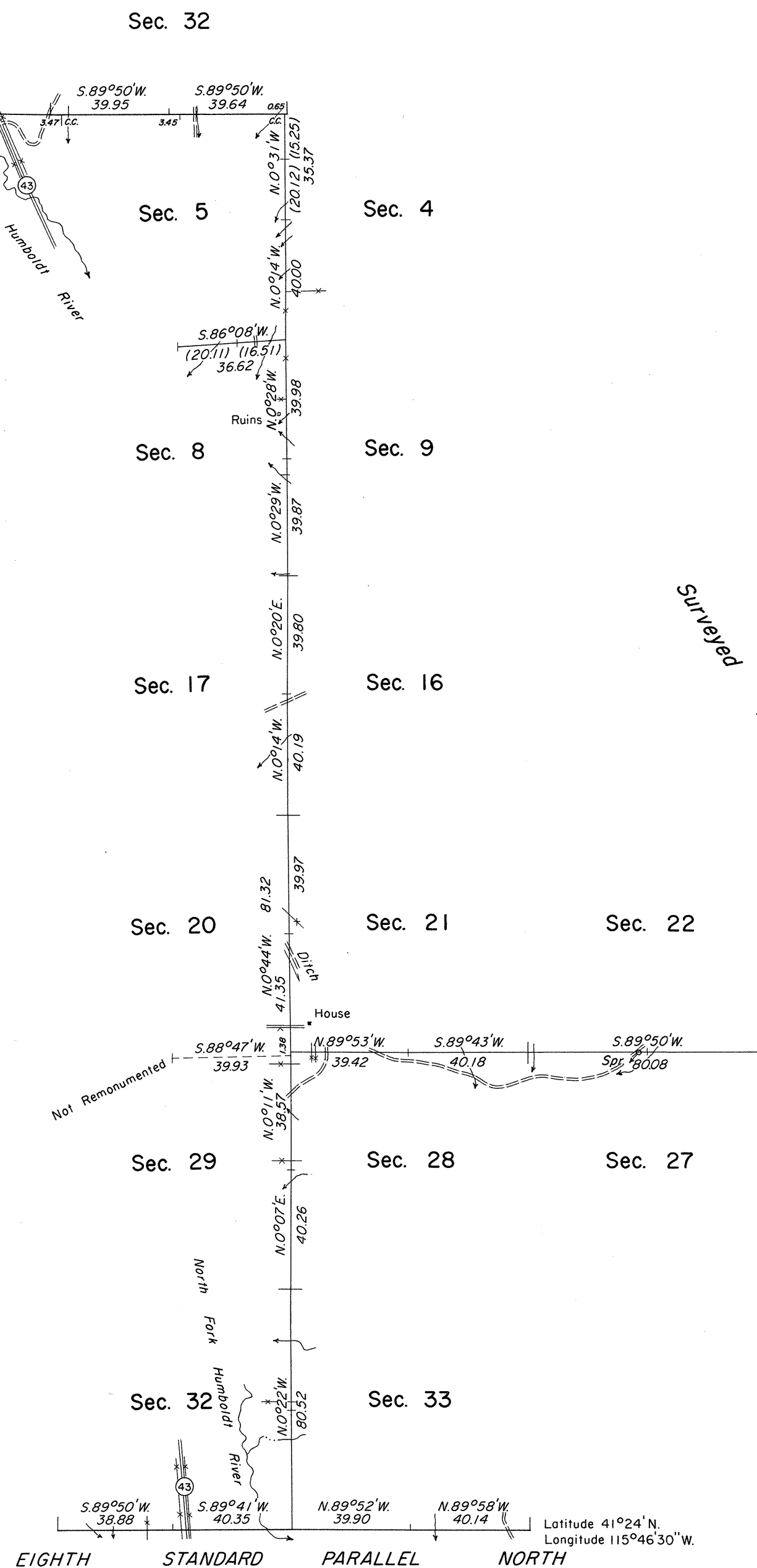
This resurvey was executed by Eldon W. Sibley, Cadastral Surveyor, May 22, 1963, to October 19, 1967, under Special Instructions dated February 27, 1963, for Group No. 404, Nevada.

Surveyed by H. B. Maxson in 1900

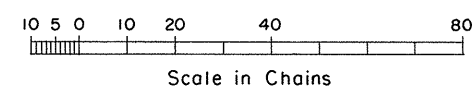
Surveyed by A. J. Hatch and J. H. Eaton in 1871



Mean Magnetic Declination 17 3/4° E.



EIGHTH STANDARD PARALLEL NORTH
Latitude 41°24'N.
Longitude 115°46'30"W.



UNITED STATES DEPARTMENT OF THE INTERIOR
BUREAU OF LAND MANAGEMENT
Washington, D. C. August 31, 1970

This plat is strictly conformable to the approved field notes, and the survey, having been correctly executed in accordance with the requirements of law and the regulations of this Bureau, is hereby accepted.

For the Director

Clark I. Lumm

Chief, Division of Cadastral Survey

T41N R55E