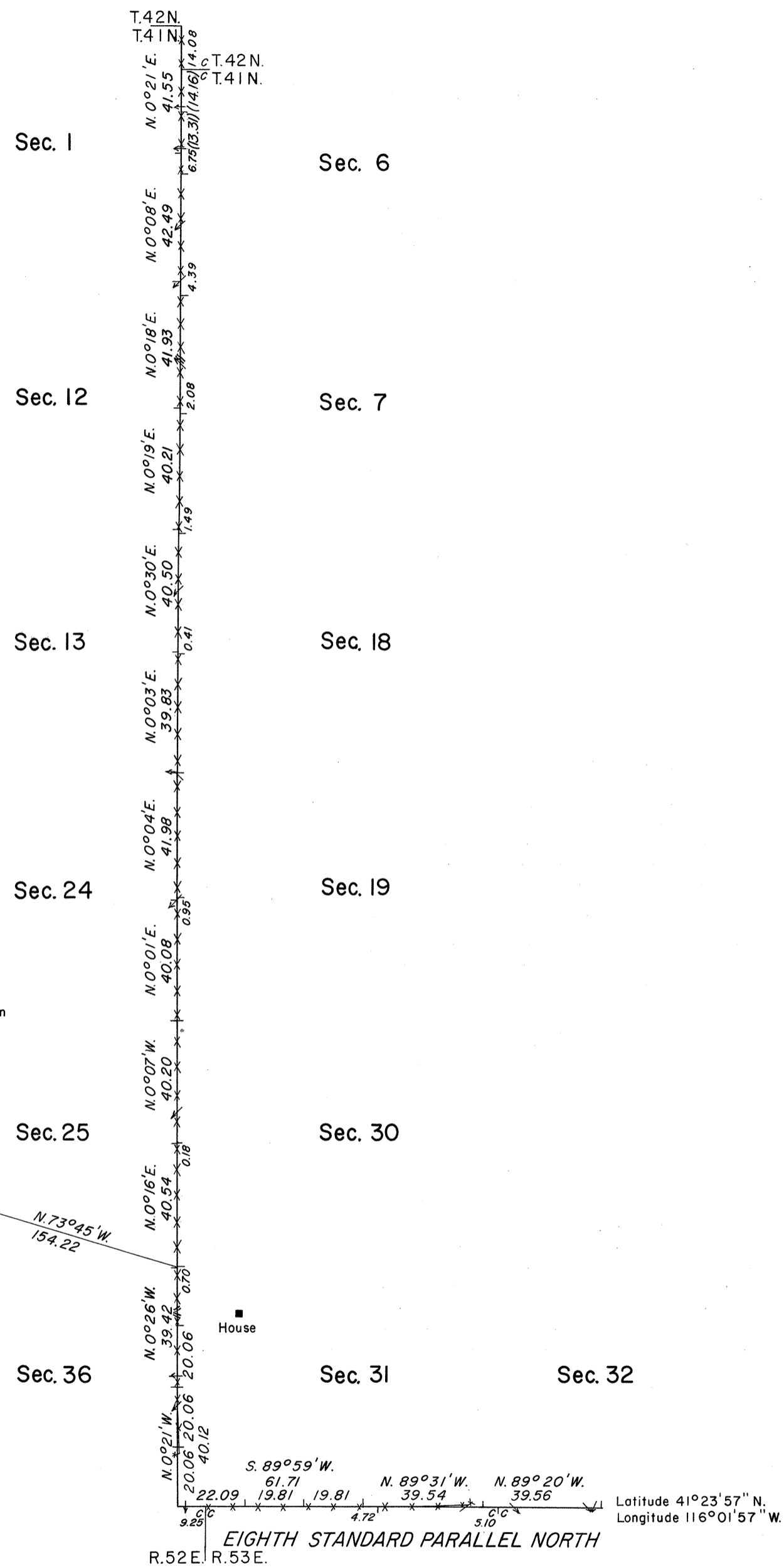


OFFICIALLY FILED
NEVADA STATE OFFICE
10:00 a.m., Oct 28, 1977

TOWNSHIP 41 NORTH, RANGE 53 EAST, OF THE MOUNT DIABLO MERIDIAN, NEVADA. DEPENDENT RESURVEY



A history of surveys is contained in the field notes.

This plat represents a dependent resurvey of the Eighth Standard Parallel North, through a portion of R. 53 E., and the east boundary of T. 41 N., R. 52 E., Mount Diablo Meridian, Nevada, designed to restore the corners in their true original locations according to the best available evidence.

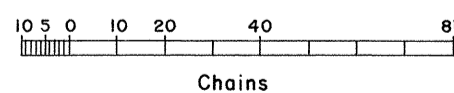
Survey executed by Duane R. Garoutte, Cadastral Surveyor, June 7 to June 24, 1976, under Special Instructions dated May 28, 1976, for Group No. 540, Nevada.

UNITED STATES DEPARTMENT OF THE INTERIOR
BUREAU OF LAND MANAGEMENT
Washington, D.C. September 20, 1977

This plat is strictly conformable to the approved field notes, and the survey, having been correctly executed in accordance with the requirements of law and the regulations of this Bureau, is hereby accepted.

For the Director

Chief, Division of Cadastral Survey



Mean Magnetic Declination
17 1/2° E.

