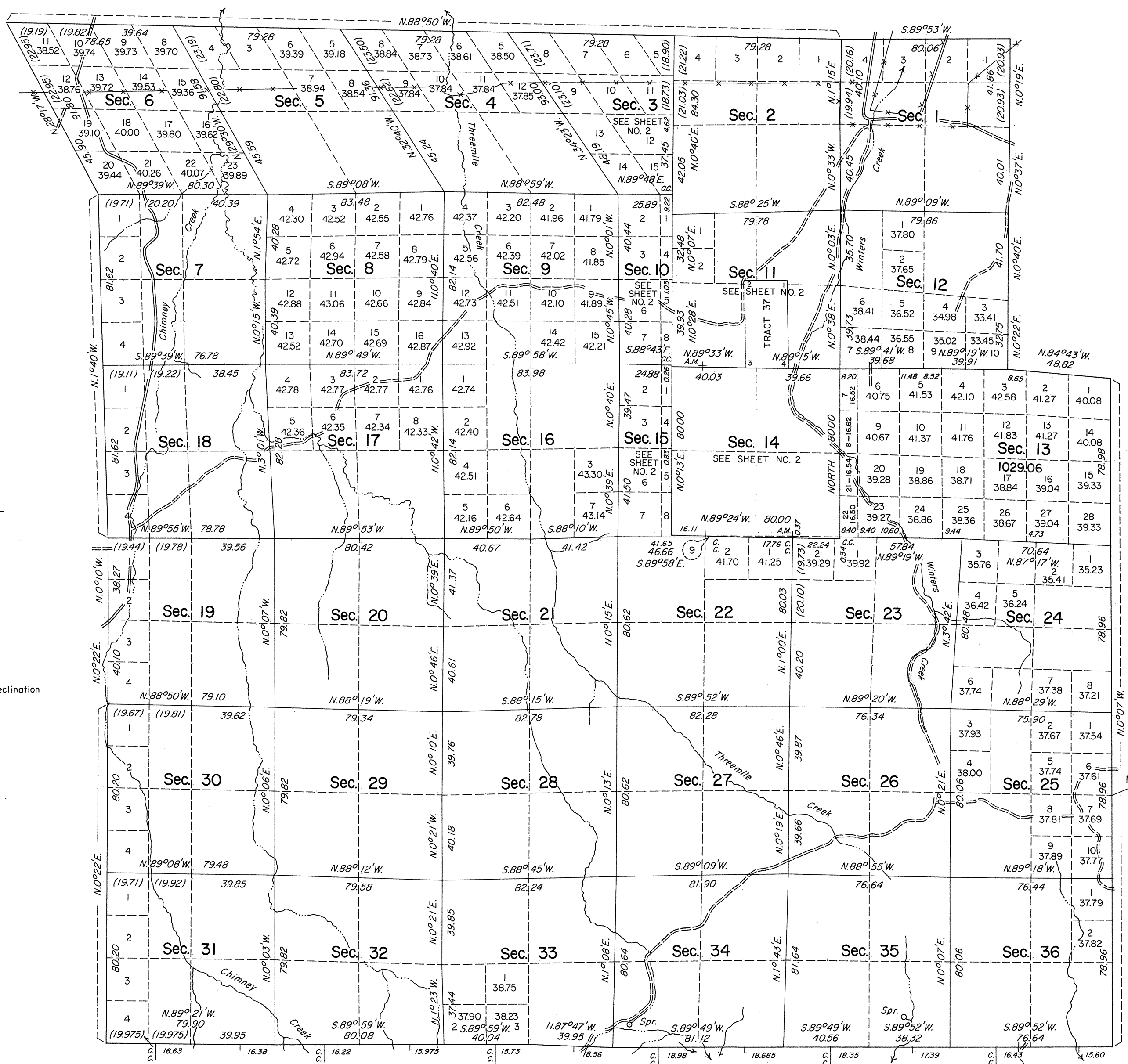


TOWNSHIP 41 NORTH, RANGE 48 EAST, OF THE MOUNT DIABLO MERIDIAN, NEVADA  
DEPENDENT AND INDEPENDENT RESURVEYS

OFFICIALLY FILED  
NEVADA STATE OFFICE  
10:00 A.M. SEPTEMBER 19, 1984



True Meridian  
Mean Magnetic Declination  
17°E.

A history of surveys is contained in the field notes.

This plat in two sheets represents a dependent resurvey of the east, west and north boundaries and a portion of the subdivisional lines of T. 41 N., R. 48 E., designed to restore the corners in their true original locations according to the best available evidence; an independent resurvey of section 13 superseding that section as shown on plat approved October 14, 1882, and the metes and bounds survey of Tract 37.

Tract 37, shown hereon, represents the position and form of the E½SE¼ of section 10, as shown on the plat approved October 14, 1882, and conveyed to Manuel Valencia in Patent No. 147832 on August 4, 1910. This Tract is located as a unit and marked on the ground according to the best available evidence of its legal boundary.

Lottings and areas, except as shown hereon, are as shown on the plats approved June 24, 1873 and October 14, 1882.

Survey executed by Robert A. Pratt, Cadastral Surveyor, September 1, 1981 to September 28, 1983, under Special Instructions dated July 17, 1981 and Supplemental Special Instructions dated September 2, 1983, for Group No. 595, Nevada.

For enlargements of sections 3, 10, 11, 14 and 15, and Tract 37, see Sheet No. 2.

Total Area of Tract Segregation	80.00 acres
Total Area Independently Resurveyed	1,029.06 acres
Total Area	1,109.06 acres

UNITED STATES DEPARTMENT OF THE INTERIOR  
BUREAU OF LAND MANAGEMENT

Reno, Nevada August 31, 1984

This plat is strictly conformable to the approved field notes, and the survey, having been correctly executed in accordance with the requirements of law and the regulations of this Bureau, is hereby accepted.

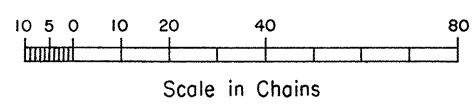
For the Director

*Lacel E. Bland*

Chief Cadastral Surveyor

Resurveyed by Eldon W. Sibley and Robert A. Pratt in 1970  
EIGHTH R.47E. R.48E. STANDARD PARALLEL NORTH

Sec. 2      Sec. 1      Sec. 6      Sec. 5      Sec. 4      Sec. 3



Latitude 41°24'03.5"N.  
Longitude 116°31'18.9"W.