

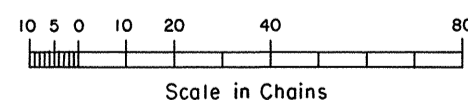
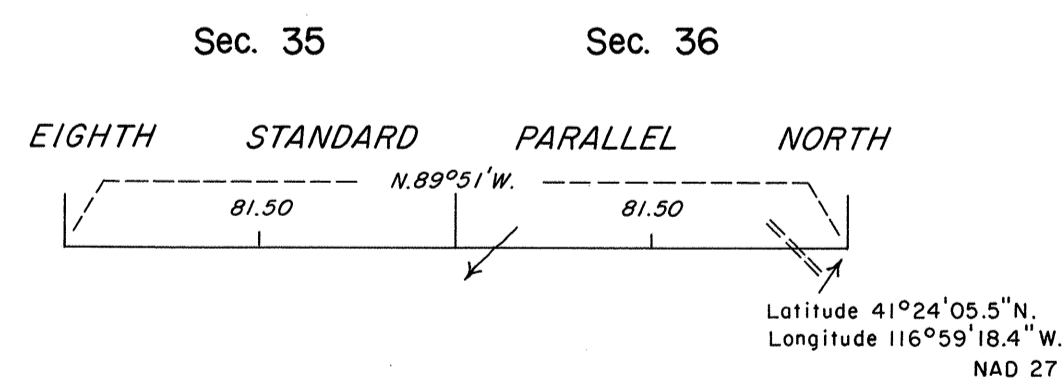
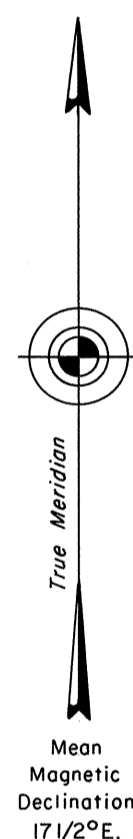
ORIGINAL

TOWNSHIP 41 NORTH, RANGE 44 EAST, OF THE MOUNT DIABLO MERIDIAN, NEVADA
DEPENDENT RESURVEY

History of the earlier surveys is contained in the field notes.

This plat represents the dependent resurvey of the Eighth Standard Parallel North, through a portion of R. 44 E., designed to restore the corners in their true original locations according to the best available evidence.

Survey executed by James A. Mack, Cadastral Surveyor, beginning July 23, 1987 and completed June 13, 1989, under Special Instructions dated July 7, 1987 for Group No. 651, Nevada.



UNITED STATES DEPARTMENT OF THE INTERIOR
BUREAU OF LAND MANAGEMENT
Reno, Nevada July 26, 1989

This plat is strictly conformable to the approved field notes, and the survey, having been correctly executed in accordance with the requirements of law and the regulations of this Bureau, is hereby accepted.

For the Director

Lucretia E. Bland

Chief Cadastral Surveyor

65

JRM

T.41N., R.44E., M.D.M.