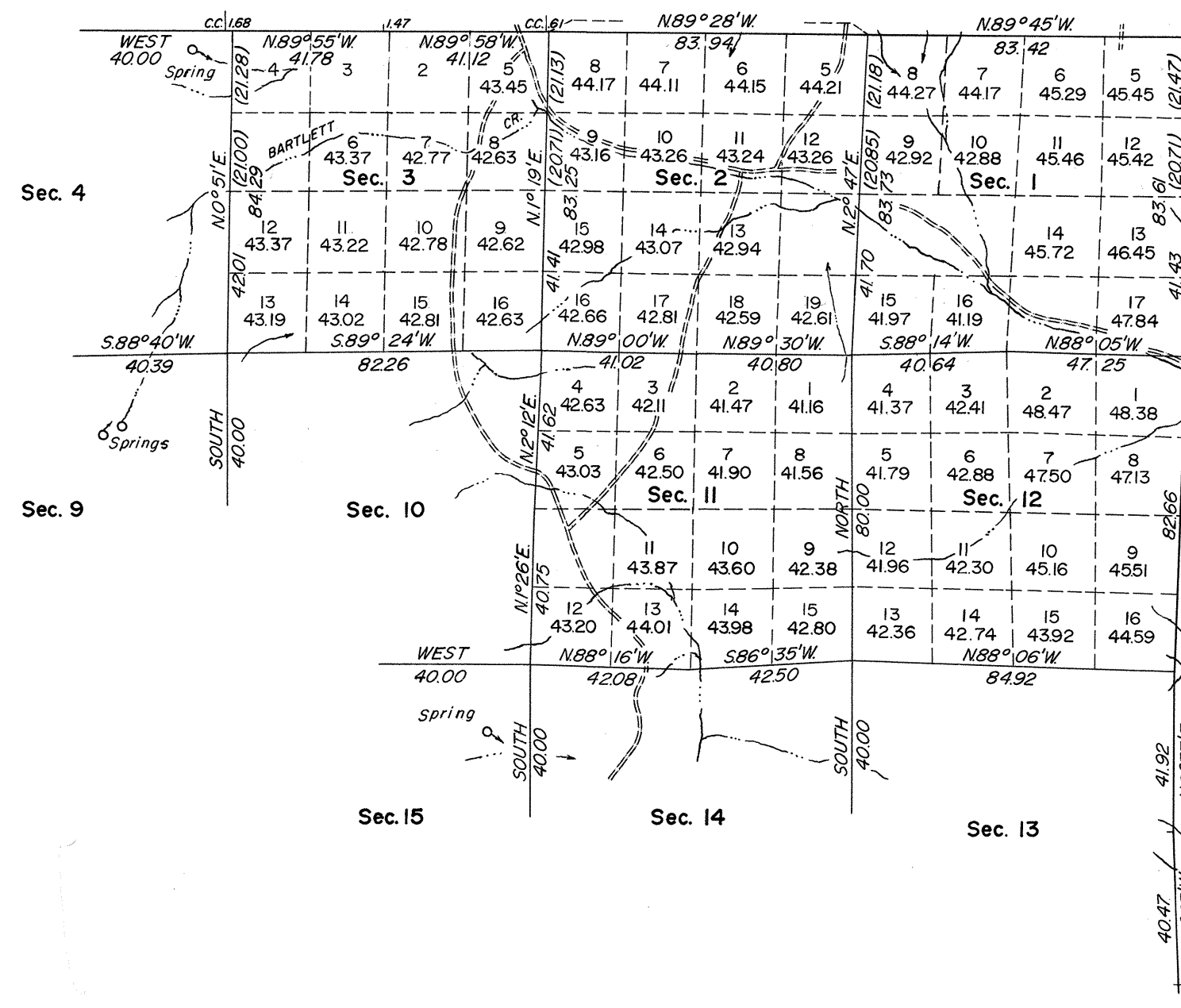


TOWNSHIP 41 NORTH, RANGE 27 EAST, OF THE MOUNT DIABLO MERIDIAN, NEVADA

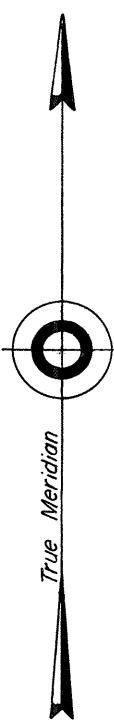
DEPENDENT RESURVEY



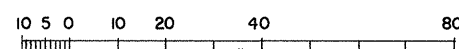
History of earlier surveys is contained in the field notes.

This plat represents a dependent resurvey of a portion of the east and north boundaries and a portion of the subdivisional lines of T. 41 N., R. 27 E., Mount Diablo Meridian, Nevada, designed to restore the corners in their true original locations, according to the best available evidence. Lottings and areas (except as shown hereon) are as shown upon the plat approved December 27, 1873.

The survey was executed by Lancel E. Bland, July 12 to July 25, 1962, under Special Instructions dated March 13, 1962, for Group No. 400, Nevada.



Mean Magnetic Declination 18°30'E.



Scale in Chains
Area Resurveyed 5,215.70 Acres

UNITED STATES DEPARTMENT OF THE INTERIOR
BUREAU OF LAND MANAGEMENT
Washington, D. C. April 14, 1964

This plat is strictly conformable to the approved field notes, and the survey, having been correctly executed in accordance with the requirements of law and the regulations of this Bureau, is hereby accepted.

For the Director

Chief, Division of Engineering

0607-A

T.41N, R.27E.