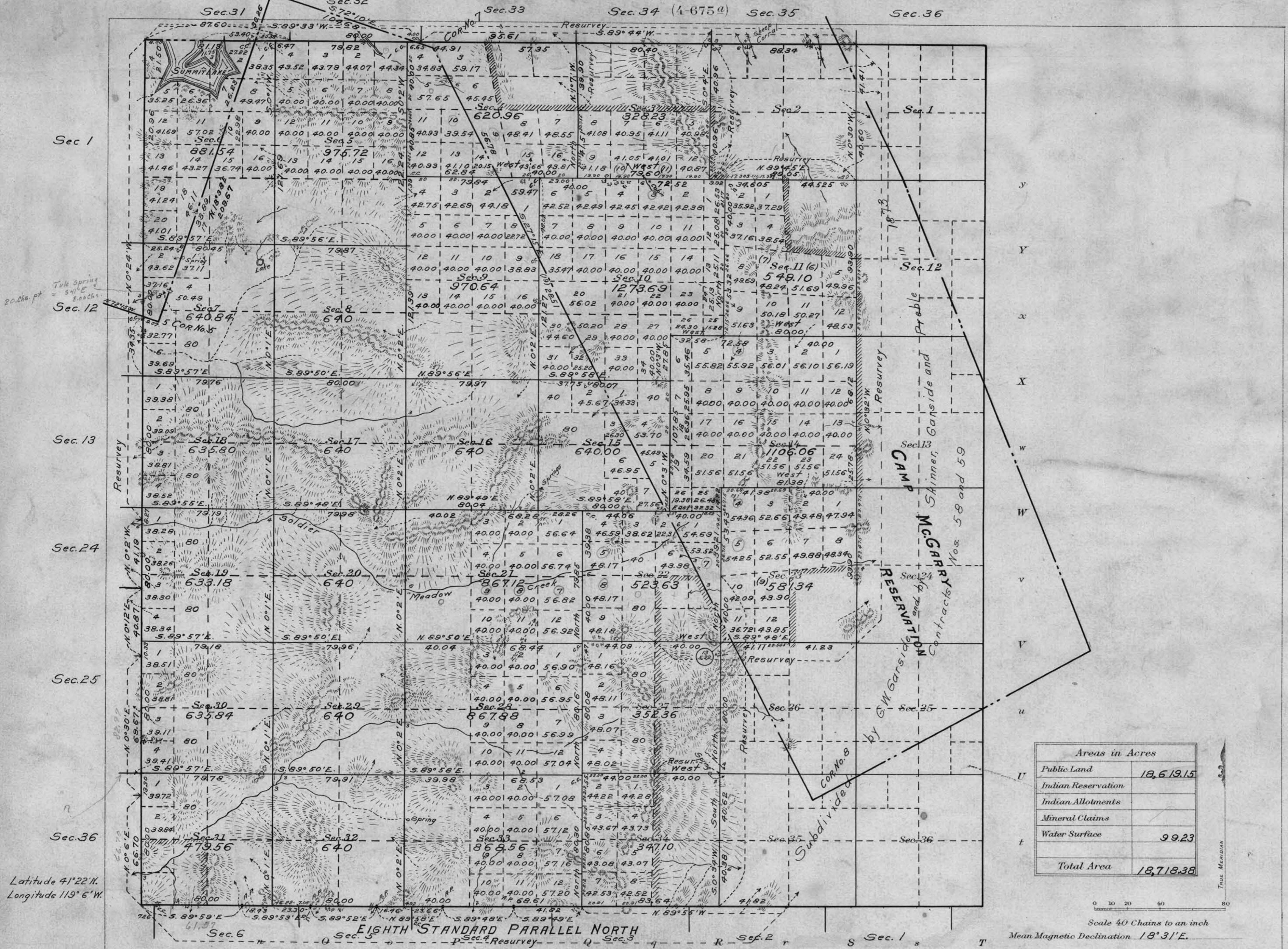


Township No. 71 North, Range No. 26 East, Mt. Diablo Meridian, Nevada.



Latitude 41°22'N.
Longitude 119°6'W.

Scale 40 Chains to an inch
Mean Magnetic Declination 18°31'E.

Surveys Designated	By Whom Surveyed	Group		Amount of Surveys		When Surveyed	
		No.	Date	Mls.	chs.	Begun	Completed
N+W Bdrs.-Resur.	A. B. Rich	3	Aug. 1, 1910	N. Bdy.	5-31-35	Nov. 17, 1910	Nov. 23, 1910
Camp McGarry-Resur.	"	"	"	W. "	6-40-96	Dec. 7, "	Dec. 24, "
8 th St. Par. N.-Resur.	J. D. Archer	"	"	8 th St.	4-74-07	Nov. 19, "	Nov. 22, "
Subdivisions	A. B. Rich & J. D. Archer	"	"	Subs.	56-71-50	Dec. 2, "	Dec. 23, "
8 th St. Par. N.-Resur.	J. D. Archer	"	"			May 7, 1911	May 11, 1911
N+W Bdrs.	W. A. Pray	"	Oct. 12, 1912			Nov. 11, 1912	Nov. 12, 1912
Subdivisions	"	"	"			Nov. 11, 1912	Nov. 14, 1912
						Nov. 11, 1912	Nov. 16, 1912

The above map of Township No. 71 N., Range No. 26 E. of the Mt. Diablo Meridian, Nevada is strictly conformable to the field notes of the survey thereof on file in this office, which have been examined and approved

U. S. Surveyor General's Office.
Reno, Nevada, May 23, 1914.

Matthew Kyle
Surveyor General.