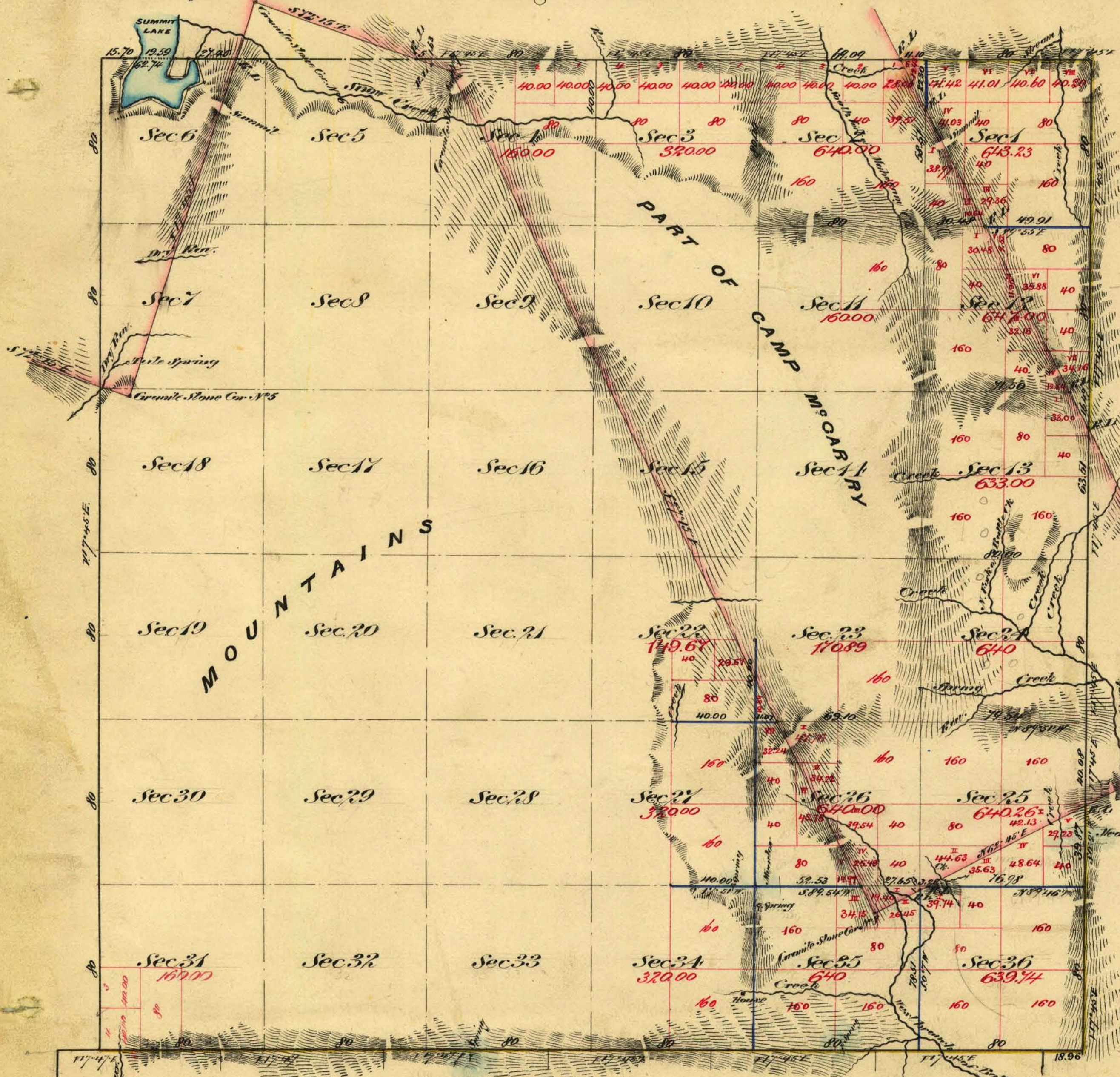


Township N^o 41 North

Range N^o 26 East

Mount Diablo Meridian



Meanders of Summit Lake

Sec	Course	Dist	Area	Course	Dist	Area
Beginning	S 17° E	15.70	12.00			
	E. Circumferential Stone Cor. N ^o 5	19.59	8.00			
	S 56° 56' E thence	62.74	12.00			
	S 17° 1/2' W	29.00	16.00			
	S 70° E	8.00	17.00			
	S 7° W	11.00	13.00			
	E. Circumferential Stone Cor. N ^o 9	14.00	15.00			
			57.00			
			23.00			
			124.00			
			184.00			

Aggregate area of land surveyed within Camp Mc Carry Reservation 4,100.78
 Summit Lake 68.64
 Land surveyed outside of 3733.07
 Estimated of Camp Mountains 15458.15
 Aggregate 23024.64

Commenced Oct 14 1873
 Completed " " "

Subdivision line not otherwise noted runs with a variation of 7' 46" East

Surveys designated	By whom surveyed	Date of Contract	Ampt. of Surveys	When Surveyed	No. Cont.
West boundary of Township	G. W. Jarvis	Dec. 7 th 1872	4 - 10 - 00	1873	55
N.E. " "	" "	July 9 th 1873	4 - 00 - 112	"	59
N.E. " (Yellow)	Skinner Jarvis & Noble	July 10 th "	10 - 17 - 116	"	58
Subdivisions of Camp Mc Carry	G. W. Jarvis	July 9 th "	11 - 53 - 27	Sept. 1873	59
Boundary lines	" "	" "	1 - 14 - 00	"	"
Subdivision lines Blue	Skinner Jarvis & Noble	July 10 th "	7 - 11 - 30	Oct. 1873	58

The above Map of Township N^o 41 North Range N^o 26 East Mount Diablo Meridian is strictly conformable to the field notes of surveys thereof on file in this office which have been examined and approved by Surveyor General J. H. Virginia & Co. Surveyors Dec 27th 1873

0564

T41N, R26E. - VD

E. S. Davis
 U.S. Survey Genl. Sur.