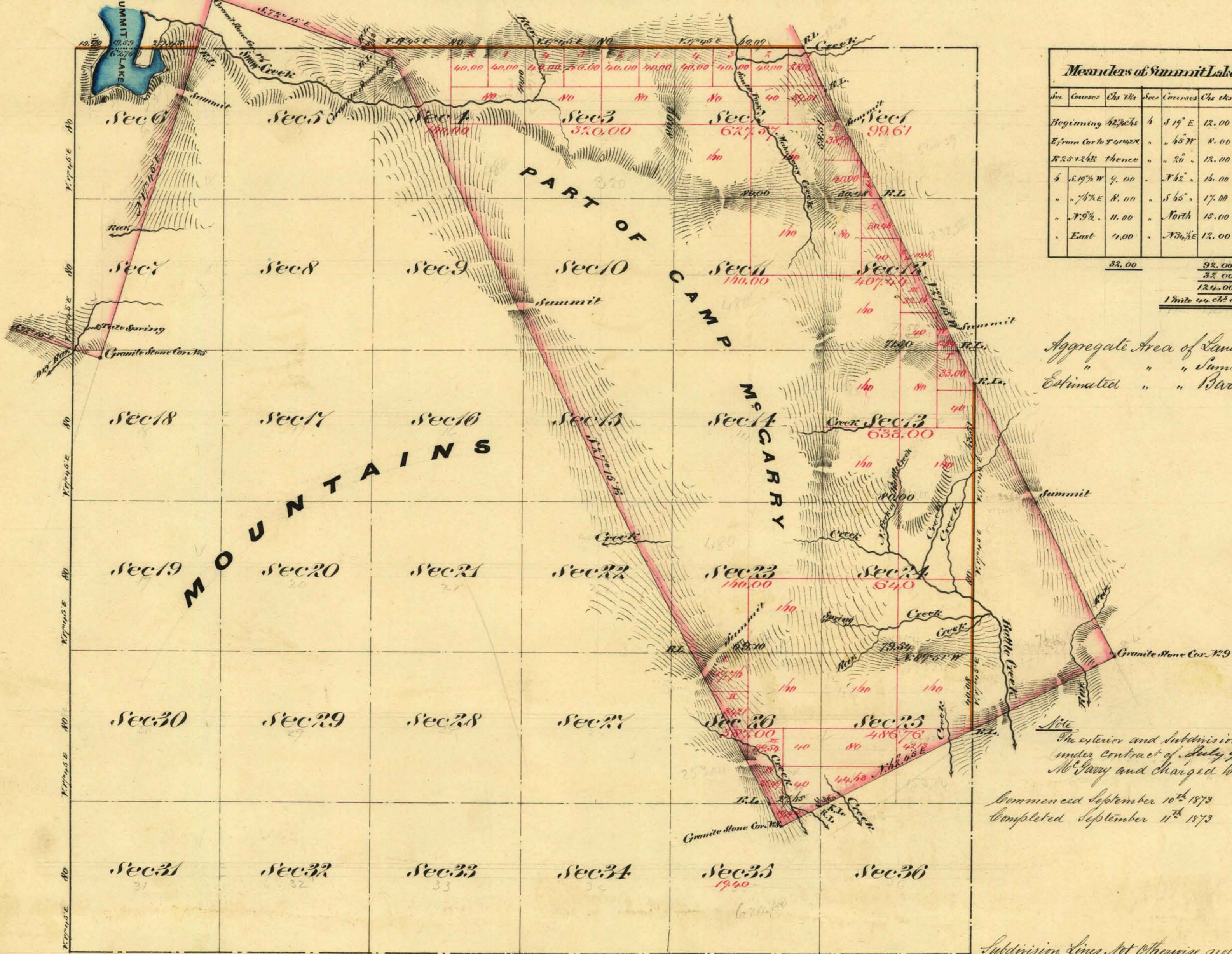


Township N<sup>o</sup> 41 North

Range N<sup>o</sup> 26 East

Mount Diablo Meridian



**Meanders of Summit Lake**

Sec	Courses	Chs	ths	Sec	Courses	Chs	ths
Beginning	42° 30' E	4	19	12.00			
E from Cor to F	45° W		8	8.00			
F to S + 268	thence		20	18.00			
	5° 19' W		9	16.00			
	47° E		8	17.00			
	75°		11	15.00			
	East		11	17.00			
				<b>33.00</b>			
					<b>92.00</b>		
					<b>32.00</b>		
					<b>124.00</b>		

1 mile 49. chs 40ths

Aggregate Area of Land Surveyed within Camp McJarry Reservation 4,100.50

" " Summit Lake 155.50

Estimated " " Barren Mountains 18,853.22

**Aggregate 23,024.19**

Note  
The exterior and subdivision lines as surveyed by G. W. Garside under contract of July 9<sup>th</sup> 1873 are within the limits of Camp McJarry and changed to special appropriation  
Commenced September 10<sup>th</sup> 1873  
Completed September 11<sup>th</sup> 1873

Subdivision Lines Not Otherwise noted run with a variation of 17' 45" East

The above Map of Township N<sup>o</sup> 41 North Range N<sup>o</sup> 26 East Mount Diablo Meridian is strictly conformable to the field notes of the surveys thereof on file in this Office which have been examined and approved  
U.S. Surveyor General's Office  
Virginia City Nevada  
October 31<sup>st</sup> 1873

Surveys Designated	By Whom Surveyed	Date of Contract	Am <sup>t</sup> of Surveys M <sup>o</sup> chs ths	When Surveyed
West Boundary of Township	G. W. Garside	December 7 <sup>th</sup> 1872	6 00 00	1873
178 " (Yellow)	" " "	July 9 <sup>th</sup> 1873	6 00 42	"
Subdivision lines	" " "	" " "	11 53 27	September 1873
Meander lines	" " "	" " "	1 44 00	"

0563

T41N.R26E. U.S. Surveyor General Nevada  
E. S. Davis V.D.