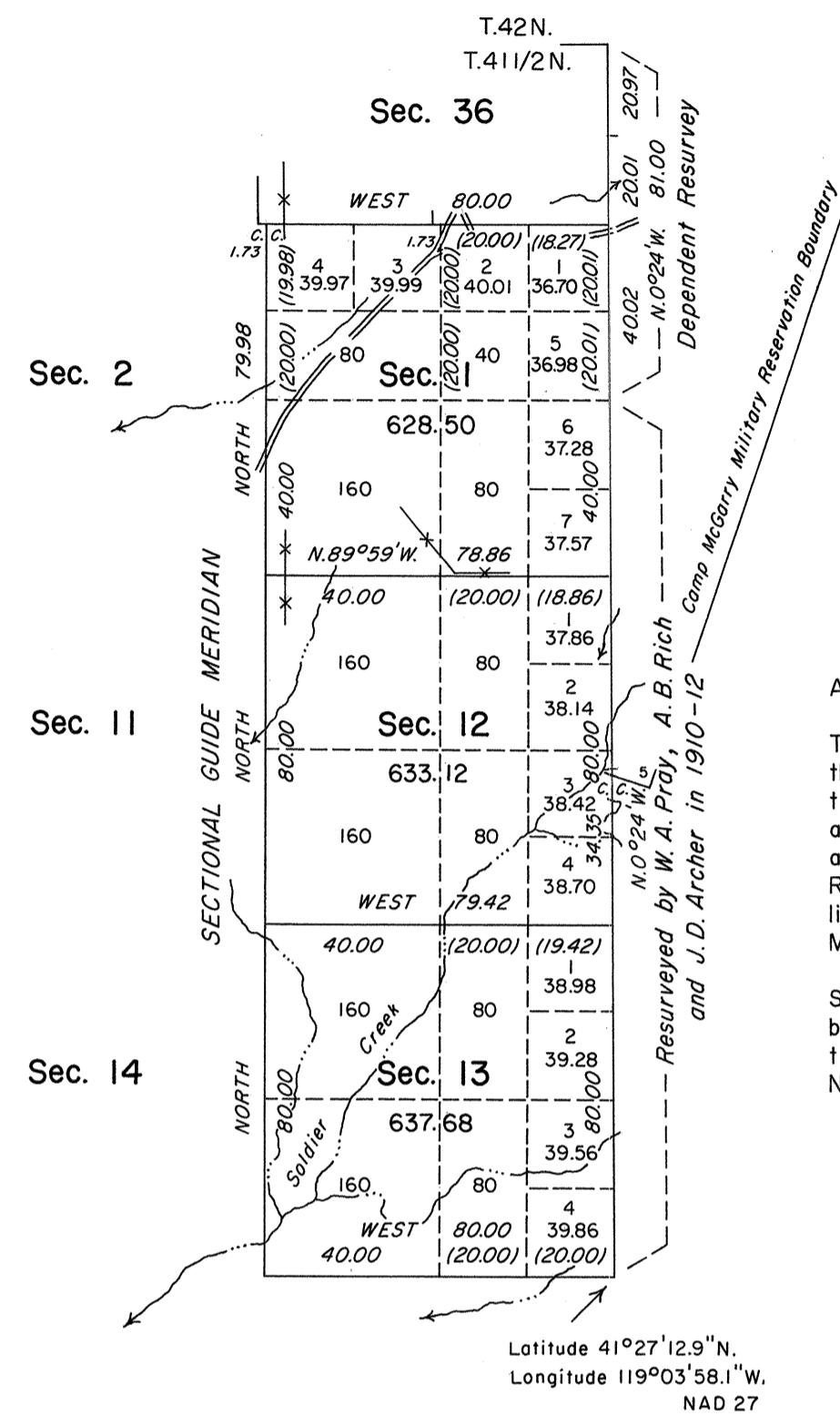


TOWNSHIP 41 NORTH, RANGE 25 EAST, OF THE MOUNT DIABLO MERIDIAN, NEVADA
DEPENDENT RESURVEY AND SURVEY

OFFICIALLY FILED
NEVADA STATE OFFICE
at 10:00 AM on May 17, 1995

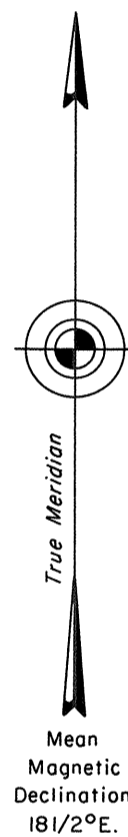


A history of surveys is contained in the field notes.

This plat represents the dependent resurvey of a portion of the west boundary of Township 41 North, Range 26 East, designed to restore the corners in their true original locations according to the best available evidence; and the survey of a portion of the south boundary of Township 41 1/2 North, Range 25 East; and the survey of a portion of the subdivisional lines of Township 41 North, Range 25 East, Mount Diablo Meridian, Nevada.

Survey executed by Robert A. Pratt, Cadastral Surveyor, beginning May 3, 1988, and completed July 29, 1988, pursuant to Special Instructions dated April 11, 1988, for Group No. 655, Nevada.

Latitude 41°27'12.9"N.
Longitude 119°03'58.1"W.
NAD 27



Unsurveyed

Unsurveyed

Surveyed by G. W. Garside in 1872-73

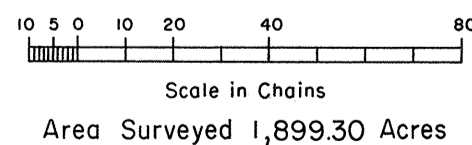
UNITED STATES DEPARTMENT OF THE INTERIOR
BUREAU OF LAND MANAGEMENT

Reno, Nevada March 16, 1995

This plat is strictly conformable to the approved field notes, and the survey, having been correctly executed in accordance with the requirements of law and the regulations of this Bureau, is hereby accepted.

For the Director

Chief Cadastral Surveyor, Nevada



GM

T.41N., R.25E., M.D.M.

RHT