

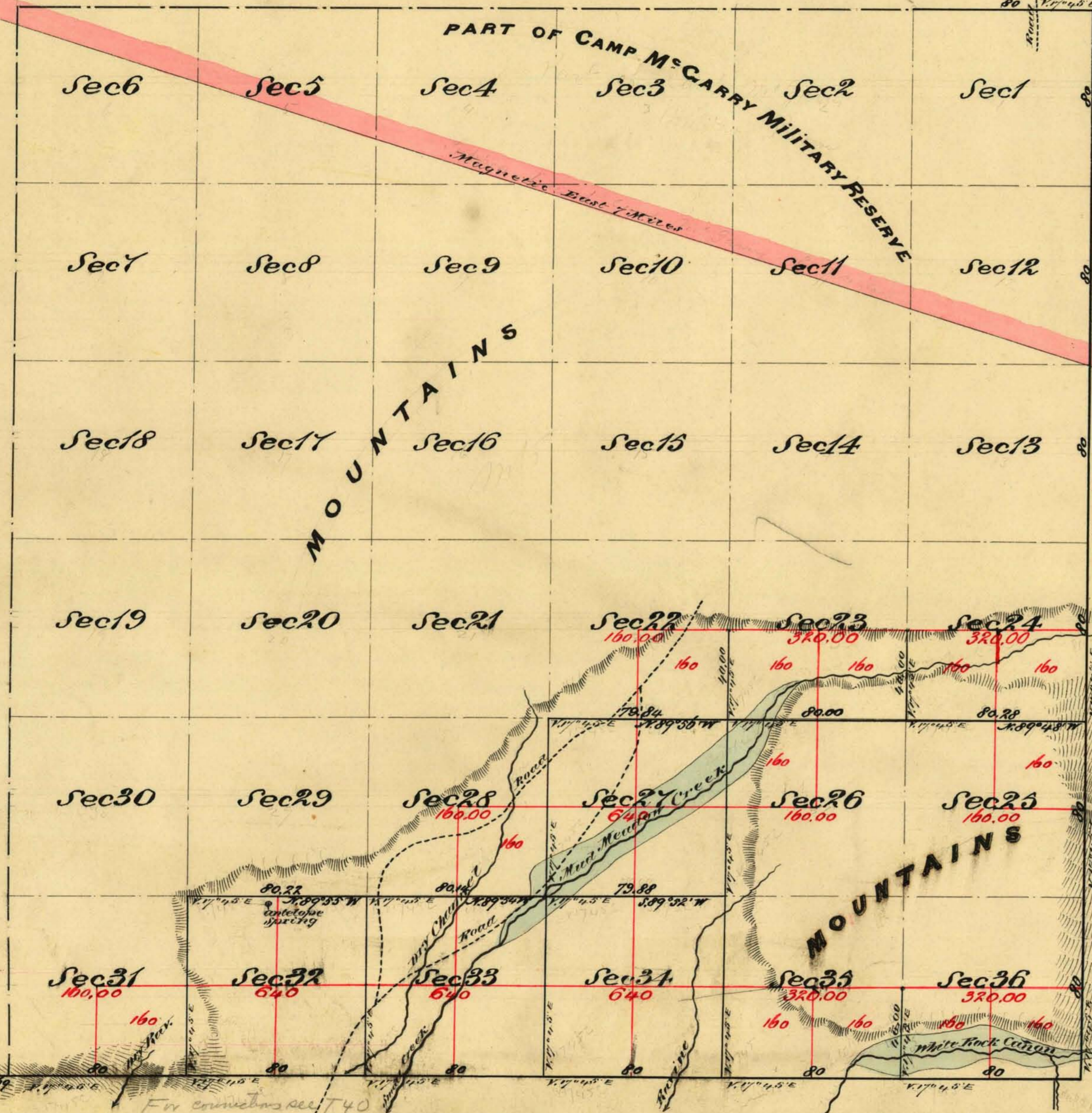
Township N^o 41 North

Range N^o 25 East

Mount Diablo Meridian

3rd IR established in 1915

Sub. Cont 59.



Aggregate Area of Public Land (Surveyed) 24,640.00 Acres
 Estimated " " Mountains Reserve (unsurveyed) 18,400.00 "
 Aggregate 23,040.00 "

Note
 The line shown on this Plat as one of the boundaries of Camp McGarry Military Reserve as run by the Military Authorities and is here shown as an Exhibit only

Commenced February 4th 1873
 Completed " 5th

Surveys Designated	By Whom Surveyed	Date of Contract	Am't of Survey	When Surveyed	Acres
Township Lines	S. W. Garside	December 7 th 1872	13 00 00	1872	55
Subdivision "	" "	" " "	13 40 36	February 1873	"

The above Map of Township N^o 41 North Range N^o 25 East Mount Diablo Meridian is strictly conformable to the field notes of the Surveys thereof on file in this Office which have been examined and approved
 U. S. Surveyor General's Office
 Virginia City, Nevada
 April 17th 1873

0516

E. S. Davis
U. S. Surveyor Gen'l Nevada

T41N, R25E. V.D.