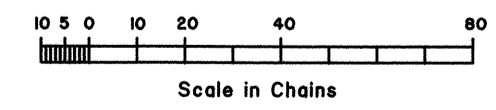
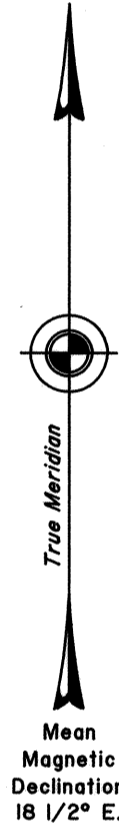
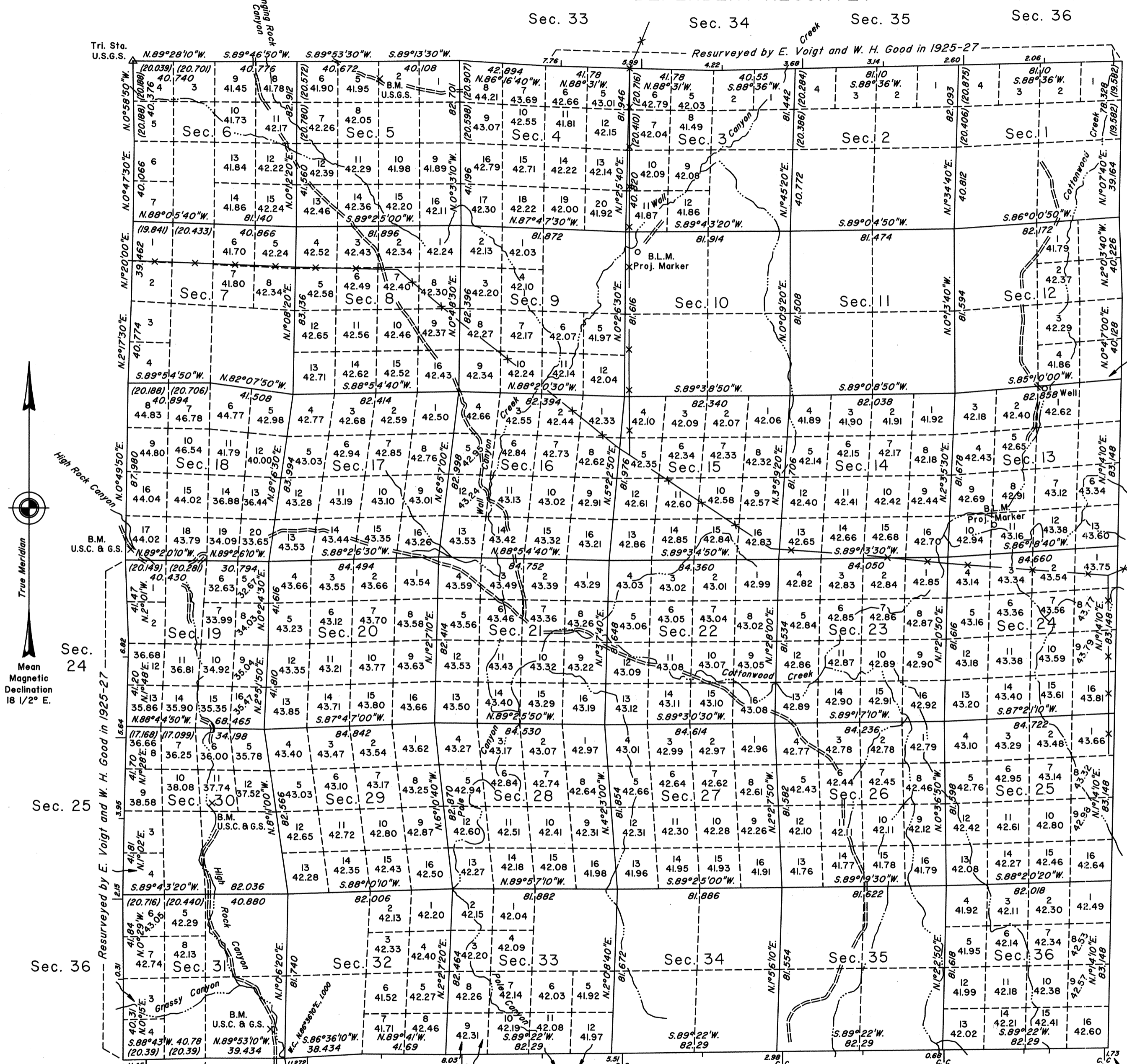


# TOWNSHIP 41 NORTH, RANGE 23 EAST, OF THE MOUNT DIABLO MERIDIAN, NEVADA

## DEPENDENT RESURVEY



A history of surveys is contained in the field notes.

This plat represents the dependent resurvey of the Eighth Standard Parallel North, through a portion of Range 23 East, the east boundary, portions of the west and north boundaries, and the subdivision lines of Township 41 North, Range 23 East, Mount Diablo Meridian, Nevada, designed to restore the corners in their true original locations according to the best available evidence.

Except as indicated hereon, the lottings and areas are as shown on the plats approved March 25, 1874 and April 5, 1877.

Survey executed by Ronald E. Williams and Brock R. Clifford, Cadastral Surveyors, beginning September 8, 1989, and completed October 22, 1997, pursuant to Special Instructions dated September 6, 1989, for Group No. 680, Nevada.

UNITED STATES DEPARTMENT OF THE INTERIOR  
BUREAU OF LAND MANAGEMENT

Reno, Nevada July 14, 1998

This plat is strictly conformable to the approved field notes, and the survey, having been correctly executed in accordance with the requirements of law and the regulations of this Bureau, is hereby accepted.

For the Director

*Robert H. Thompson*

Acting Chief Cadastral Surveyor, Nevada

Latitude 41°24'52.383"N.  
Longitude 119°19'24.443"W.  
NAD 83