

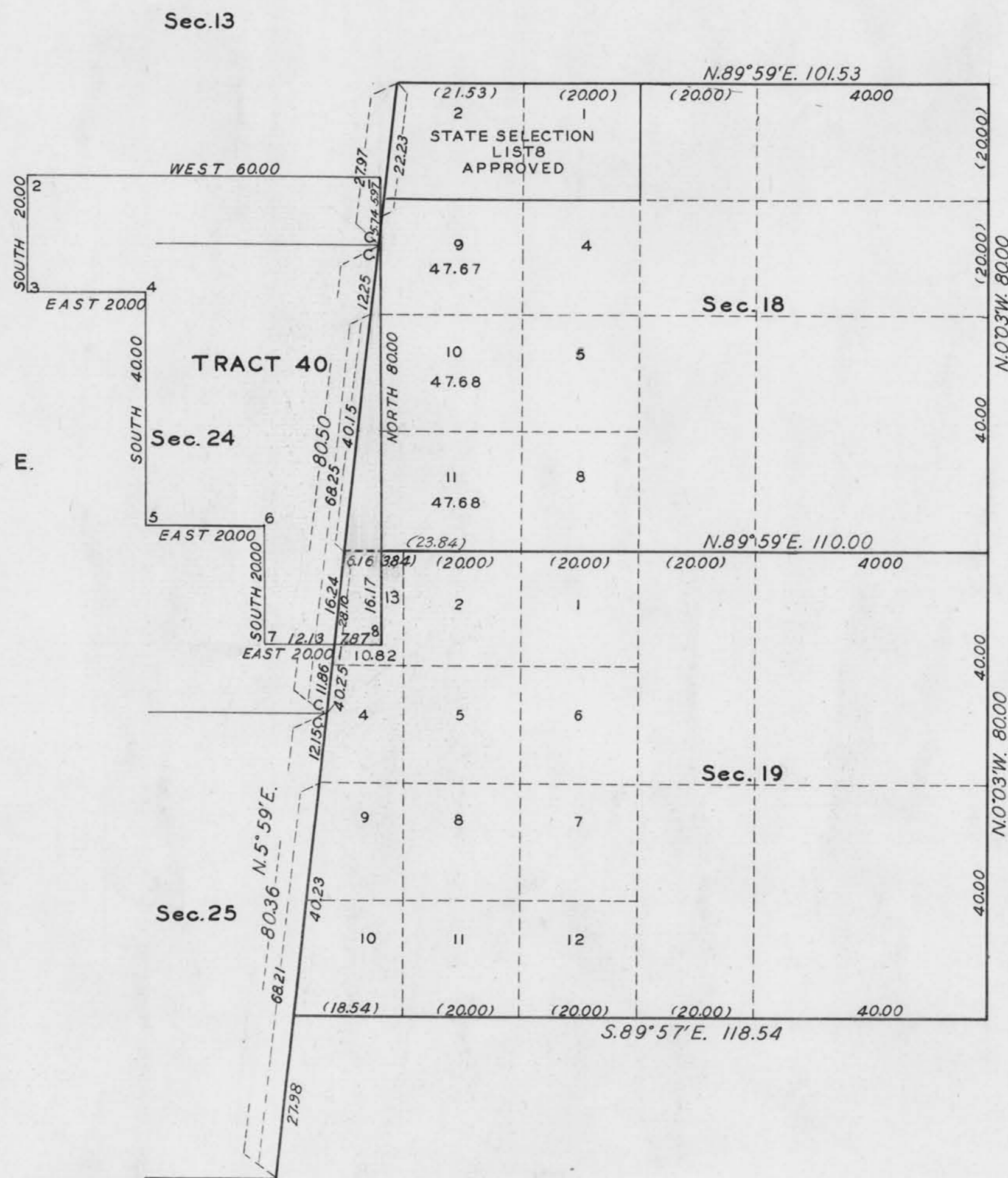
TOWNSHIP N°41 NORTH, RANGE N°22 EAST OF THE MOUNT DIABLO MERIDIAN, NEVADA.

SUPPLEMENTAL PLAT OF SECS. 18 AND 19.

SCALE: 20 CHAINS TO AN INCH.



T. 41 N., R. 21 E.



INDEX TO SEGREGATED TRACT & APPROPRIATED SUBDIVISIONS.

No.	TRACT	ENTRY & STATUS	ORIGINAL SURVEY				RESURVEY			
			TP	RG.	SEC.	SUBDIVISION	TP	RG.	SEC.	SUBDIVISION
40	Homestead Entry 01862 Wm. L. Page (PATENTED)	41	21	14	SE <sup>4</sup> SE <sup>4</sup>					
		41	21	13	S <sup>2</sup> SW <sup>4</sup>					
		41	21	24	NW <sup>4</sup> & NE <sup>4</sup> SW <sup>4</sup>					
	State Selection List B Approved	41	21	13	N <sup>2</sup> SE <sup>4</sup>	41	22	18	Lots 1 and 2.	

Public Survey Office,  
Reno, Nevada, June 15, 1934.  
The above supplemental plat of sections 18 and 19, Township 41 North, Range 22 East, of the Mount Diablo Meridian, Nevada, based upon the plat approved November 2, 1929 showing relotting of original lots 3, 6 and 7, Section 18, and lot 3, Section 19, to accommodate homestead entry 01862, (Tract 40), prepared in accordance with instructions contained in the Commissioner's letter 1310410 "E," dated January 24, 1934, is hereby approved.

Alfred R. Sadler  
Acting Office Cadastral Engineer.

DEPARTMENT OF THE INTERIOR  
GENERAL LAND OFFICE

Washington, D.C., August 17, 1934.  
The amended lottings represented by this supplemental plat having been correctly made in accordance with the regulations of this office, the plat is hereby accepted.

Outtriette Fulk  
Assistant Commissioner.