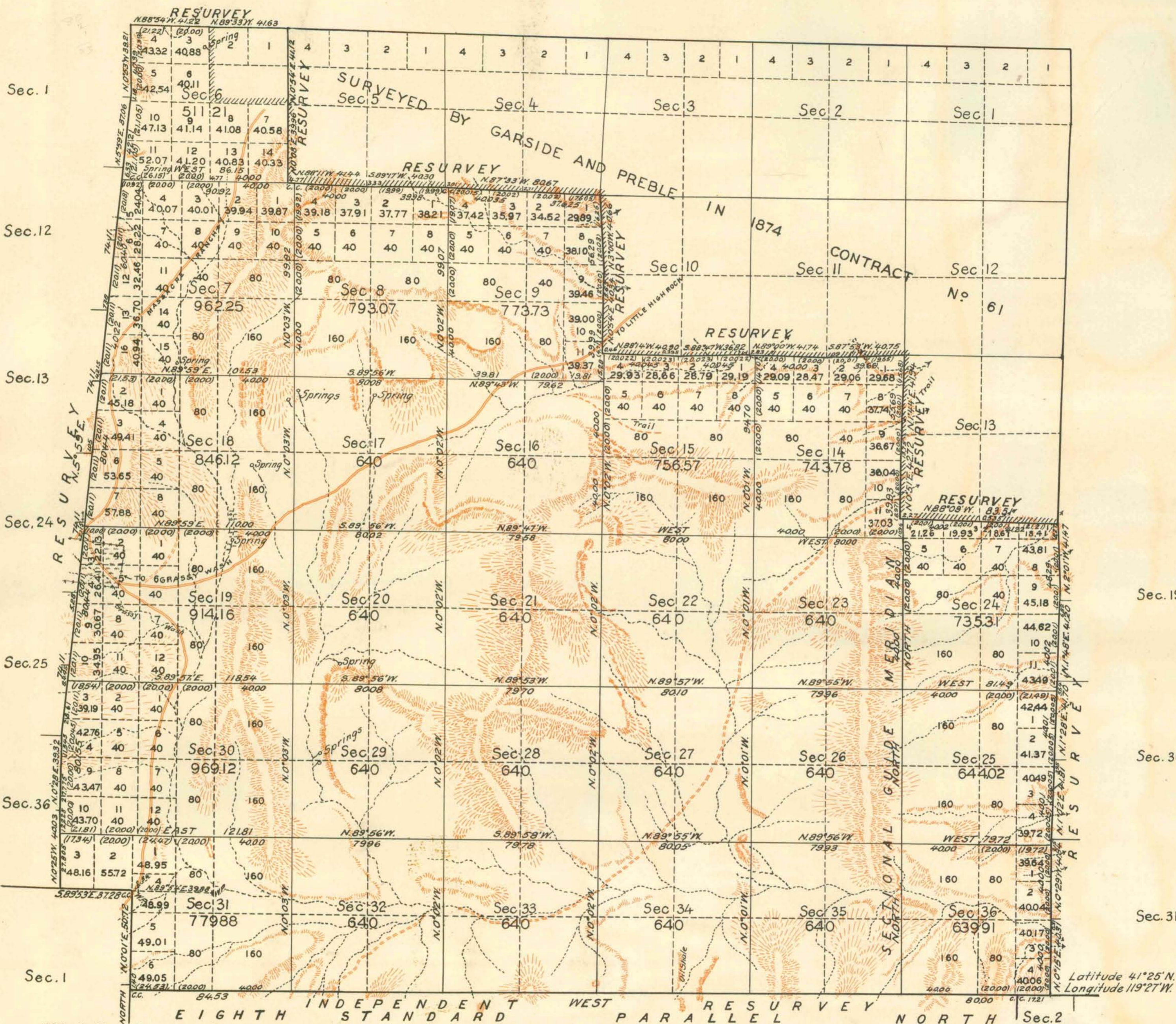


TOWNSHIP N^o 41 NORTH RANGE N^o 22 EAST MOUNT DIABLO MERIDIAN NEVADA



Scale: 40 Chains to an Inch. Area Surveyed, 19029.13 Acres.

LINES DESIGNATED BY WHOM SURVEYED		GROUP NO	DATE	MILEAGE MLS.	CHS.	WHEN SURVEYED	
						BEGUN	COMPLETED
Exterior	VOIGT AND GOOD	122	AUG. 26, 1924	16	77.17	JUNE 6, 1925	JUNE 21, 1927
Subdivisional	" " "	"	" " "	52	70.90	JULY 10, 1925	JUNE 22, 1927
Meander	" " "	"	" " "				
Miscellaneous	" " "	"	" " "				

Office of U.S. Supervisor of Surveys
 Denver, Colorado, Nov. 2, 1929
 The above plat of Township No. 41 North Range No. 22 East of the Mount Diablo Meridian, Nevada is strictly conformable to the field notes of the survey thereof which have been examined and approved.

Wm. H. Johnson
 U.S. Supervisor of Surveys.

DEPARTMENT OF THE INTERIOR
 GENERAL LAND OFFICE
 Washington, D.C., Nov. 16, 1929.
 The survey represented by this plat having been correctly executed in accordance with the requirements of law and the regulations of this office, is hereby accepted.

Wm. C. Howell
 Assistant Commissioner.