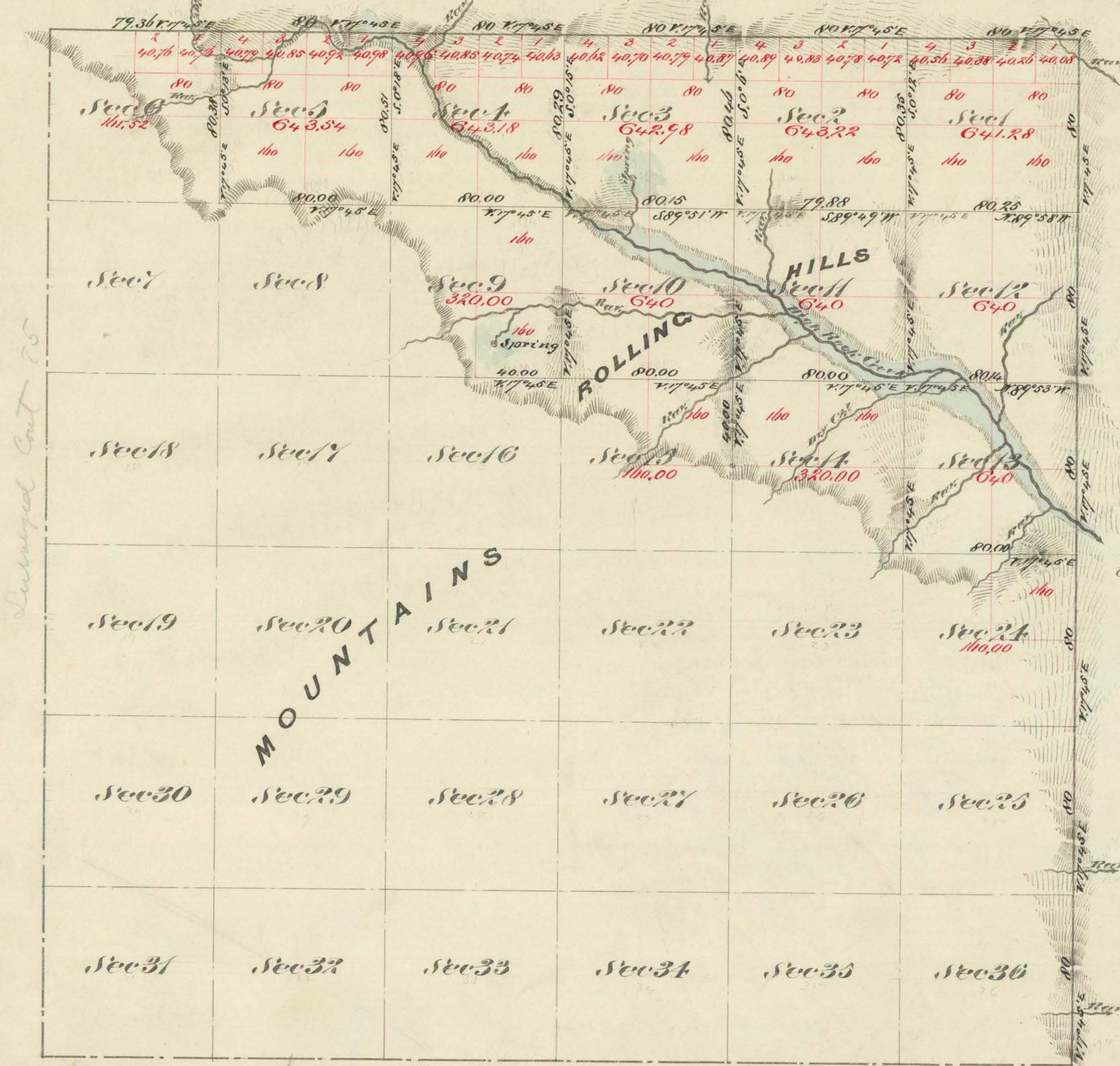


Township N° 4 North

Range N° 22 East

Mount Diablo Meridian



Aggregate Area of Public Land (Surveyed) 4,595.72 Acres
 Estimated " " Mountains (unsurveyed) 15,157.74 "
 Aggregate 22,062.46 "

Commenced January 10th 1874
 Completed January 13th "

Surveys Designated	By Whom Surveyed	Date of Commencement	Acres of Survey	When Surveyed
Township Lines	G. W. Jarvis & H. S. Peck	Nov ^r 18 th 1873	11 79 36	1874
Subdivision Lines	" " " "	" " "	29 02 48	January 1874

N° Cont
 61
 61

The above Map of Township N° 4 North Range N° 22 East Mount Diablo Meridian is strictly conformable to the field notes of the surveys then of use in this Office, which have been examined and approved
 U.S. Surveyor General's Office
 Virginia City Nevada
 March 25th 1874

E. S. Davis
 U.S. Surveyor Gen'l. Sen.

0328

T41N. R22E