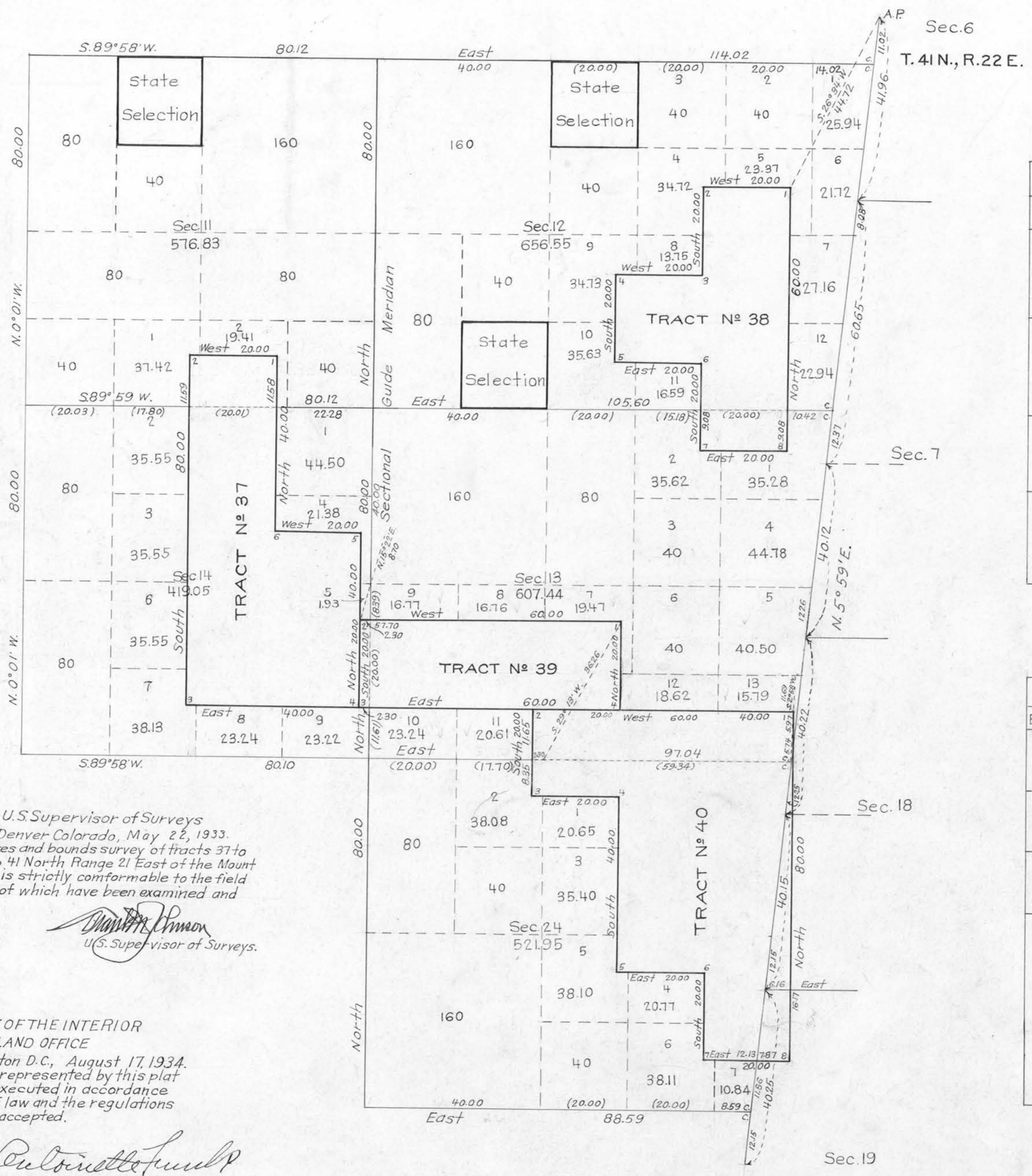


# INDEPENDENT RESURVEY WITH TRACT SEGREGATIONS TOWNSHIP N°41 NORTH RANGE N°21 EAST OF THE MOUNT DIABLO MERIDIAN, NEVADA

Two Sheets  
SHEET N°2



Scale: 20 Chains to 1 Inch



Index to Segregated Tracts

No	Tract	Original Survey			
		Entry and Status	Tp.	Rg.	Sec. Subdivision
37	Desert Entry 04175 Mary Page Patented	41	21	10	S.E.1/4 S.E.1/4 E.1/2 N.E.1/4; N.E.1/4 S.E.1/4 S.W.1/4 N.W.1/4; N.W.1/4 S.W.1/4
38	Homestead Entry 015354 Ralph Grandin Hunt Pending	41	21	12	W.1/2 N.E.1/4; W.1/2 S.E.1/4; S.E.1/4 N.W.1/4
39	Desert Entry 020 Wm. L. Page Patented	41	21	14	N.1/2 S.E.1/4; N.E.1/4 S.W.1/4
40	Homestead Entry 01862 Wm. L. Page Patented	41	21	14	S.E.1/4 S.E.1/4 S.1/2 S.W.1/4 N.W.1/4; N.E.1/4 S.W.1/4

Index to Appropriated Subdivisions

Tract	Entry & Status	Original Survey				Resurvey			
		Tp.	Rg.	Sec.	Subdivn.	Tp.	Rg.	Sec.	Subdivn.
State Sel. List 25 Approved	41	21	2	SE 1/4 SW 1/4	41	21	1	SW 1/4 SW 1/4	
State Sel. List 10 Approved	41	21	3	SW 1/4 SE 1/4	41	21	2	SE 1/4 SW 1/4	
State Sel. List 10 Approved	41	21	11	NE 1/4 NE 1/4	41	21	12	NW 1/4 NE 1/4	
State Sel. List 24 Approved	41	21	10	NW 1/4 NE 1/4	41	21	11	NE 1/4 NW 1/4	
State Sel. List 8 Approved	41	21	11	SW 1/4 SE 1/4	41	21	12	SE 1/4 SW 1/4	
State Sel. List 8 Approved	41	21	9	E 1/2 SW 1/4	41	21	9	E 1/2 S.W. 1/4	
	41	21	16	SE 1/4 NW 1/4	41	21	16	SE 1/4 N.W. 1/4	
	41	21	13	N 1/2 S.E. 1/4	41	22	18	Lots 1 & 2	
	41	21	21	SE 1/4 SW 1/4	41	21	21	SE 1/4 S.W. 1/4	
	41	21	23	SE 1/4 SW 1/4	41	21	23	SE 1/4 S.W. 1/4	
	41	21	23	SW 1/4 SE 1/4	41	21	23	SW 1/4 S.E. 1/4	
	41	21	25	N 1/2 N.W. 1/4	41	21	25	N 1/2 N.W. 1/4	
	41	21	25	S 1/2 N.E. 1/4	41	21	25	S 1/2 N.E. 1/4	
	41	21	26	NE 1/4 NE 1/4	41	21	26	NE 1/4 N.E. 1/4	
	41	21	28	SW 1/4 SE 1/4	41	21	28	SW 1/4 S.E. 1/4	
	41	21	33	NE 1/4 NE 1/4	41	21	33	NE 1/4 N.E. 1/4	

Office of U.S. Supervisor of Surveys  
Denver Colorado, May 22, 1933.  
The above plat of metes and bounds survey of tracts 37 to 40 inclusive in Township 41 North Range 21 East of the Mount Diablo Meridian, Nevada is strictly conformable to the field notes of the survey thereof which have been examined and approved.

*Wm. L. Page*  
U.S. Supervisor of Surveys.

DEPARTMENT OF THE INTERIOR  
GENERAL LAND OFFICE  
Washington D.C., August 17, 1934.  
The survey represented by this plat having been correctly executed in accordance with the requirements of law and the regulations of this office, is hereby accepted.

*Carl Vinson*  
Assistant Commissioner.