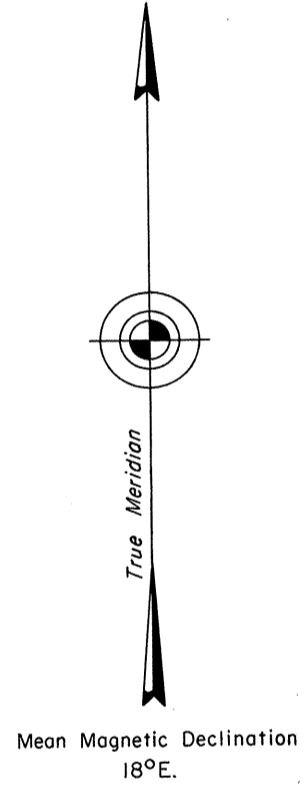
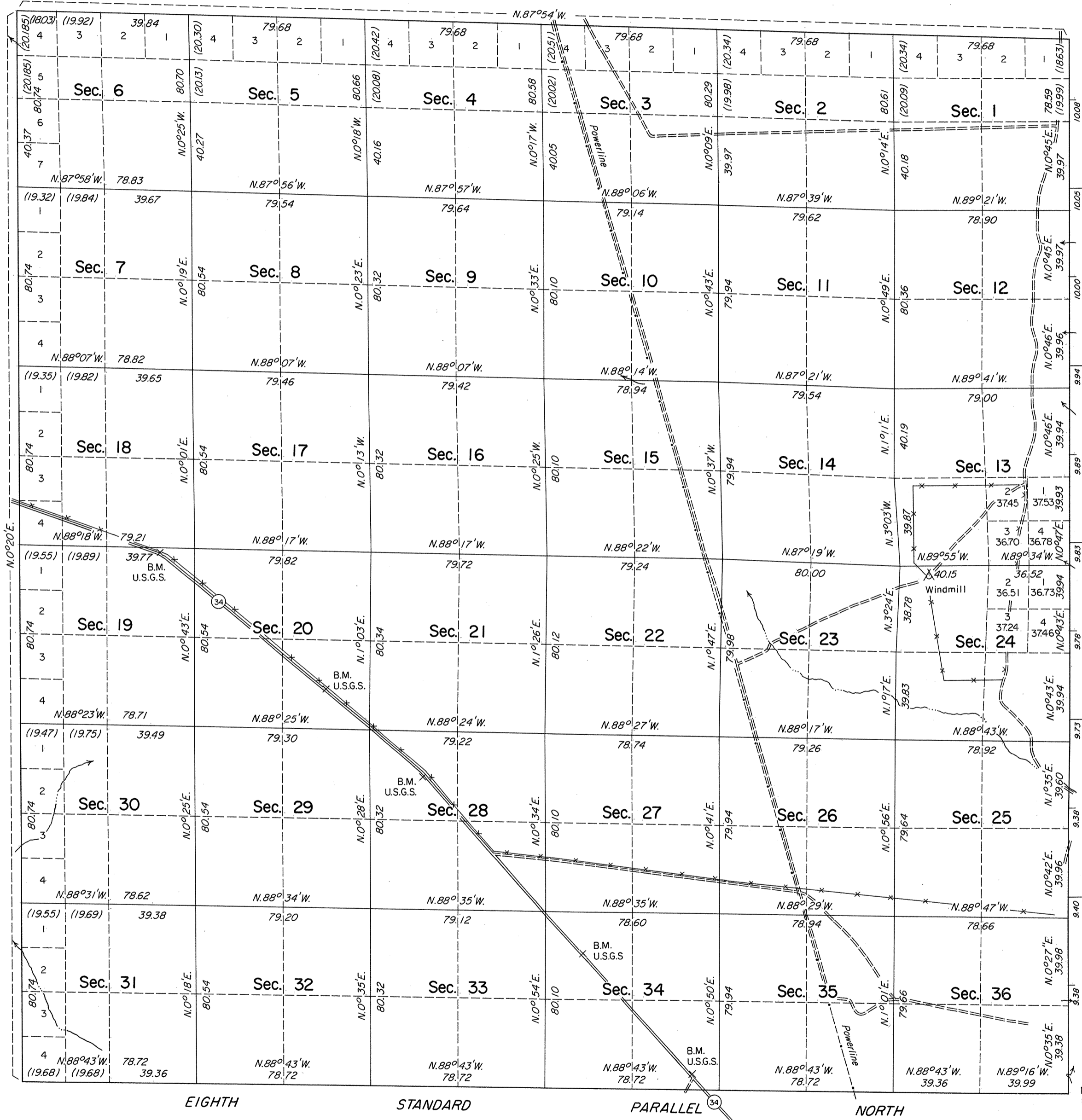


TOWNSHIP 41 NORTH, RANGE 20 EAST, OF THE MOUNT DIABLO MERIDIAN, NEVADA

DEPENDENT RESURVEY



Sec. 6

Sec. 7

Sec. 18

Sec. 19

Sec. 30

Sec. 31

Resurveyed by C. S. Swantholm and R. C. Yundt in 1932

History of the earlier surveys is contained in the field notes.

A dependent resurvey of the west and north boundaries was executed concurrently under T. 41 N., R. 19 E., and T. 42 N., R. 20 E., respectively, of this same group.

This plat represents a dependent resurvey of the Eighth Standard Parallel North, through R. 20 E., and the subdivisional lines of T. 41 N., R. 20 E., designed to restore the corners in their original locations according to the best available evidence.

Lottings and areas, except as shown hereon, are as shown on the plat approved January 22, 1879.

Survey executed by Ronald K. Baugh, and Ronald E. Williams, Cadastral Surveyors, August 13, 1980, to October 1, 1981, under Special Instructions dated July 10, 1980, for Group No. 487, Nevada.

NOTE:
Group No. "487" should be Group No. "587" per memorandum dated October 27, 1982, File 9622 (N-942), Group No. 587, Nevada.

UNITED STATES DEPARTMENT OF THE INTERIOR
BUREAU OF LAND MANAGEMENT
Reno, Nevada July 21, 1982
This plat is strictly conformable to the approved field notes, and the survey having been correctly executed in accordance with the requirements of law and the regulations of this Bureau, is hereby accepted.

For the Director
Lael E. Bland
Chief Cadastral Surveyor

Latitude 41°25'17.4"N.
Longitude 119°40'44.4"W.

