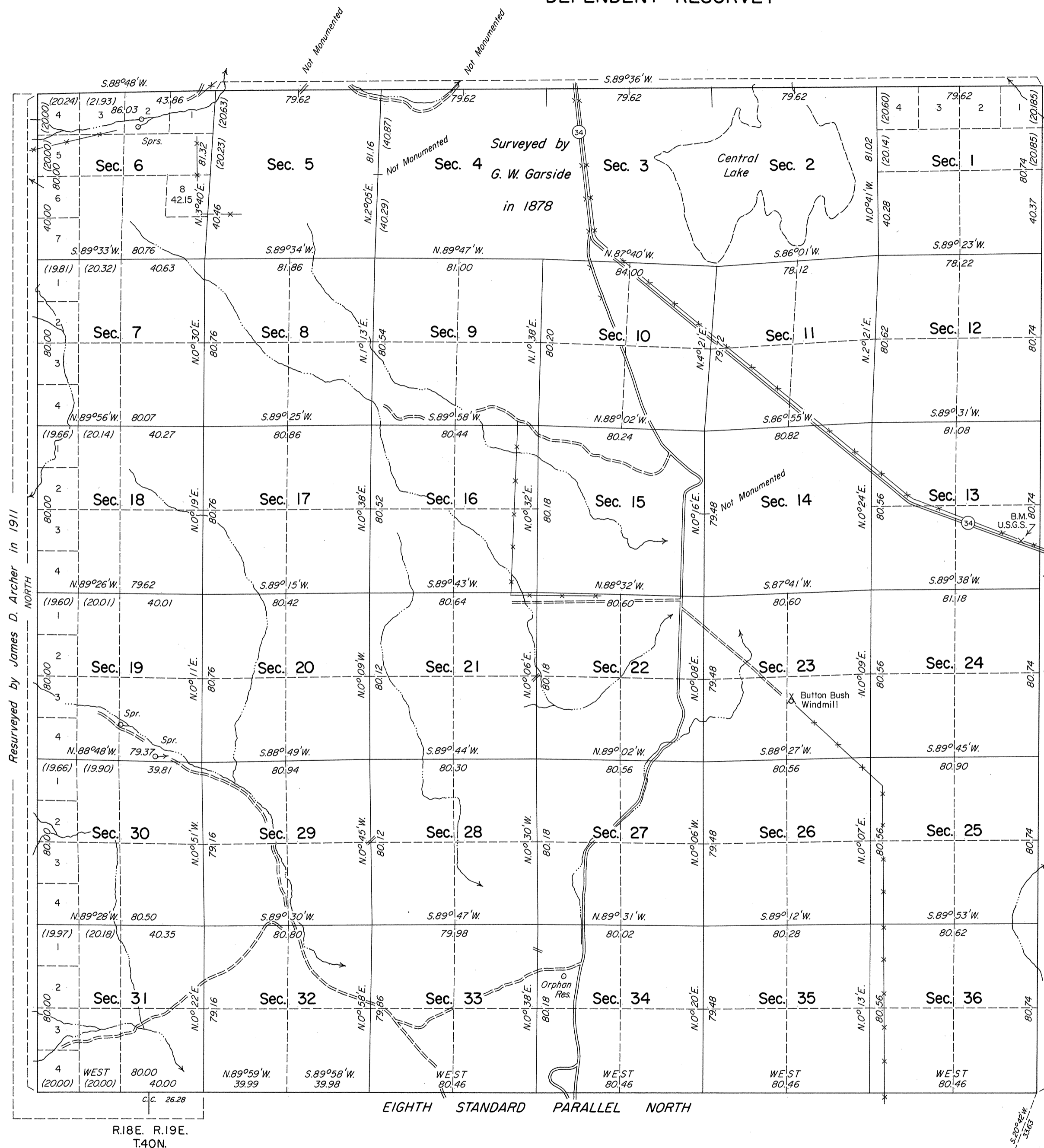


TOWNSHIP 41 NORTH, RANGE 19 EAST, OF THE MOUNT DIABLO MERIDIAN, NEVADA

DEPENDENT RESURVEY



History of the earlier surveys is contained in the field notes.

A dependent resurvey of the north boundary was executed concurrently under T. 42 N., R. 19 E., of this same group.

This plat represents a dependent resurvey of the Eighth Standard Parallel North, through a portion of R. 19 E., and the east boundary and a portion of the subdivisional lines of T. 41 N., R. 19 E., designed to restore the corners in their original locations according to the best available evidence.

Lottings and areas, except as shown hereon, are as shown on the plat approved January 22, 1879.

Survey executed by Ronald K. Baugh, Cadastral Surveyor, September 10 to November 3, 1980, under Special Instructions dated July 10, 1980, for Group No. 587.

UNITED STATES DEPARTMENT OF THE INTERIOR
BUREAU OF LAND MANAGEMENT

Reno, Nevada July 21, 1982

This plat is strictly conformable to the approved field notes, and the survey having been correctly executed in accordance with the requirements of law and the regulations of this Bureau, is hereby accepted.

For the Director

Lael E. Bland

Chief Cadastral Surveyor

Latitude 41°25'24.0"N.
Longitude 119°47'33.9"W.

BOULDER
U.S.G.S.

