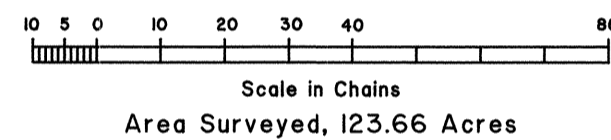
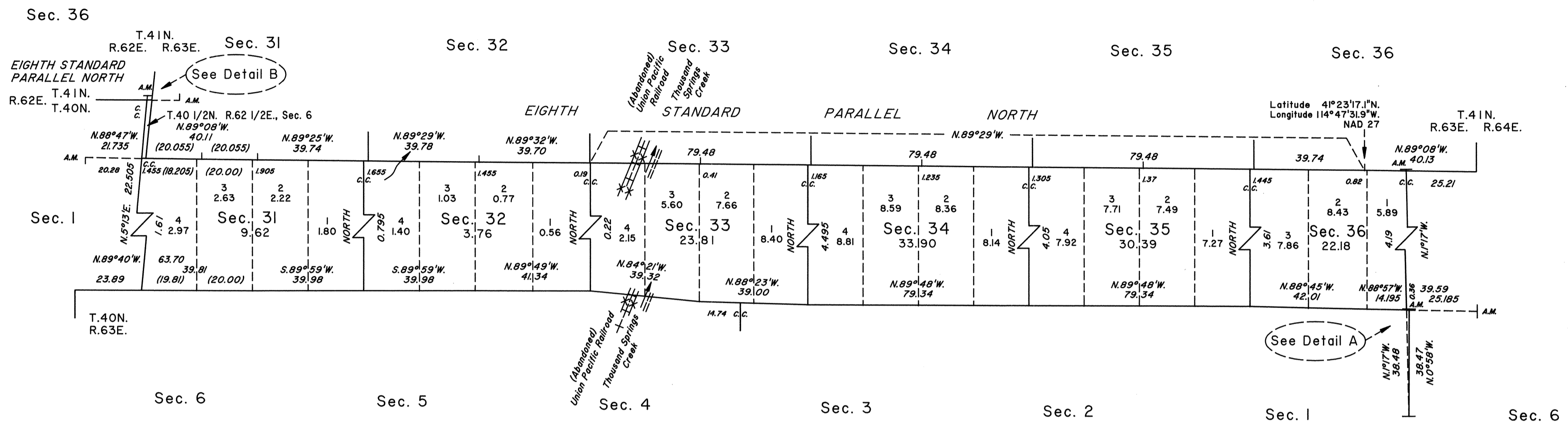


TOWNSHIP 40 1/2 NORTH, RANGE 63 EAST, OF THE MOUNT DIABLO MERIDIAN, NEVADA

DEPENDENT RESURVEY AND SURVEY



A history of surveys is contained in the field notes.

The Eighth Standard Parallel North, through a portion of Ranges 62 and 63 East, and a portion of the north boundary and the east boundary of Township 40 North, Range 63 East, and a portion of the west boundary of Township 40 North, Range 64 East, were dependently resurveyed concurrently under this same Group.

This plat represents the dependent resurvey of the Eighth Standard Parallel North, through a portion of Ranges 62 and 63 East; and the dependent resurvey of a portion of the north boundary of Township 40 North, Range 63 East; and the dependent resurvey of a portion of the east boundary of Township 40 North, Range 62 East, designed to restore the corners in their true original locations according to the best available evidence, and the survey of the subdivision lines of Township 40 1/2 North, Range 63 East, Mount Diablo Meridian, Nevada.

Survey executed by Ronald E. Williams, Cadastral Surveyor, beginning July 17, 1990, and completed October 7, 1995, pursuant to Special Instructions dated May 18, 1989, and Supplemental Special Instructions dated July 25, 1990, for Group No. 676, Nevada.

UNITED STATES DEPARTMENT OF THE INTERIOR
BUREAU OF LAND MANAGEMENT

Reno, Nevada June 18, 1996

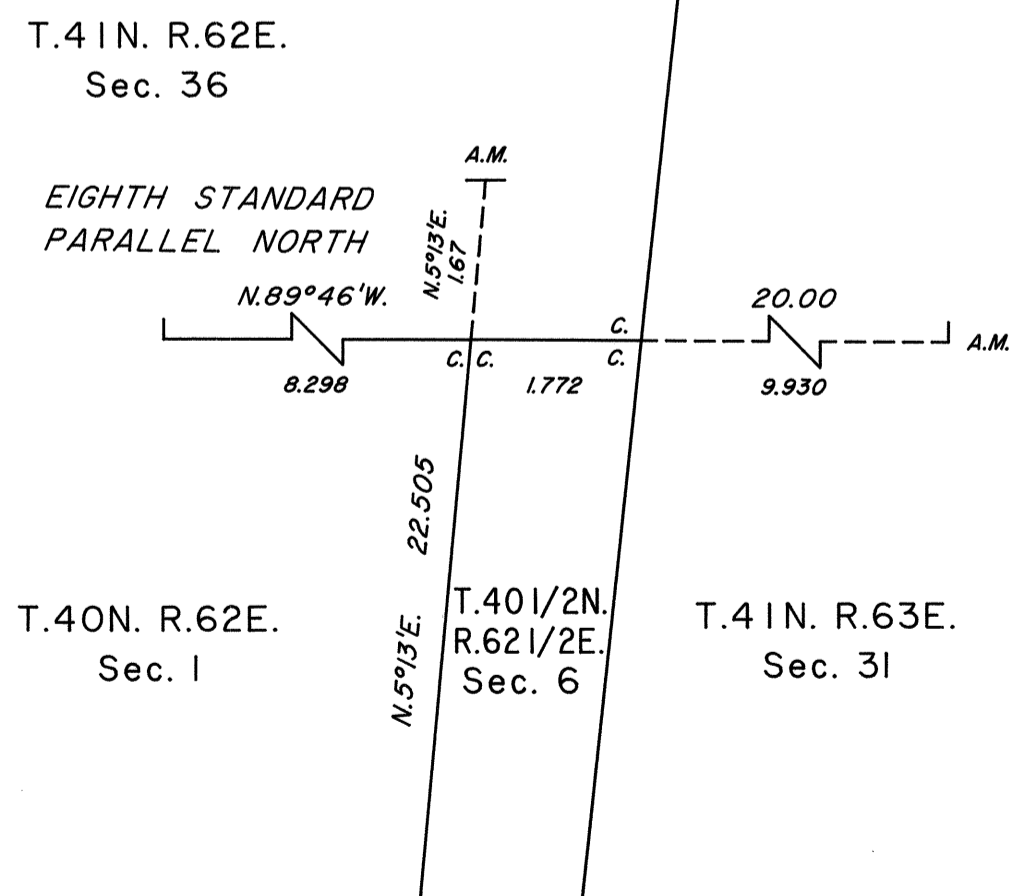
This plat is strictly conformable to the approved field notes, and the survey, having been correctly executed in accordance with the requirements of law and the regulations of this Bureau, is hereby accepted.

For the Director

Robert H. Thompson

Acting Chief Cadastral Surveyor, Nevada

DETAIL B
Not to Scale



DETAIL A
Not to Scale

