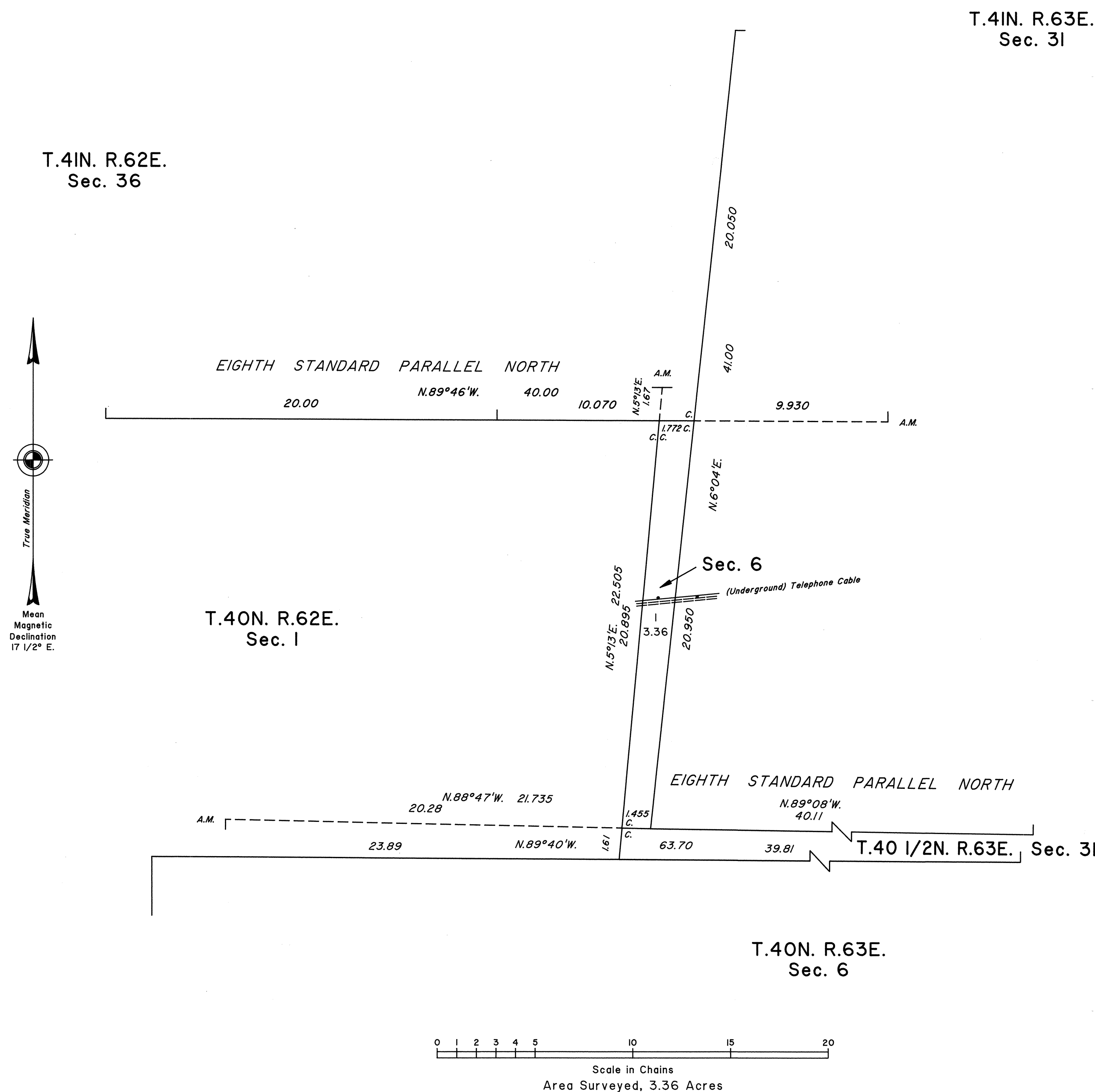


TOWNSHIP 40 1/2 NORTH, RANGE 62 1/2 EAST, OF THE MOUNT DIABLO MERIDIAN, NEVADA



This plat comprises the boundaries of Township 40 1/2 North, Range 62 1/2 East, Mount Diablo Meridian, Nevada.

These boundaries are described in the approved field notes of Township 41 North, Range 62 East; Township 41 North, Range 63 East; and Township 40 1/2 North, Range 63 East, pursuant to Special Instructions dated May 18, 1989, and Supplemental Special Instructions dated July 25, 1990, for Group No. 676, Nevada.

UNITED STATES DEPARTMENT OF THE INTERIOR
BUREAU OF LAND MANAGEMENT

Reno, Nevada June 18, 1996

This plat of Township 40 1/2 North, Range 62 1/2 East, of the Mount Diablo Meridian, Nevada, is strictly conformable to the approved field notes, and having been correctly prepared in accordance with the regulations of this Bureau, is hereby accepted.

For the Director

Robert H. Thompson

Acting Chief Cadastral Surveyor, Nevada

T.40 1/2N., R.62 1/2E., M.D.M.