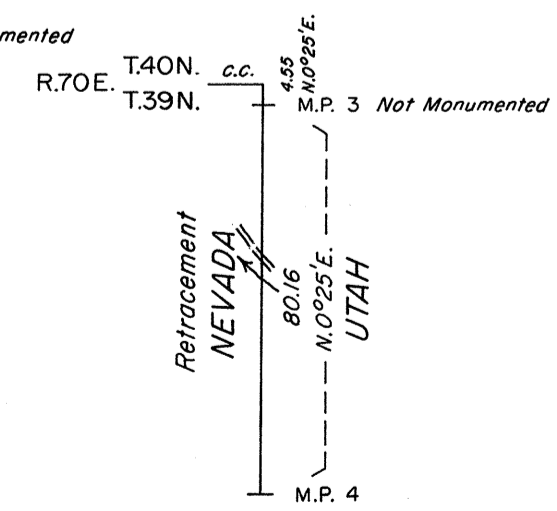
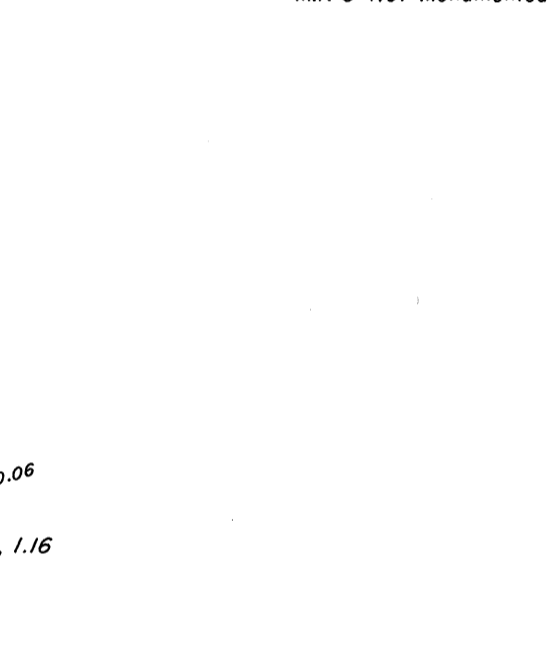
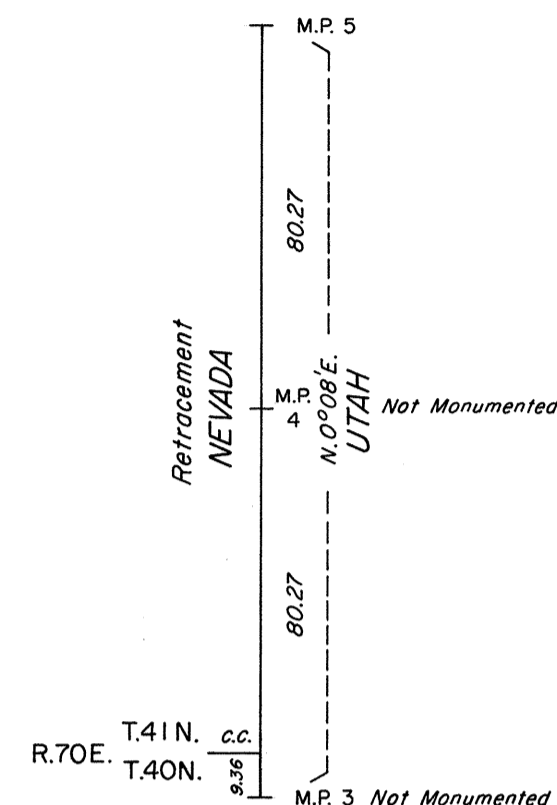
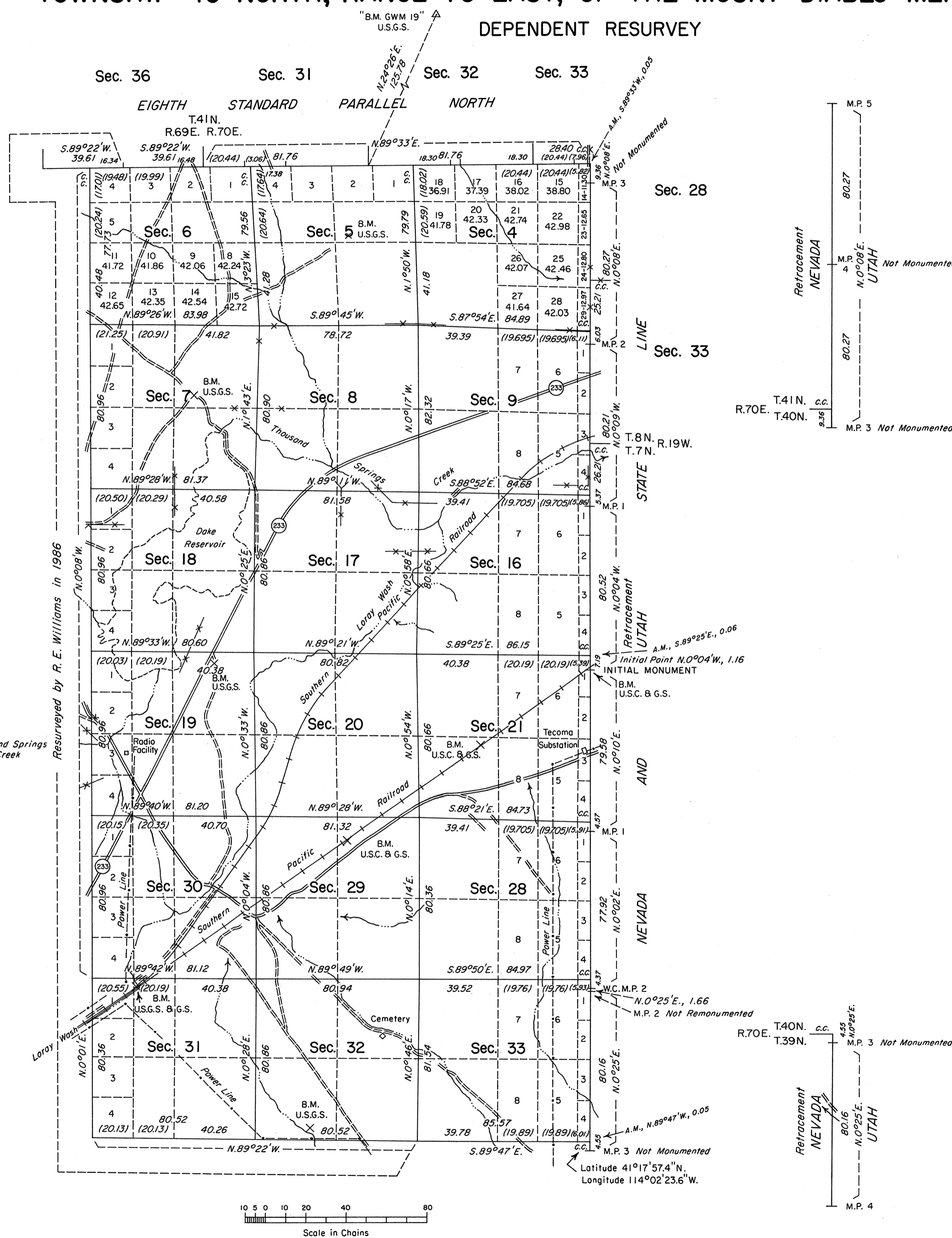
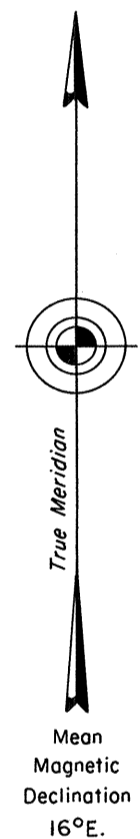


ORIGINAL

TOWNSHIP 40 NORTH, RANGE 70 EAST, OF THE MOUNT DIABLO MERIDIAN, NEVADA

DEPENDENT RESURVEY



History of the earlier surveys is contained in the field notes.

This plat represents a retracement of the Nevada-Utah State Line between Mile Post No. 4 south and Mile Post No. 5 north and the dependent resurvey of the Eighth Standard Parallel North, through R. 70 E., and a portion of R. 69 E., a portion of the south boundary and the subdivisional lines of T. 40 N., R. 70 E., designed to restore the corners in their true original locations according to the best available evidence.

Except as shown hereon, the lottings and areas are as shown on the plat approved July 16, 1881.

Survey executed by Robert A. Pratt, Cadastral Surveyor, beginning June 22, 1987 and completed July 14, 1987, under Special Instructions dated June 15, 1987, for Group No. 649, Nevada.

UNITED STATES DEPARTMENT OF THE INTERIOR
BUREAU OF LAND MANAGEMENT

Reno, Nevada May 23, 1988

This plat is strictly conformable to the approved field notes, and the survey, having been correctly executed in accordance with the requirements of law and the regulations of this Bureau, is hereby accepted.

For the Director

Lacel E. Bland

Chief Cadastral Surveyor

T.40N., R.70E., M.D.M.