

ORIGINAL

TOWNSHIP 40 NORTH, RANGE 70 EAST, OF THE MOUNT DIABLO MERIDIAN, NEVADA

DEPENDENT RESURVEY

Surveyed by

J. C. Smyles and C. S. Preble

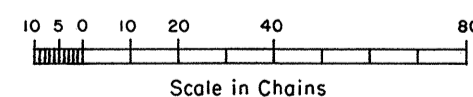
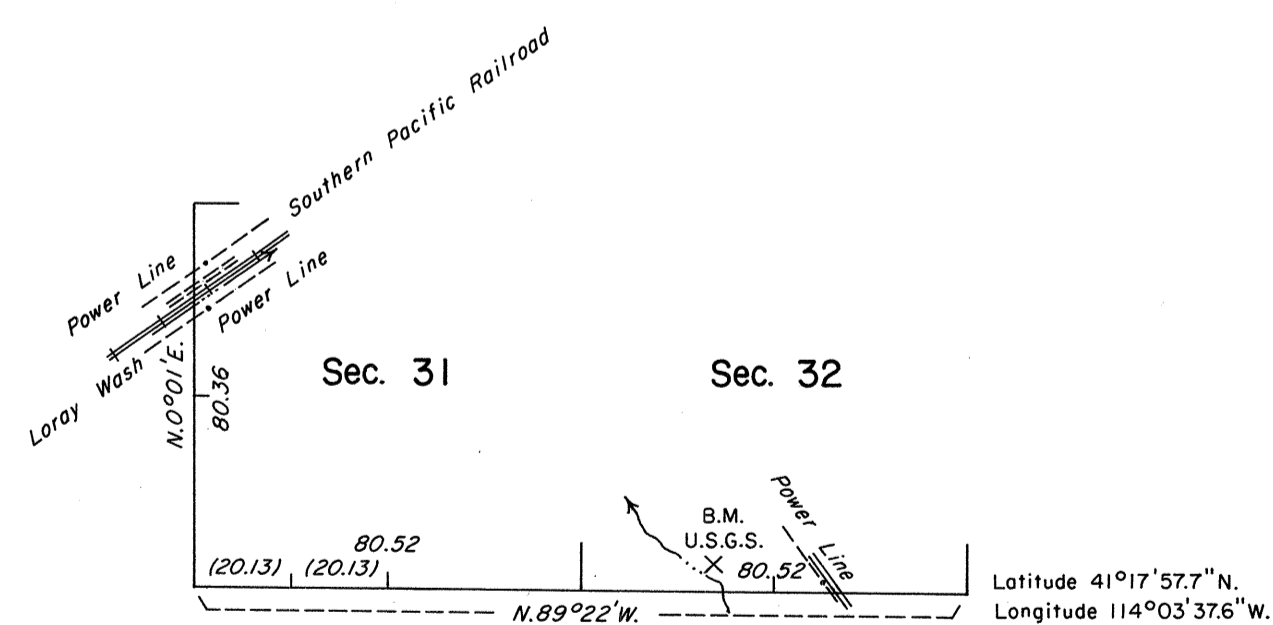
in 1881



History of the earlier surveys is contained in the field notes.

This plat represents the dependent resurvey of portions of the south and west boundaries of T. 40 N., R. 70 E., designed to restore the corners in their true original locations according to the best available evidence.

Survey executed by Ronald E. Williams, Cadastral Surveyor, beginning August 12, 1986 and completed October 3, 1986, under Special Instructions dated August 1, 1986, for Group No. 637, Nevada.



UNITED STATES DEPARTMENT OF THE INTERIOR
BUREAU OF LAND MANAGEMENT

Reno, Nevada April 13, 1988

This plat is strictly conformable to the approved field notes, and the survey, having been correctly executed in accordance with the requirements of law and the regulations of this Bureau, is hereby accepted.

For the Director

Lacel E. Bland

Chief Cadastral Surveyor