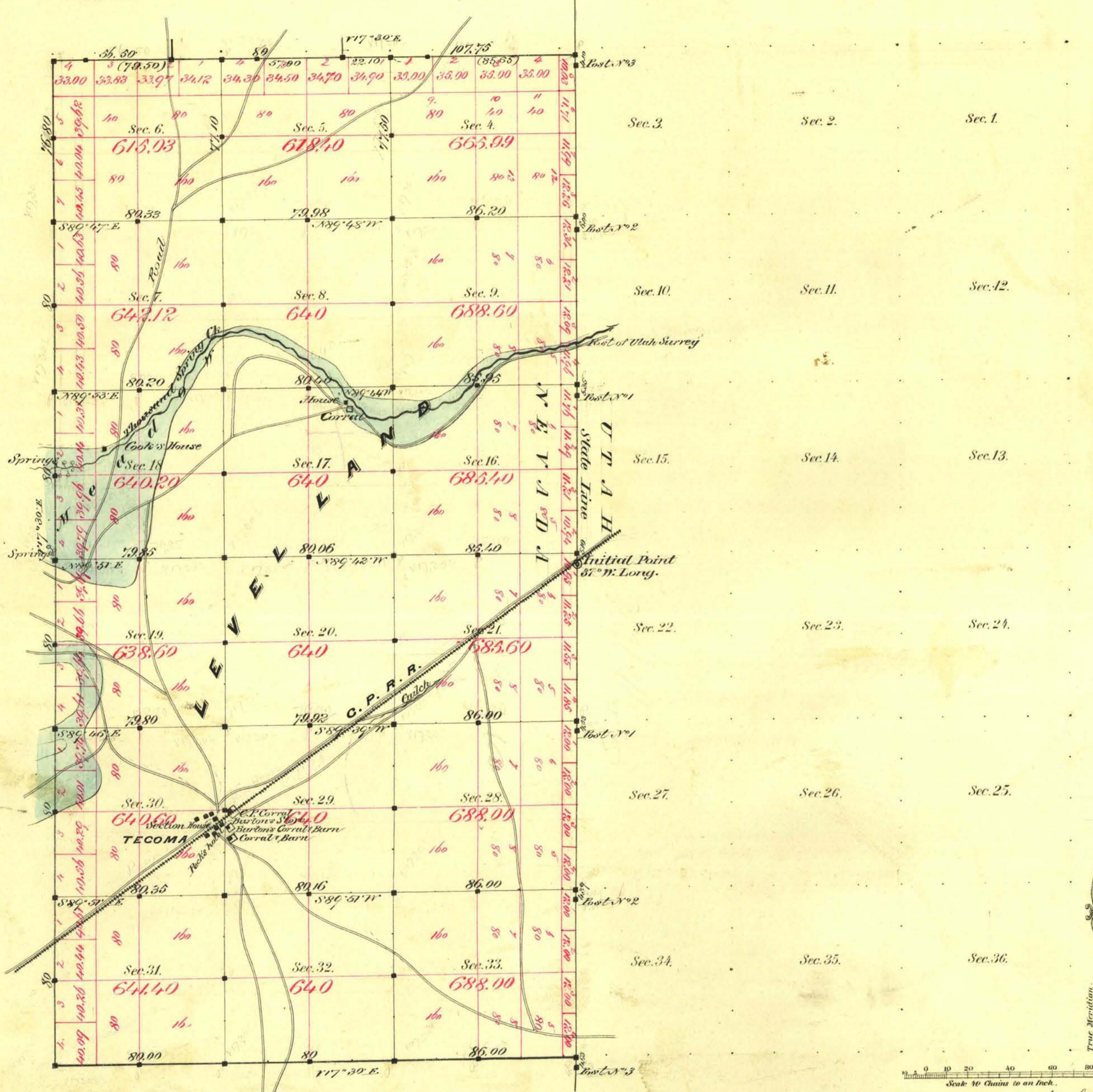


TOWNSHIP N^o 40 NORTH RANGE N^o 70 EAST MOUNT DIABLO MERIDIAN



Aggregate area of Public Land Damaged 11,37.94 Ac.

Commenced June 10th 1881
Completed " 13th "

Subdivisions run with a Variation of 1^o 30' East

Surveys Designated	By Whom Surveyed	Date of Contract	Amount of Surveys	When Surveyed
C. by St. Line	D. O. James	Aug. 11 th 1870	M. ch. 162	1870
A. N. by St. Line	Samuel P. Clark	April 1 st 1881	12-07-08	1881
Subdivisions of	"	"	27-28-20	June
Comm. on St. Line	"	"	25-37	"
Consequency.	"	"	72-10	"

774 Cor. 119

The above Map of Township N. 40 North of Range N. 70 East of Mount Diablo Meridian is strictly conformable to the field notes of the survey thereof on file in this Office, which have been examined and approved.

Surveyor General's Office }
Virginia City Nev. }
July 16th 1881 }
C. S. Davis, Sur. Gen. Nev.