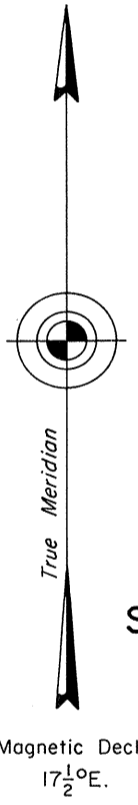
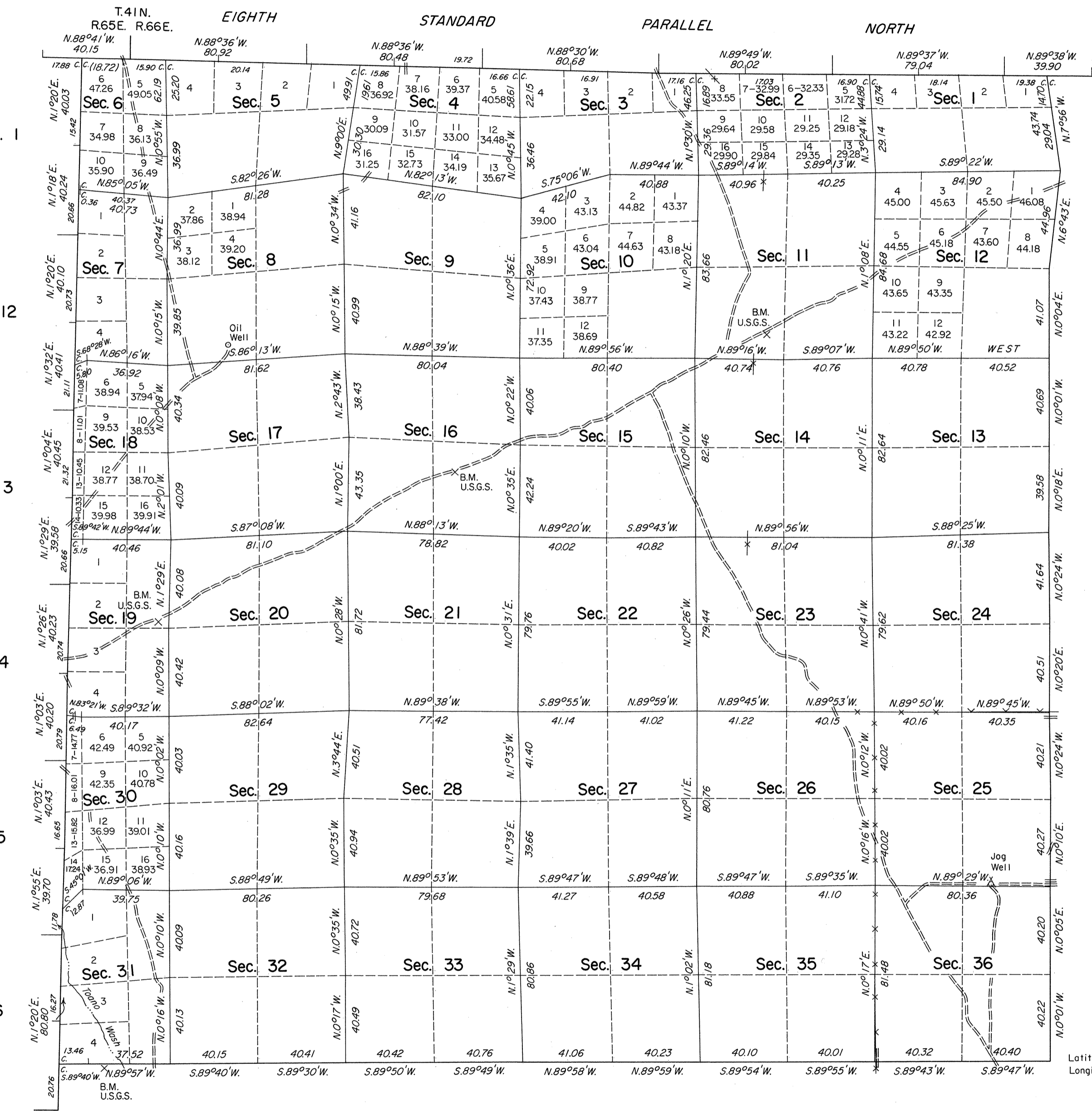


# TOWNSHIP 40 NORTH, RANGE 66 EAST, OF THE MOUNT DIABLO MERIDIAN, NEVADA

## DEPENDENT RESURVEY

Sec. 36      Sec. 31      Sec. 32      Sec. 33      Sec. 34      Sec. 35      Sec. 36



History of the earlier surveys is contained in the field notes.

This plat represents a dependent resurvey of the Eighth Standard Parallel North, through a portion of Rs. 65 and 66 E., the east boundary of T. 40 N., R. 65 E., and the south and east boundaries and subdivisional lines of T. 40 N., R. 66 E., designed to restore the corners in their original locations according to the best available evidence.

Lottings and areas, except as shown hereon, are as shown on the plat approved August 14, 1895.

Survey executed by Robert A. Pratt and Ronald E. Williams, Cadastral Surveyors, April 17 to June 16, 1980, under Special Instructions dated April 9, 1980, for Group No. 582, Nevada.

UNITED STATES DEPARTMENT OF THE INTERIOR  
BUREAU OF LAND MANAGEMENT

Reno, Nevada      October 12, 1982

This plat is strictly conformable to the approved field notes, and the survey, having been correctly executed in accordance with the requirements of law and the regulations of this Bureau, is hereby accepted.

For the Director  
*Lacel E. Bland*  
Chief Cadastral Surveyor

Latitude 41°18'05.1"N.  
Longitude 114°26'57.2"W.

