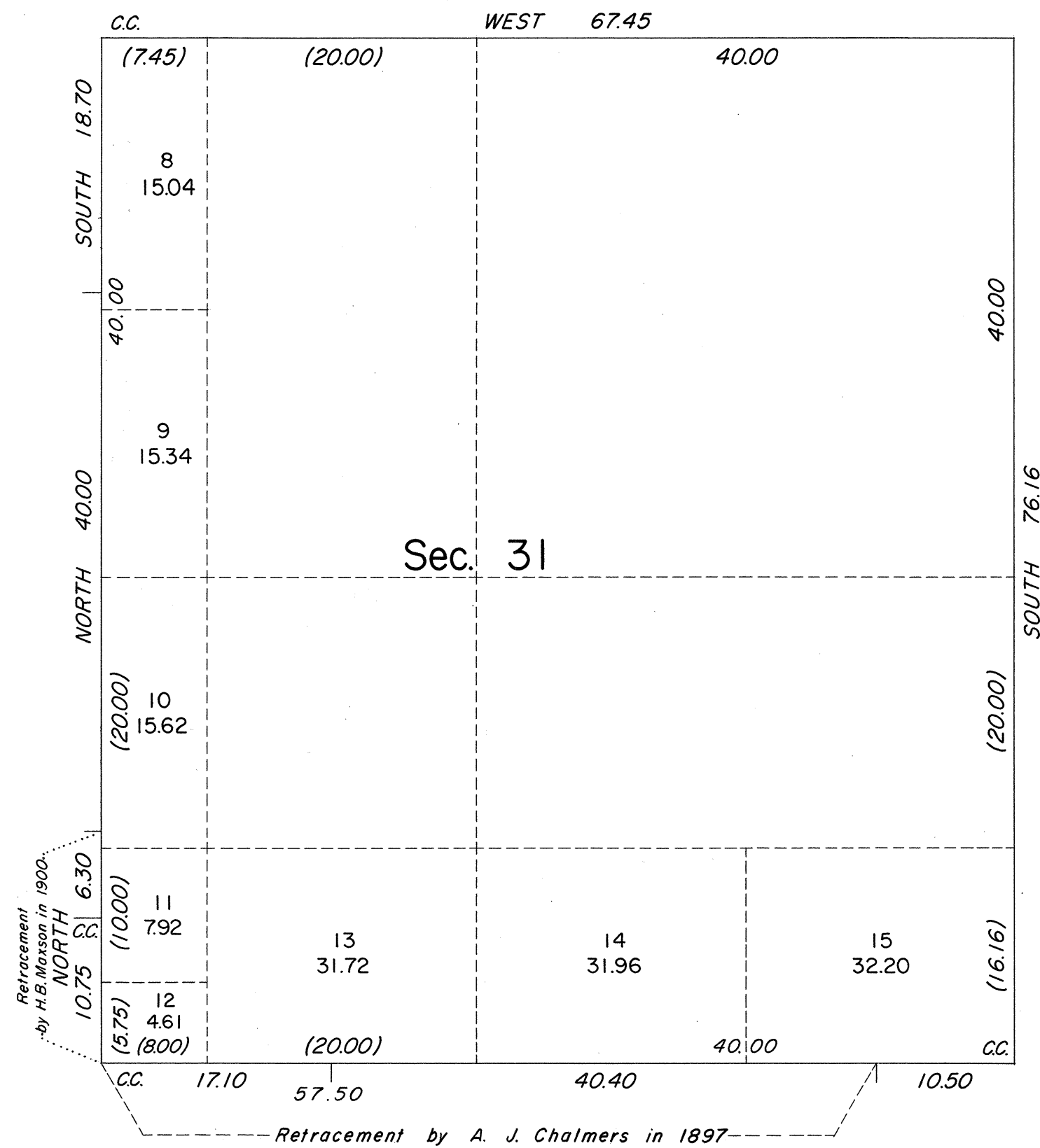
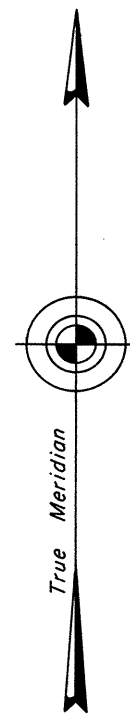


# TOWNSHIP 40 NORTH, RANGE 56 EAST, OF THE MOUNT DIABLO MERIDIAN, NEVADA

## SUPPLEMENTAL PLAT OF SECTION 31



This supplemental plat showing amended lottings for sec. 31, T. 40 N., R. 56 E., is based upon the plat approved December 15, 1897, the plats of Tps. 39 and 40 N., R. 55 E., approved April 6, 1901, and the official field note record of the retracement of the south boundary by Deputy Surveyor A.J. Chalmers in 1897.

UNITED STATES DEPARTMENT OF THE INTERIOR  
BUREAU OF LAND MANAGEMENT  
Washington, D.C. February 3, 1972

This plat, showing amended lottings, is based upon the official records and, having been correctly prepared in accordance with the regulations, is hereby accepted.

For the Director

*Clark I. Lamm*

Chief, Division of Cadastral Survey

