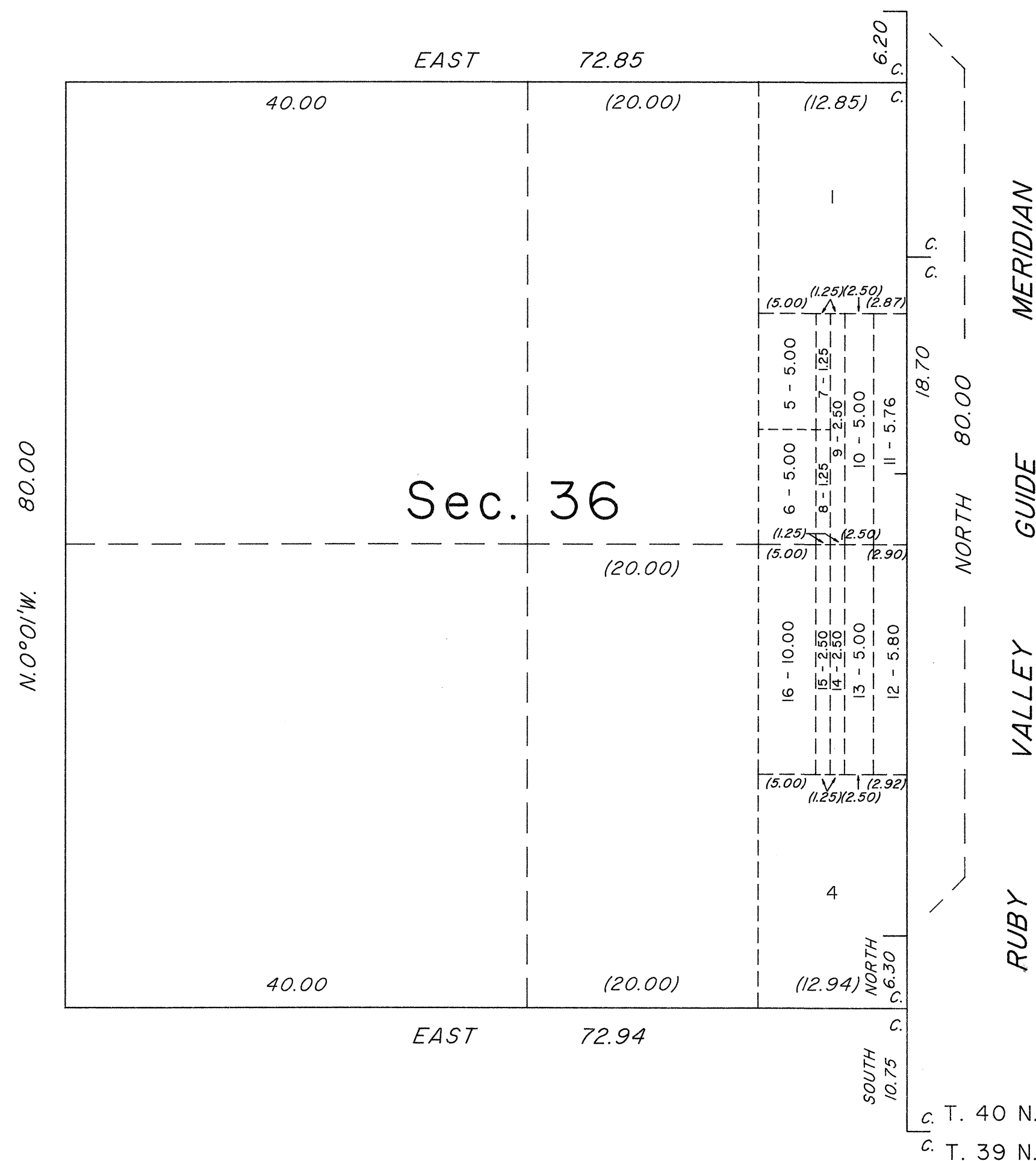
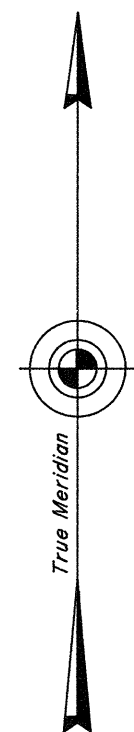


TOWNSHIP 40 NORTH, RANGE 55 EAST, MOUNT DIABLO MERIDIAN, NEVADA
SUPPLEMENTAL PLAT OF SECTION 36



This plat represents an amended lotting of original lots 2 and 3 of sec. 36, T. 40 N., R. 55 E., Mount Diablo Meridian, Nevada, and is based upon the plat approved December 15, 1897 and the plat approved April 6, 1901 and accepted August 16, 1901.

UNITED STATES DEPARTMENT OF THE INTERIOR
BUREAU OF LAND MANAGEMENT

Reno, Nevada June 23, 1992

This plat, showing amended lottings, is based upon the official records, and having been correctly prepared in accordance with the regulations of this Bureau, is hereby accepted.

For the Director

James R. Munson

Acting Chief Cadastral Surveyor, Nevada

