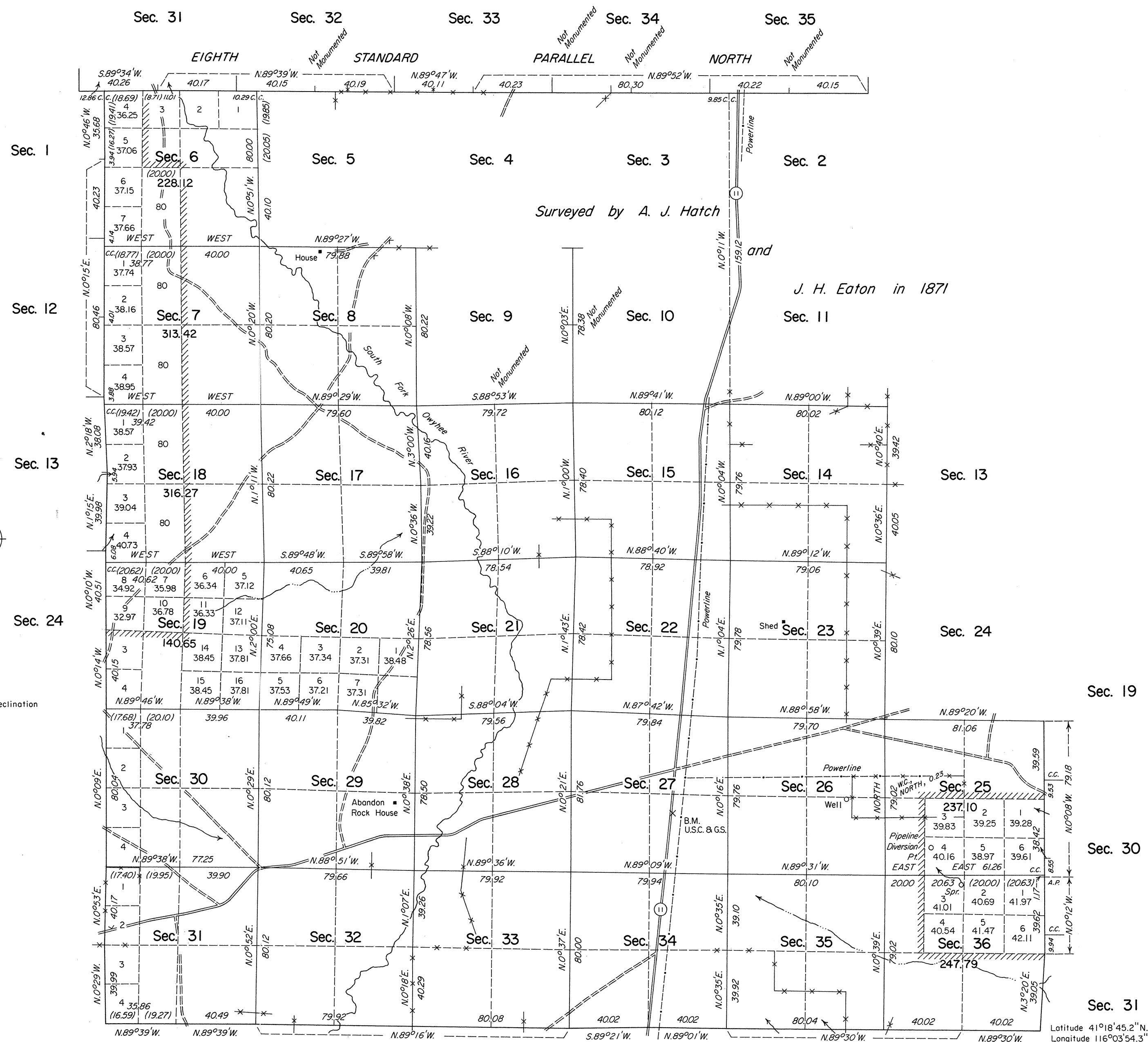


# TOWNSHIP 40 NORTH, RANGE 52 EAST, OF THE MOUNT DIABLO MERIDIAN, NEVADA

## DEPENDENT RESURVEY AND SURVEY



History of the earlier surveys is contained in the field notes.

This plat represents a dependent resurvey of the Eighth Standard Parallel North, through a portion of R. 52 E., and a portion of the east boundary, the south and west boundaries and a portion of the subdivisional lines of T. 40 N., R. 52 E., designed to restore the corners in their original locations according to the best available evidence; and the survey completing the subdivisional lines of T. 40 N., R. 52 E.

Lottings and areas, except as shown hereon, are as shown on the plat approved February 25, 1871.

Survey executed by Joseph A. Bastian, Cadastral Surveyor, July 30, 1979 to November 9, 1979, under Special Instructions dated May 7, 1979, for Group No. 574, Nevada.

Sec. 19

Sec. 30

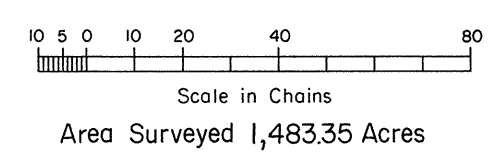
Sec. 31

UNITED STATES DEPARTMENT OF THE INTERIOR  
BUREAU OF LAND MANAGEMENT

Reno, Nevada September 8, 1982

This plat is strictly conformable to the approved field notes, and the survey, having been correctly executed in accordance with the requirements of law and the regulations of this Bureau, is hereby accepted.

For the Director  
*Lael E. Bland*  
Chief Cadastral Surveyor



Latitude  $41^{\circ}18'45.2''N.$   
Longitude  $116^{\circ}03'54.3''W.$