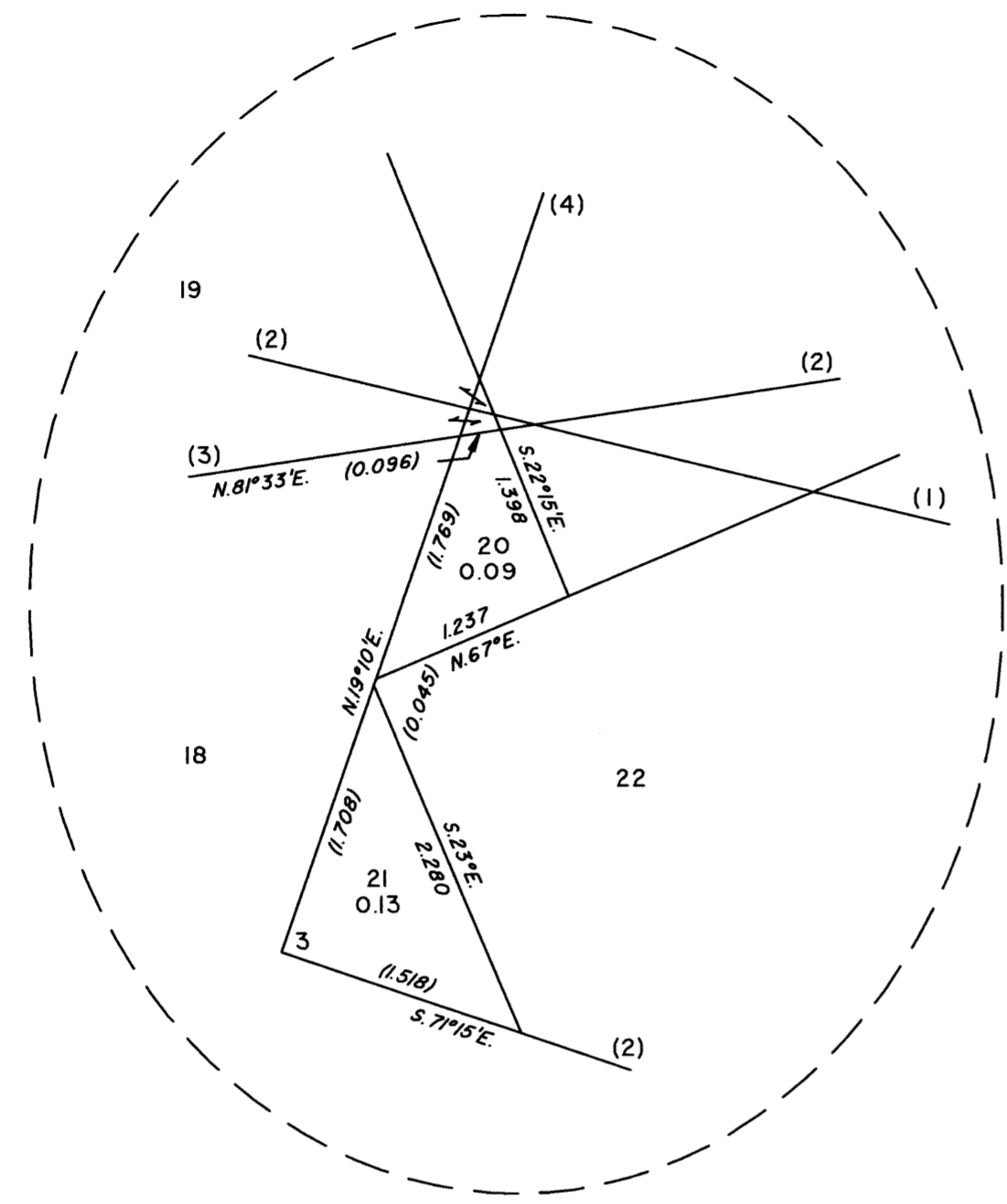
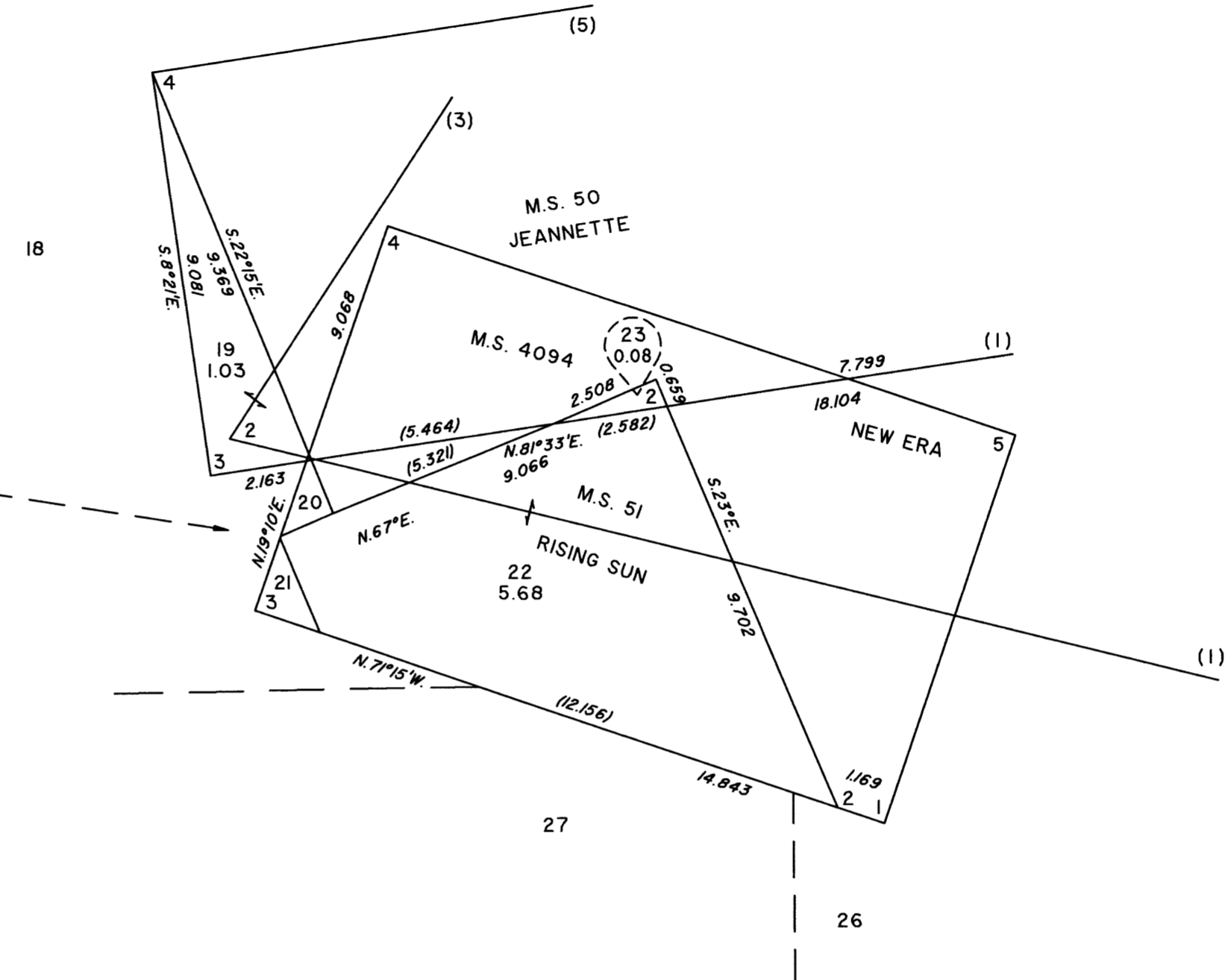


# TOWNSHIP 40 NORTH, RANGE 51 EAST, OF THE MOUNT DIABLO MERIDIAN, NEVADA

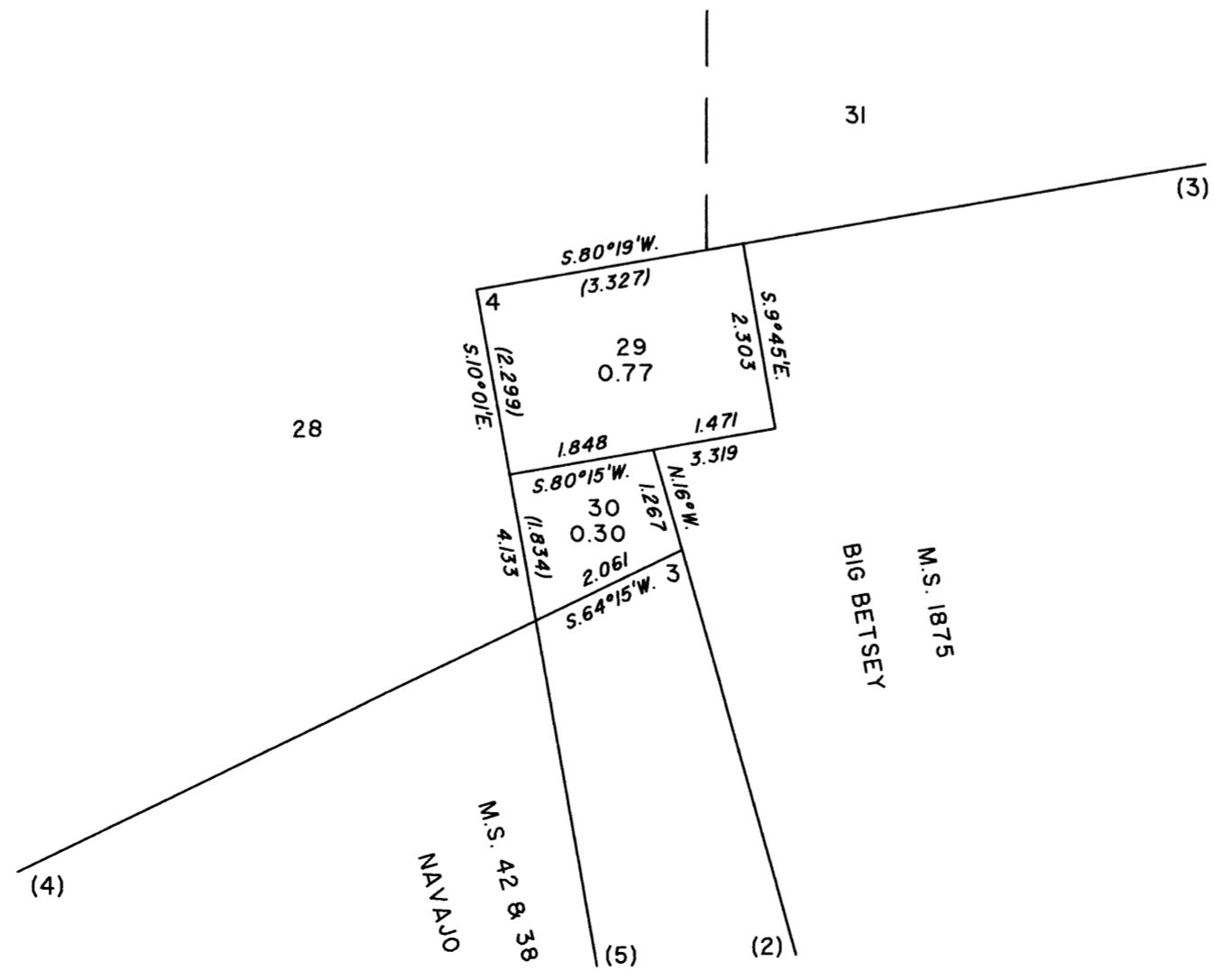
## DETAILS



DETAIL "B"  
Not to Scale



DETAIL "C"  
Not to Scale



Reference should be made to Sheet No. 1 for survey information.

UNITED STATES DEPARTMENT OF THE INTERIOR  
BUREAU OF LAND MANAGEMENT

Reno, Nevada March 29, 2021

This plat is strictly conformable to the approved field notes, and the survey, having been correctly executed in accordance with the requirements of law and the regulations of this Bureau, is hereby accepted.

For the Director

Chief Cadastral Surveyor for Nevada

OFFICIALLY FILED  
NEVADA STATE OFFICE  
at 10:00 AM on APR 02 2021