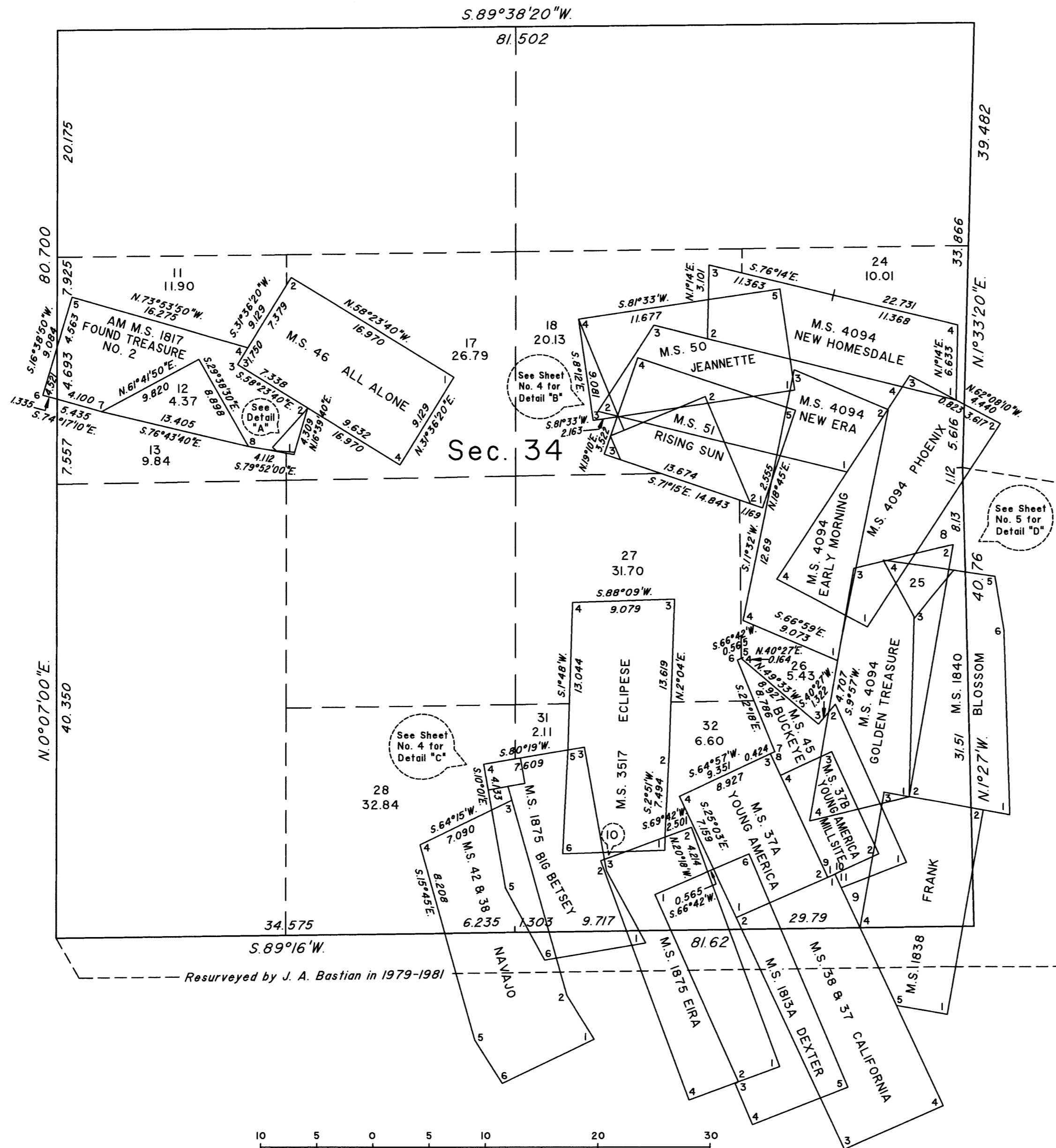


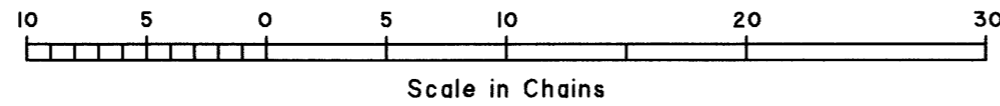
TOWNSHIP 40 NORTH, RANGE 5I EAST, OF THE MOUNT DIABLO MERIDIAN, NEVADA

ENLARGED DIAGRAM

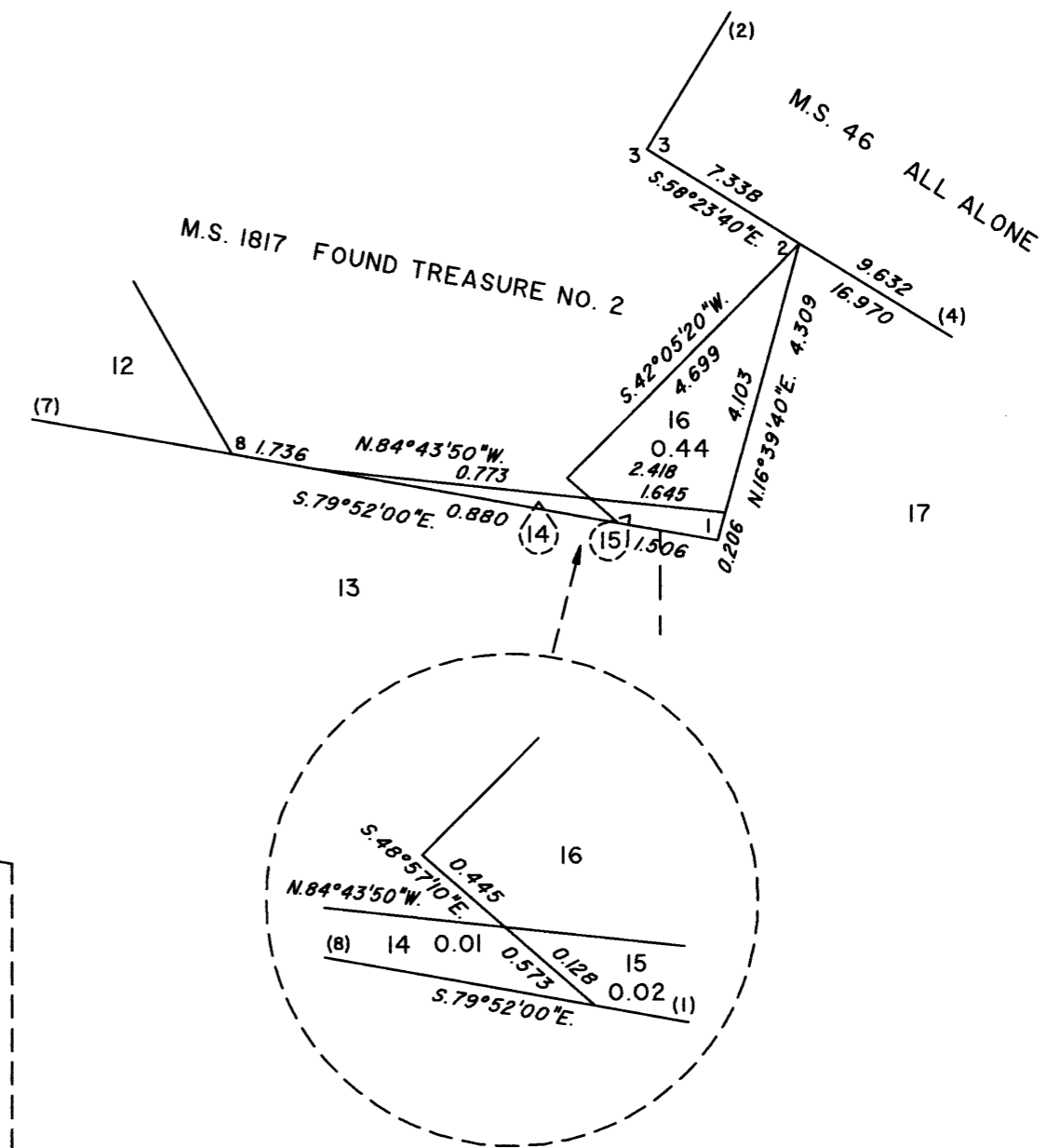
OFFICIALLY FILED
NEVADA STATE OFFICE
at 10:00 AM on
APR 02 2021



Resurveyed by J. A. Bastian in 1979-1981



DETAIL "A"
Not to Scale



Reference should be made to Sheet No. 1 for survey information.

UNITED STATES DEPARTMENT OF THE INTERIOR
BUREAU OF LAND MANAGEMENT

Reno, Nevada March 29, 2021

This plat is strictly conformable to the approved field notes, and the survey, having been correctly executed in accordance with the requirements of law and the regulations of this Bureau, is hereby accepted.

For the Director

Chief Cadastral Surveyor for Nevada