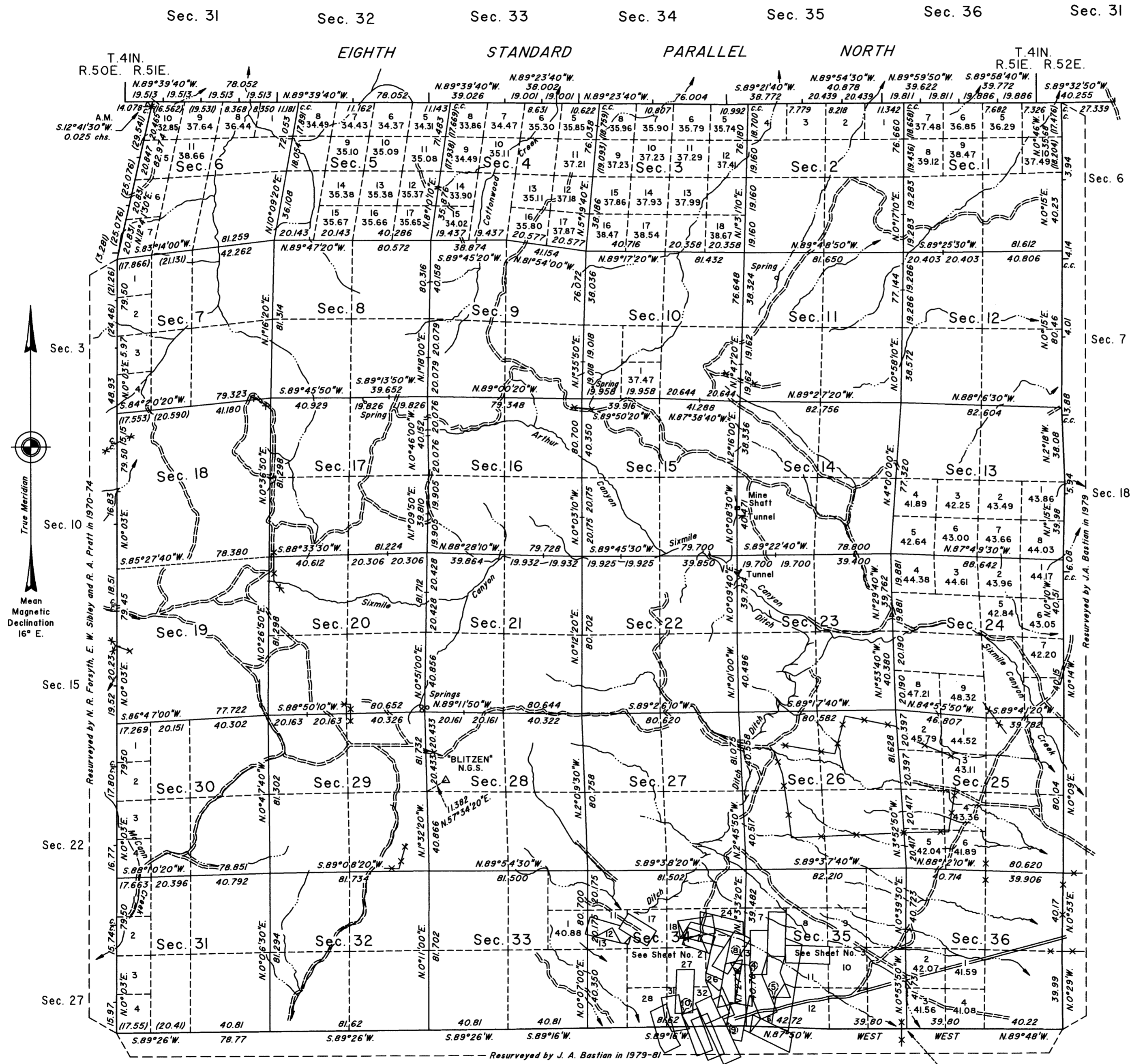


TOWNSHIP 40 NORTH, RANGE 51 EAST, OF THE MOUNT DIABLO MERIDIAN, NEVADA

DEPENDENT RESURVEY AND CORRECTIVE DEPENDENT RESURVEY

OFFICIALLY FILED
NEVADA STATE OFFICE
at 10:00 AM APR 02 2021



A history of surveys is contained in the field notes.

This plat, in five sheets, represents the dependent resurvey of the Eighth Standard Parallel North, through Range 51 East, and a portion of Range 52 East, the corrective dependent resurvey of a portion of the west boundary, and the dependent resurvey of a portion of the subdivisional lines and portions of certain mineral surveys designed to restore the corners in their true original locations according to the best available evidence, Township 40 North, Range 51 East, Mount Diablo Meridian, Nevada.

This plat also shows amended lottings created by the segregation of the Oreande lode of cancelled Mineral Survey No. 40; the Virginia lode of cancelled Mineral Survey No. 41; the McVystal lode of cancelled Mineral Survey No. 48; the May Queen lode of cancelled Mineral Survey No. 49; the Irish Boy lode (unsurveyed); the N. Belle Isle lode (unsurveyed); the Belle Isle lode (unsurveyed); and the Yuba or Howe lode (unsurveyed), based on this survey, the plat and field notes of the survey approved and accepted May 5, 1983, and the mineral survey records.

Except as indicated hereon, the lotting and areas are as shown on the plats approved February 25, 1871, January 13, 1885, and the plat accepted May 5, 1983.

Unless otherwise indicated in the field notes, all courses and distances shown on the plat along the perimeter of the mineral segregation areas were taken or computed from the appropriate mineral survey record.

Survey executed by Brett K. Jefferson, Professional Land Surveyor, Nevada, Don R. Aschenbach, Bradley F. Dillon and Michael O. Jones, Cadastral Surveyors and Mark G. Petrosine, Surveying Technician, beginning August 17, 2009 and completed October 24, 2019, pursuant to Special Instructions dated June 2, 2009, and Supplemental Special Instructions dated December 17, 2009, for Group No. 876, Nevada.

UNITED STATES DEPARTMENT OF THE INTERIOR
BUREAU OF LAND MANAGEMENT

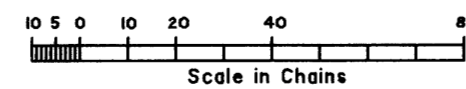
Reno, Nevada March 29, 2021

This plat is strictly conformable to the approved field notes, and the survey, having been correctly executed in accordance with the requirements of law and the regulations of this Bureau, is hereby accepted.

For the Director

Chief Cadastral Surveyor for Nevada

Latitude 41°18'47.940" N.
Longitude 116°11'58.725" W.
(NAD83) (GORS96)



CWM