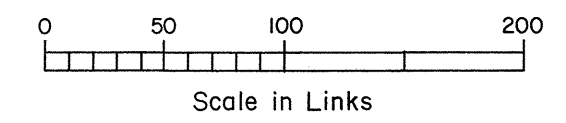
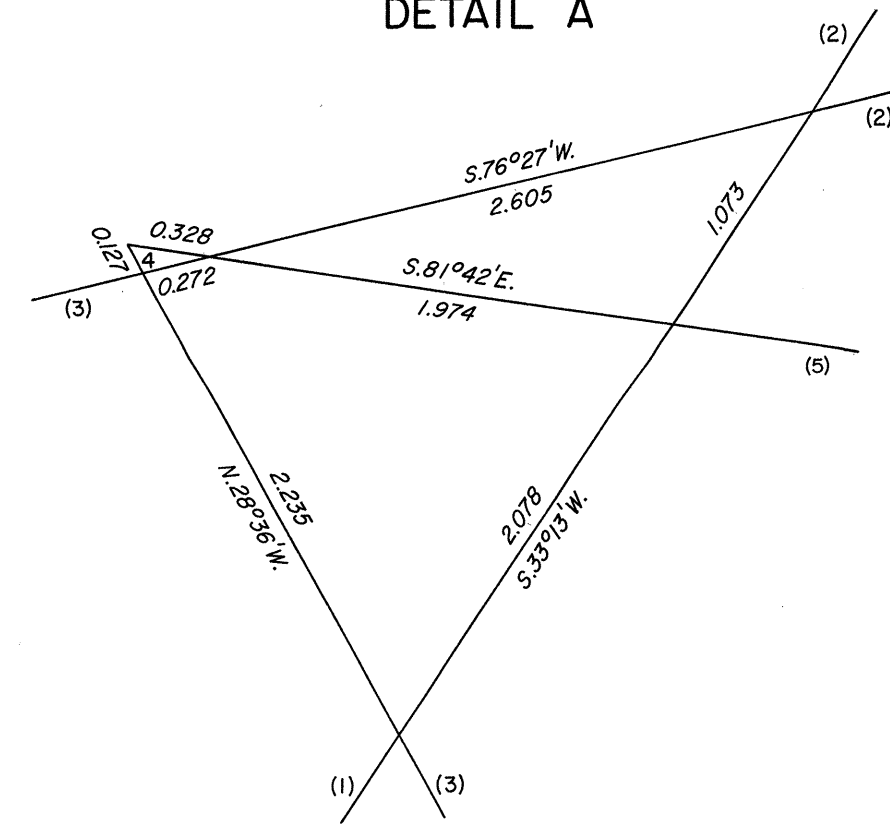


TOWNSHIP 40 NORTH, RANGE 51 EAST, OF THE MOUNT DIABLO MERIDIAN, NEVADA
DEPENDENT RESURVEY

ORIGINAL

OFFICIALLY FILED
NEVADA STATE OFFICE
MAY 20, 1983

DETAIL A



History of the earlier surveys is contained in the field notes.

A dependent resurvey of the south boundary was executed concurrently under T. 39 N., R. 51 E., of this Group.

This plat represents a dependent resurvey of a portion of the subdivisional lines and the retracement and remonumentation of certain corners of Mineral Survey Nos. 37A & B, 42 & 38, 45, 50, 51, 1813A, 1840, 1851, 1868, 1869, 1870, 1875, 3517 and 4094 in T. 40 N., R. 51 E., designed to restore the corners in their true original locations according to the best available evidence.

Except as shown hereon, the lottings and areas are as shown on the plats approved February 25, 1871 and January 13, 1885.

Unless otherwise indicated in the field notes, all courses and distances shown on the plat along the perimeter of the mineral segregation areas, were taken or computed from the appropriate Mineral Survey Record.

Survey executed by Joseph A. Bastian, Cadastral Surveyor, July 7, 1981 to August 14, 1981, under Special Instructions dated May 7, 1979, and Supplemental Special Instructions dated July 16, 1981, for Group No. 574, Nevada.

UNITED STATES DEPARTMENT OF THE INTERIOR
BUREAU OF LAND MANAGEMENT

Reno, Nevada

May 5, 1983

This plat is strictly conformable to the approved field notes, and the survey, having been correctly executed in accordance with the requirements of law and the regulations of this Bureau, is hereby accepted.

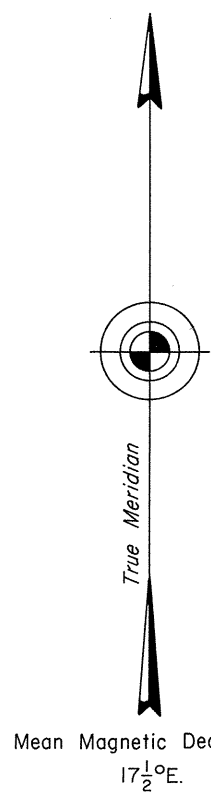
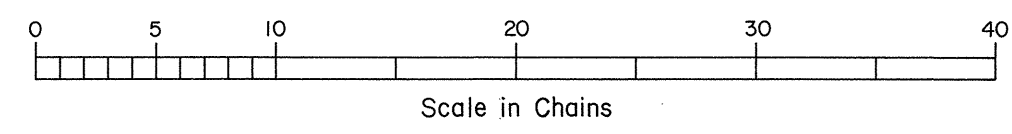
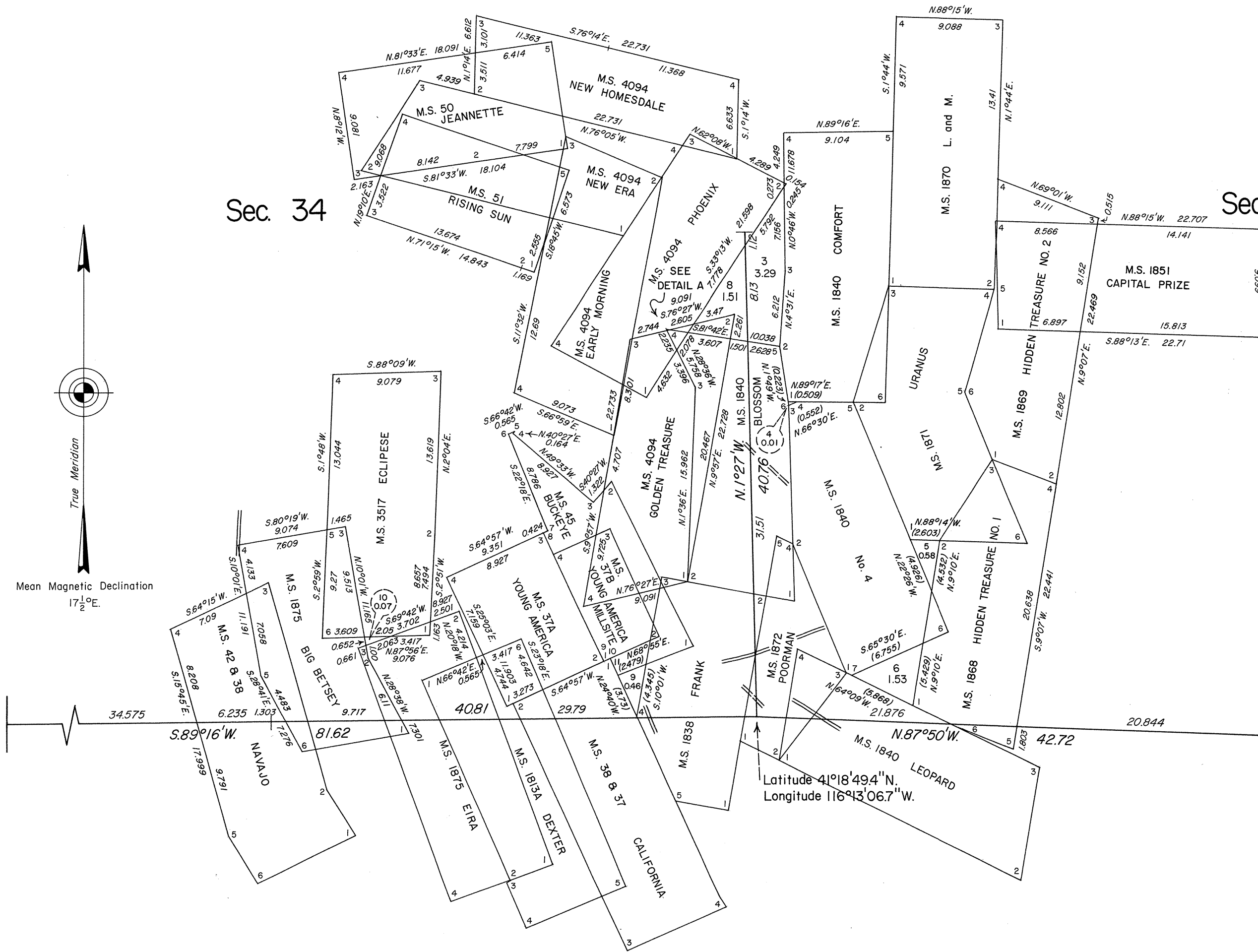
For the Director

Lavel E. Bland

Acting Deputy State Director, Operations

Sec. 34

Sec. 35



Latitude 41°18'49.4"N.
Longitude 116°43'06.7"W.