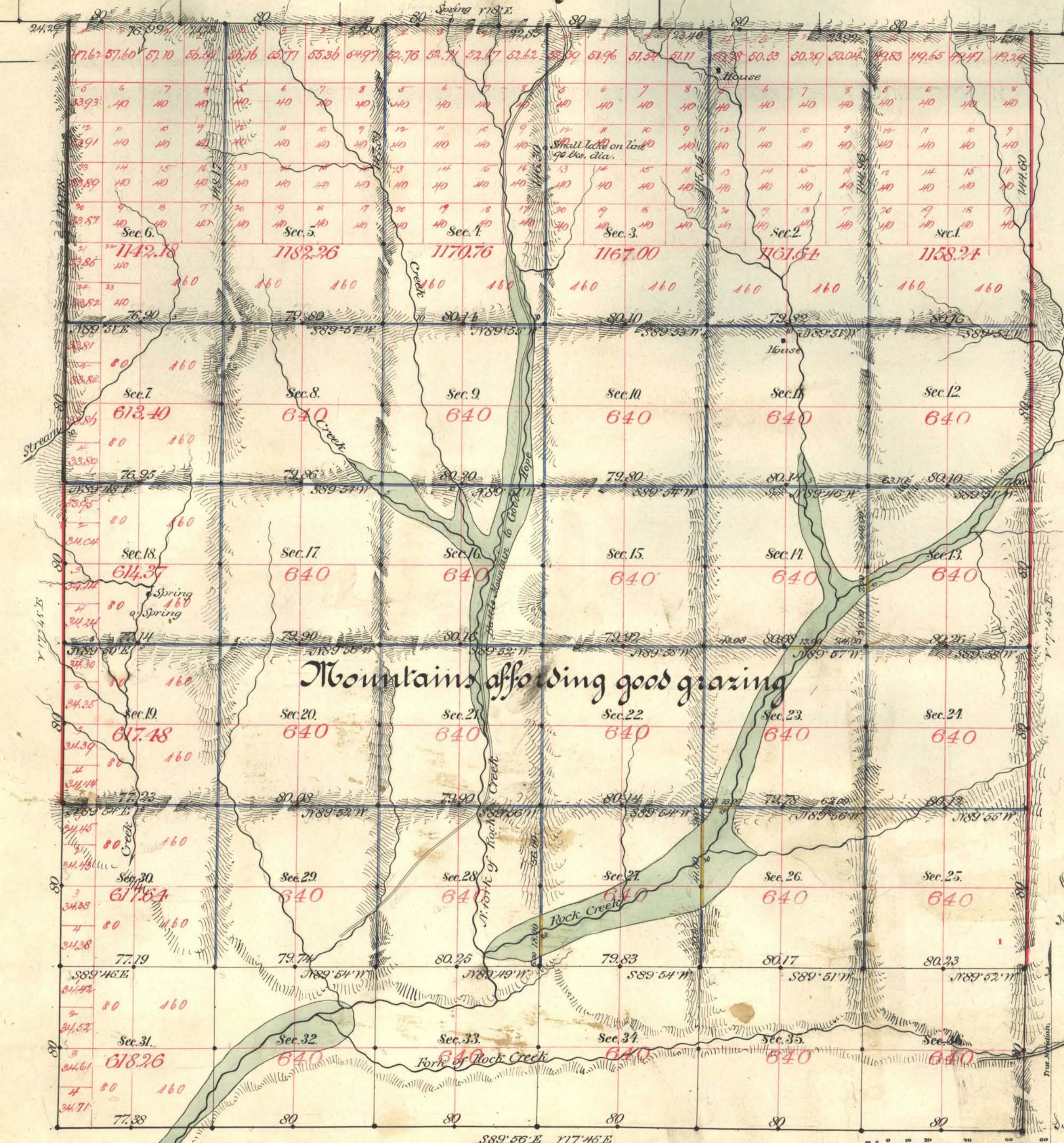


Township No 40 North Range No 48 East N.W. N.W.



Aggregate Area of Public Land Surveyed by
 Hatch, Eaton & Smyles Nov. 16th 1842 3967.02 A.
 by McWilliam & Bridges Nov. 14th 1844 22,097.21 "
 Aggregate 26,064.23 "

Old work commenced January 16th 1843
 " " completed " " "
 New " commenced " 18th 1885
 " " completed " 22nd "

Old work approved by C.S Davis Feb 13th 1873.

Sub done with a bar of 17 1/2 East

Surveys Designated.	By Whom Surveyed.	Date of Contract.	Amount of Surveys.	When Surveyed.	79 Conv.
S. C. & N. by black	Hatch, Eaton & Smyles	Nov. 16 th 1842	77 - 77	1842	54
Sub done.	"	"	70 - 77 - 41	January 1843	147
S. C. by red	Edell & Bell	July 15 th 1882	5 - 76 - 99	1882	169
"	McWilliam & Bridges	Nov. 14 th 1844	2 - 05 - 00	1845	67
"	"	"	2 - 69 - 00	1845	173
Sub done yellow	McWilliam & Bridges	" 14 th "	1 - 29 - 00	January "	174
Conveyance.	"	"	1 - 31 - 95	"	"
	"	"	1 - 33 - 35	"	"

The above Map of Township No. 40 North of Range No. 48 East
 Mount Diablo Meridian is strictly conformable to the field notes of the survey
 thereof on file in this Office, which have been examined and approved.
 Surveyor General's Office, Reno, B. B. Cowing
 U.S. Gen'l of Nevada.
 March 31st 1885