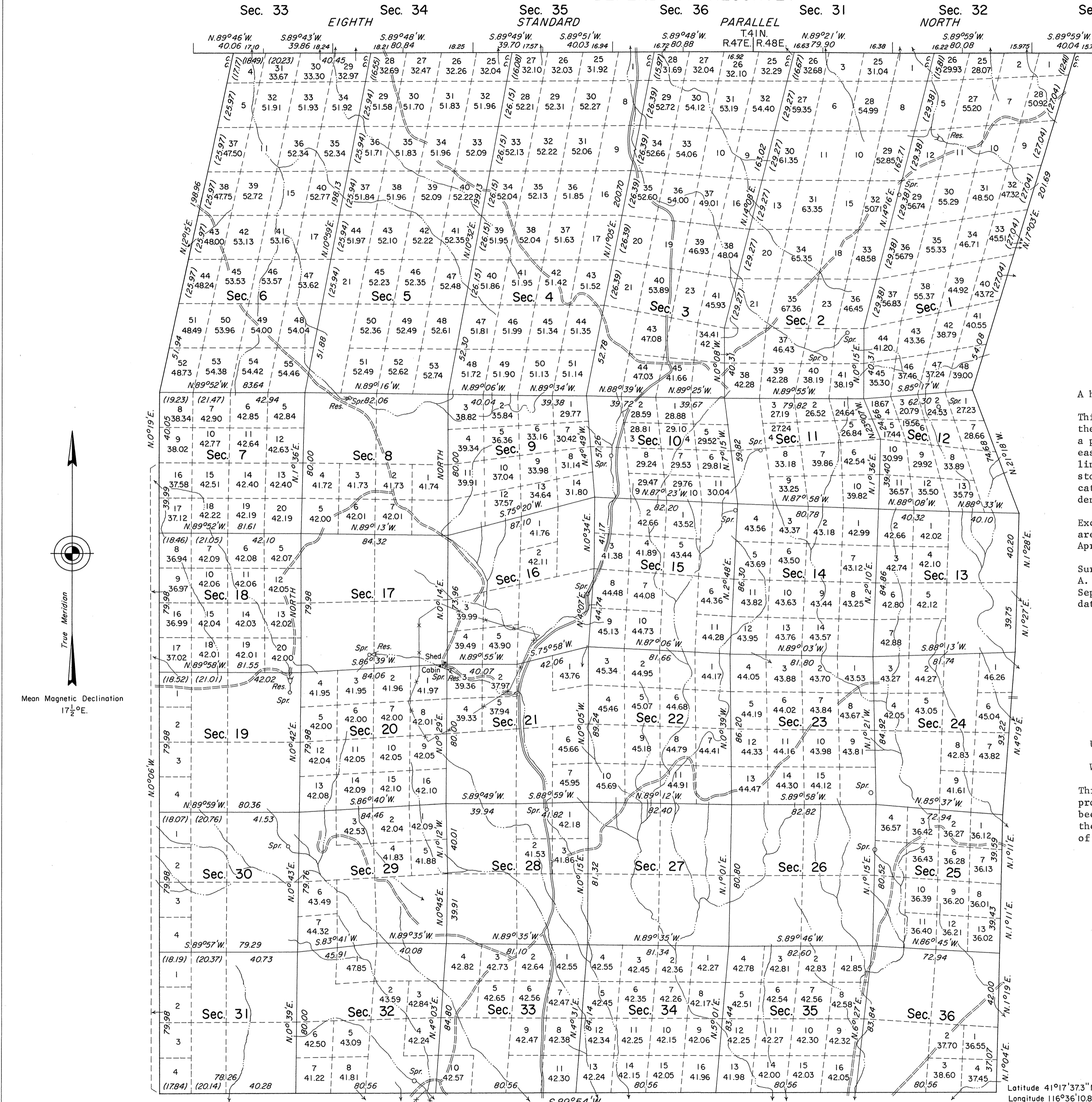


TOWNSHIP 40 NORTH, RANGE 47 EAST, OF THE MOUNT DIABLO MERIDIAN, NEVADA

DEPENDENT RESURVEY

OFFICIALLY FILED
NEVADA STATE OFFICE
10:00 A.M.
11/8/1973



A history of surveys is in the field notes.

This plat represents a dependent resurvey of the Eighth Standard Parallel North, through a portion of Rs. 47 and 48 E., and the south, east and west boundaries and the subdivisional lines of T. 40 N., R. 47 E., designed to restore the corners in their true original locations according to the best available evidence.

Except as indicated hereon, lottings and areas are as shown on the plats approved April 17, 1875 and March 31, 1885.

Survey executed by Eldon W. Sibley and Robert A. Pratt, Cadastral Surveyors, June 2 to September 23, 1970 under Special Instructions dated May 9, 1969 for Group No. 464, Nevada.

UNITED STATES DEPARTMENT OF THE INTERIOR
BUREAU OF LAND MANAGEMENT
Washington, D.C. October 11, 1973

This plat is strictly conformable to the approved field notes, and the survey, having been correctly executed in accordance with the requirements of law and the regulations of this Bureau, is hereby accepted.

For the Director
Clark L. Sumner

Chief, Division of Cadastral Survey

10 5 0 10 20 40 80
Scale in Chains
Area Resurveyed 27,948.20 Acres

Latitude 41°17'37.3"N
Longitude 116°36'10.8"W