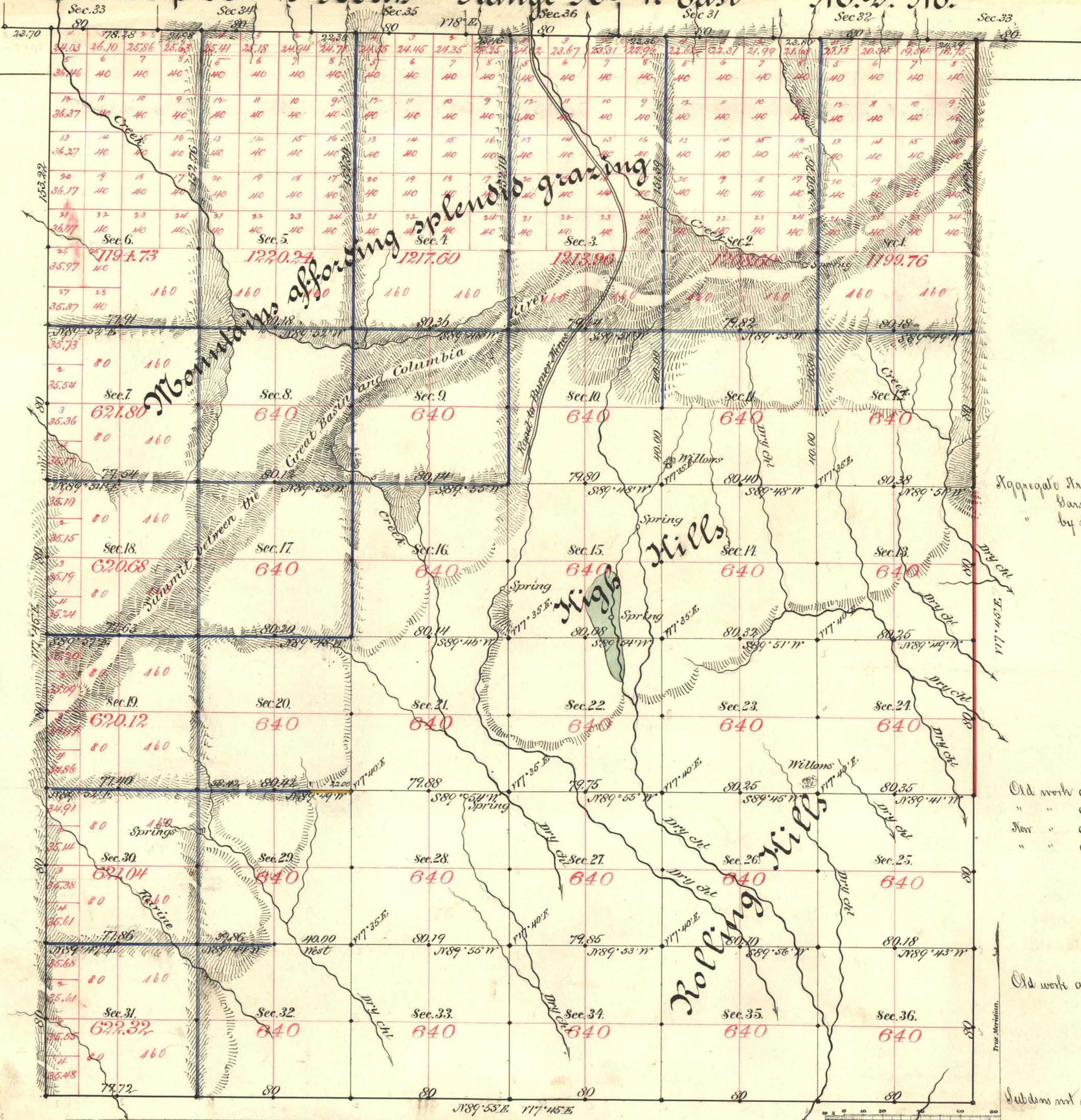


Township No. 40 North Range No. 47 East N.W. N.W.



Aggregate Area of Public Land surveyed by  
 Varado & Doble Dec. 31<sup>st</sup> 1844 10,880.00 A.  
 by Mc Clellan & Bridges Nov. 14<sup>th</sup> 1854 15,780.85 "  
 Aggregate 26,660.85 "

Old work commenced March 1<sup>st</sup> 1845  
 " " completed " 14<sup>th</sup> "  
 New " commenced Jan. 23<sup>rd</sup> 1855  
 " " completed " 28<sup>th</sup> "

Old work approved by E. S. Davis April 14<sup>th</sup> 1845

Subdivs not noted run with a Var. of 17° 45' East

Surveys Designated.	By Whom Surveyed.	Date of Contract.	Amount of Surveys.	When Surveyed.	J.T.P. Cont.
S. & C. bdy. black	Ketchy, Calvert & Dwyer	Nov. 16 <sup>th</sup> 1842	7- 97- 42	1842	541
" " red	Varado & Doble	Dec. 31 <sup>st</sup> 1844	2- 00- 00	1845	67
Subdivs. black	"	"	31- 41- 92	March	"
S. & Brown + W. bdy	S. K. Stewart	Nov. 10 <sup>th</sup> 1854	9- 62- 40	1854	173
" "	Bell & Bell	July 1 <sup>st</sup> 1852	5- 78- 28	1852	147
Subdivs. yellow	Mc Clellan & Bridges	Nov. 14 <sup>th</sup> 1854	22- 00- 00	January 1855	174
blue	"	"	22- 46- 57	"	"
contiguity	"	"	1- 34- 89	"	"

The above Map of Township No. 40 North of Range No. 47 East  
 Mount Diablo Meridian is strictly conformable to the field notes of the survey  
 thereof on file in this Office, which have been examined and approved.

Surveyor General's Office, Reno, E. C. Downing  
 March 31<sup>st</sup> 1885 U.S. Surv. Gen'l. of Nevada.