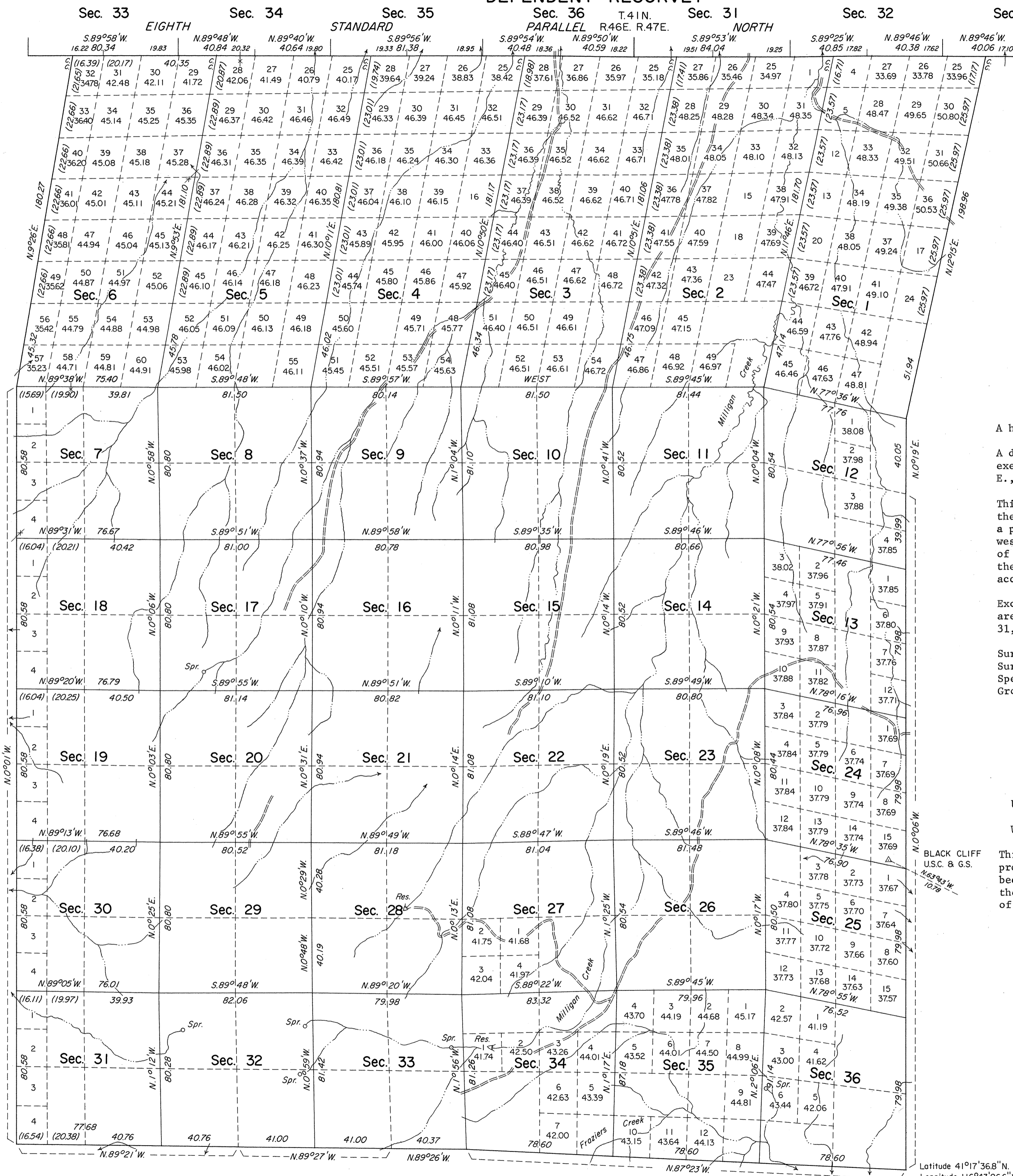


TOWNSHIP 40 NORTH, RANGE 46 EAST, OF THE MOUNT DIABLO MERIDIAN, NEVADA

DEPENDENT RESURVEY



A history of surveys is in the field notes.

A dependent resurvey of the east boundary was executed concurrently under T. 40 N., R. 47 E., of this group.

This plat represents a dependent resurvey of the Eighth Standard Parallel North, through a portion of Rs. 46 and 47 E., the south and west boundaries and the subdivisional lines of T. 40 N., R. 46 E., designed to restore the corners in their true original locations according to the best available evidence.

Except as indicated hereon, lottings and areas are as shown on the plat approved March 31, 1885.

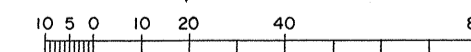
Survey executed by Eldon W. Sibley, Cadastral Surveyor, May 28 to August 14, 1970 under Special Instructions dated May 9, 1969 for Group No. 464, Nevada.

UNITED STATES DEPARTMENT OF THE INTERIOR
BUREAU OF LAND MANAGEMENT
Washington, D.C. October 11, 1973

This plat is strictly conformable to the approved field notes, and the survey, having been correctly executed in accordance with the requirements of law and the regulations of this Bureau, is hereby accepted.

For the Director

Chief, Division of Cadastral Survey



Scale in Chains
Area Resurveyed 27,555.16 Acres

Latitude 41°17'36.8"N.
Longitude 116°43'06.6"W.