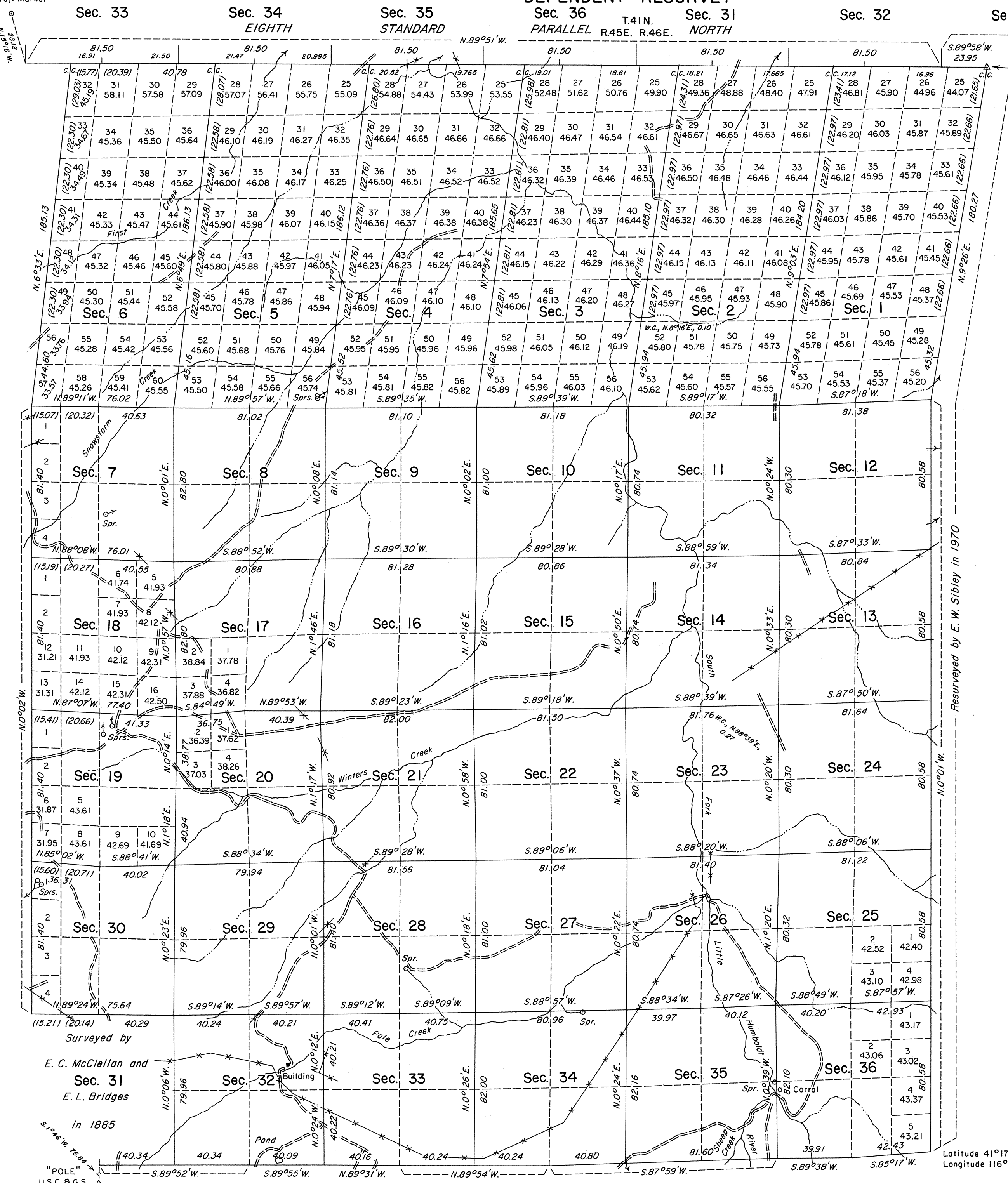


ORIGINAL

TOWNSHIP 40 NORTH, RANGE 45 EAST, OF THE MOUNT DIABLO MERIDIAN, NEVADA

DEPENDENT RESURVEY

"4789 - RIMROCK"
B.L.M. Proj. Marker



U.S.G.S.
Latitude $41^{\circ} 24' 04.366'' N.$
Longitude $116^{\circ} 49' 33.248'' W.$
NAD 27

History of the earlier surveys is contained in the field notes.

The Eighth Standard Parallel North, through R. 45 E. and a portion of R. 44 E., was executed concurrently under this same Group.

This plat represents the dependent resurvey of the Eighth Standard Parallel North, through a portion of R. 46 E., and a portion of the east and west boundaries and the subdivisional lines of T. 40 N., R. 45 E., designed to restore the corners in their true original locations according to the best available evidence.

Lottings and areas, except as indicated hereon, are as shown on the plat approved March 31, 1885.

Survey executed by James A. Mack, Cadastral Surveyor, beginning July 23, 1987 and completed June 13, 1989, under Special Instructions dated July 7, 1987 for Group No. 651, Nevada.

UNITED STATES DEPARTMENT OF THE INTERIOR
BUREAU OF LAND MANAGEMENT

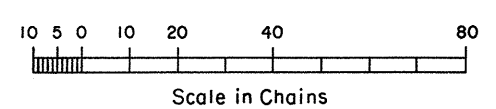
Reno, Nevada July 26, 1989

This plat is strictly conformable to the approved field notes, and the survey, having been correctly executed in accordance with the requirements of law and the regulations of this Bureau, is hereby accepted.

For the Director

Lucel E. Bland

Chief Cadastral Surveyor



Latitude $41^{\circ} 17' 45.5'' N.$
Longitude $116^{\circ} 49' 58.7'' W.$
NAD 27

T.40N., R.45E., M.D.M.

JRM