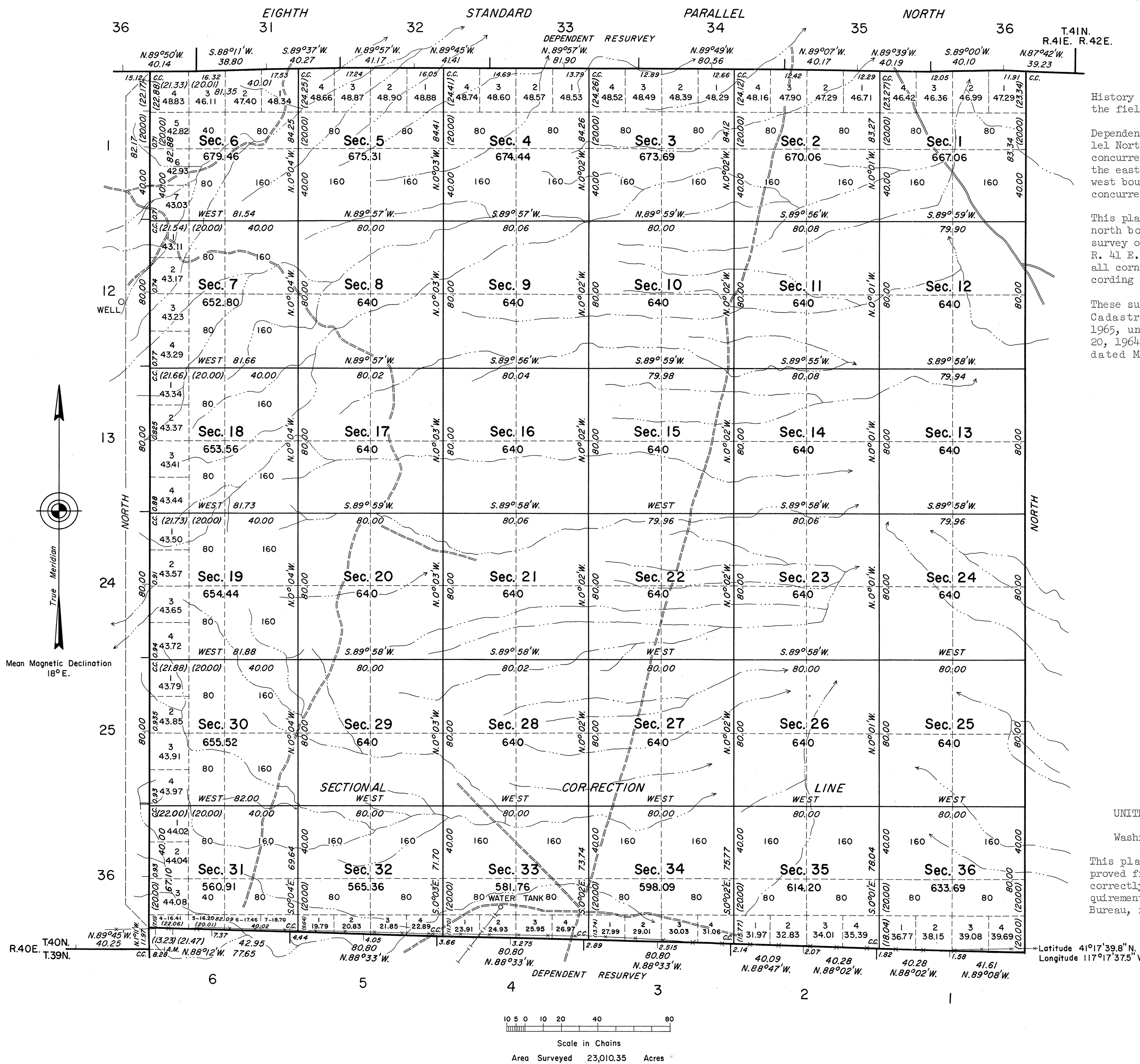


TOWNSHIP 40 NORTH, RANGE 41 EAST, OF THE MOUNT DIABLO MERIDIAN, NEVADA

OFFICIALLY FILED
NEVADA LAND OFFICE

10:00 AM April 4, 1968



History of the earlier surveys is contained in the field notes.

Dependent resurvey of the Eighth Standard Parallel North, through Range 41 East was executed concurrently under T. 41 N., R. 41 E. Survey of the east boundary of T. 40 N., R. 40 E., and the west boundary of T. 40 N., R. 42 E., was executed concurrently.

This plat represents a dependent resurvey of the north boundary of T. 39 N., R. 41 E., and the survey of the subdivisional lines of T. 40 N., R. 41 E. The resurvey was designed to restore all corners in their true original locations according to the best available evidence.

These surveys were executed by Lancel E. Bland, Cadastral Surveyor, May 25, 1964, to July 13, 1965, under Special Instructions dated February 20, 1964, and Supplemental Special Instructions dated May 27, 1964, for Group No. 421, Nevada.

UNITED STATES DEPARTMENT OF THE INTERIOR
BUREAU OF LAND MANAGEMENT
Washington, D. C. January 18, 1968

This plat is strictly conformable to the approved field notes, and the survey, having been correctly executed in accordance with the requirements of law and the regulations of this Bureau, is hereby accepted.

For the Director

R. E. Brown

Chief, Division of Engineering