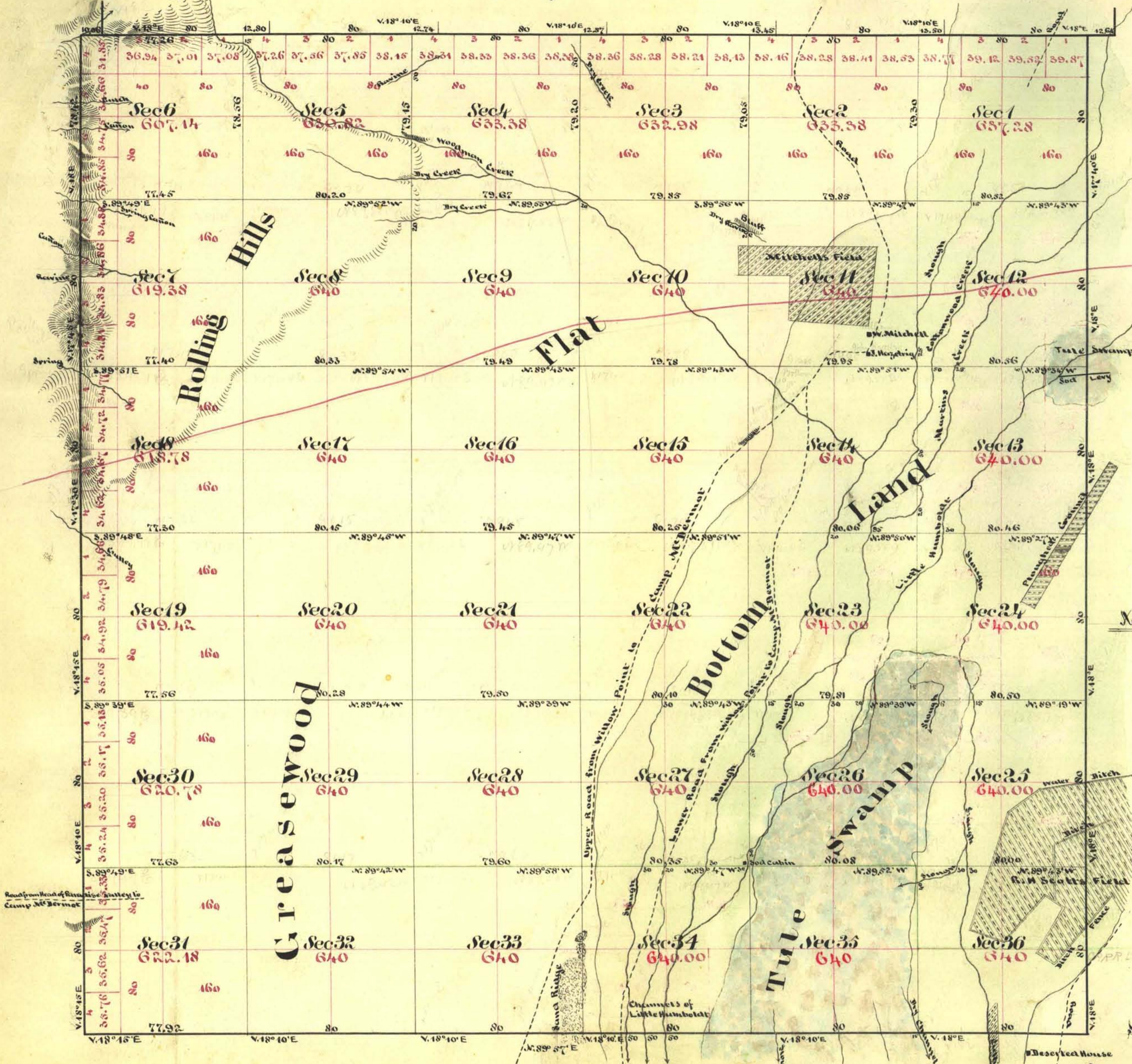


Township N^o 40 North

Range N^o 39 East

Mount Diablo Meridian



Aggregate Area of Public Land Surveyed 21,435.52 Acres
 Estimated " " Tule Swamp 4,440.00 "
 Aggregate 22,875.52 "

Aggregate Area of Public Land Surveyed 22,875.52

Note, the Bottom Land in the South East portion of this Township is subject to Over flow from the Martinez, Cottonwood and Little Humboldt Creeks during the Winter and Spring months but large quantities of Hay are cut upon it.

— Twenty five mile limit of Central Pacific Rail Road

Subdivision Lines not otherwise noted run with a variation of 1/4^o East

Surveys Designated	By whom Surveyed	Date of Contract	Amount of Surveys			When Surveyed
			Mts	chs	lks	
Township Lines	William Epler	July 20 th 1867	23	70	60	1867
Subdivision Lines	O.A. Palmer	December 27 th 1867	59	63	56	February 14 th 1868

76 Con
5
11

The above Map of Township N^o 40 North Range N^o 39 East Mount Diablo Meridian is strictly conformable to the field notes of the Surveys thereon filed in this Office, which have been examined and approved.
 U.S. Surveyor General's Office
 Virginia City Nevada
 May 13th 1868

Reapproved June 16th 1886

A.R. Sadford
 Surveyor General Nevada
 L. C. Corning
 U.S. Surv. Gen. of Nev.
 T 40 N, R 39 E. V.D.