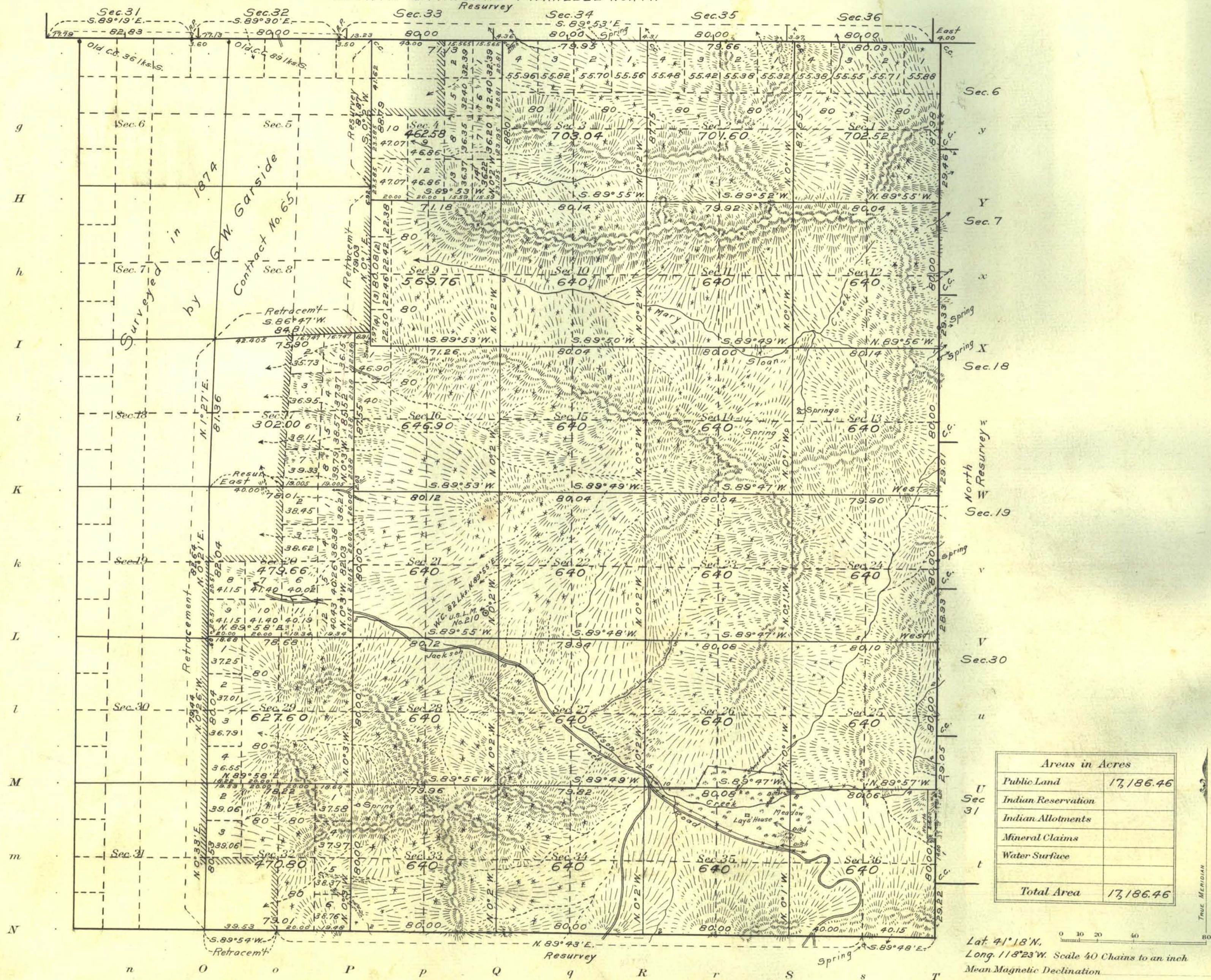


Township N^o 40 North Range N^o 31 East, Mt. Diablo Meridian, Nevada

EIGHTH STANDARD PARALLEL NORTH



Surveys Designated	By Whom Surveyed	Group		Amount of Surveys		When Surveyed	
		No.	Date	Mls.	chs.	Begun	Completed
8th St. Par. N., -Resur.	Walter E. Hoffman	7	May 6, 1913	6	6 - 83	Sep 15, 1913	Sep 18, 1913
East Body - "	"	"	"	6	7 - 98	Aug 8, "	Aug 14, "
South - "	"	"	"	4	39 - 63	" 5, "	" 7, "
" - Retrac'm't.	"	"	"	0	39 - 53	Aug 15, 1913	
Subdivisions - Resur.	"	"	"	1	41 - 87	Aug 22, "	Sep 8, 1913
" - Retrac'm't.	"	"	"	6	7 - 81	Aug 16, 1913	Aug 22, 1913
"	"	"	"	44	48 - 85	" 16, "	Sep 20, "

The above map of Township No. 40 North Range No. 31 East of the Mt. Diablo Meridian Nevada is strictly conformable to the field notes of the survey thereof on file in this office, which have been examined and approved

U. S. Surveyor General's Office.
Reno, Nevada, April 28, 1914.

Matthew Kyle
Surveyor General