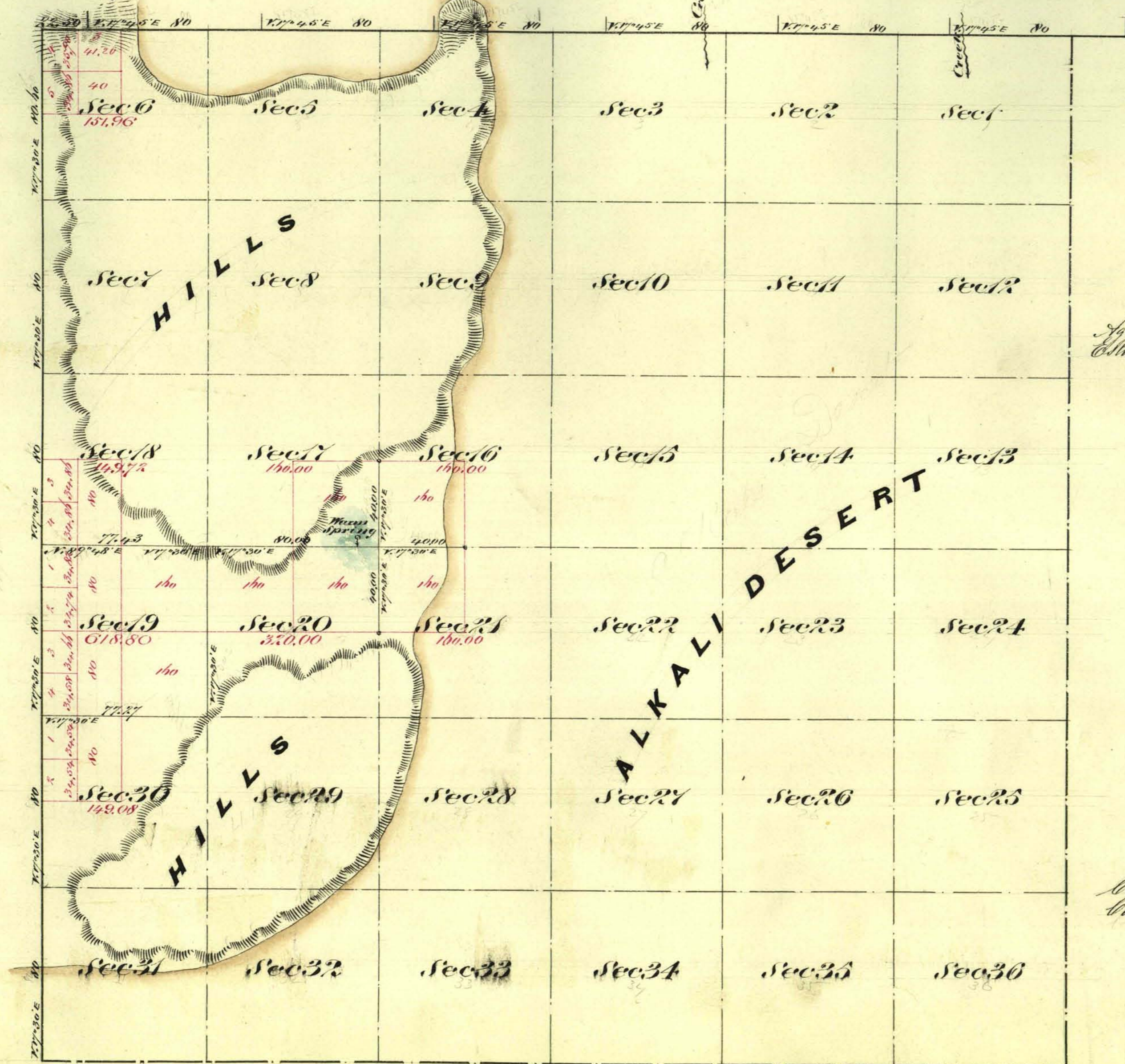


Township N^o 40 North Range N^o 28 East Mount Diablo Meridian



Aggregate Area of Public Land (Surveyed) 1,849.56 Acres
 Estimated " " Mountains & Desert (unsurveyed) 21,047.08 "
 Aggregate 22,896.64 "

Commenced September 20th 1872
 Completed " " "

Surveys Designated	By Whom Surveyed	Date of Contract	Amt of Land	When Surveyed
Township Lines	W. W. Skinner, J. W. Fawcett & C. S. Preble	July 10 th 1873	12 00 00	1873
Subdivision Lines	" " " " " "	" " "	5 34 70	Sept 1873

0659

The above Map of Township N^o 40 North Range N^o 28 East Mount Diablo Meridian is strictly conformable to the field notes of the surveys thereof on file in this Office which have been examined and approved
 W. S. Surveyor General Office
 Virginia City Nevada
 Dec 27th 1873

T 40N. R 28E

E. S. Davis
 W. S. Surveyor General Nevada