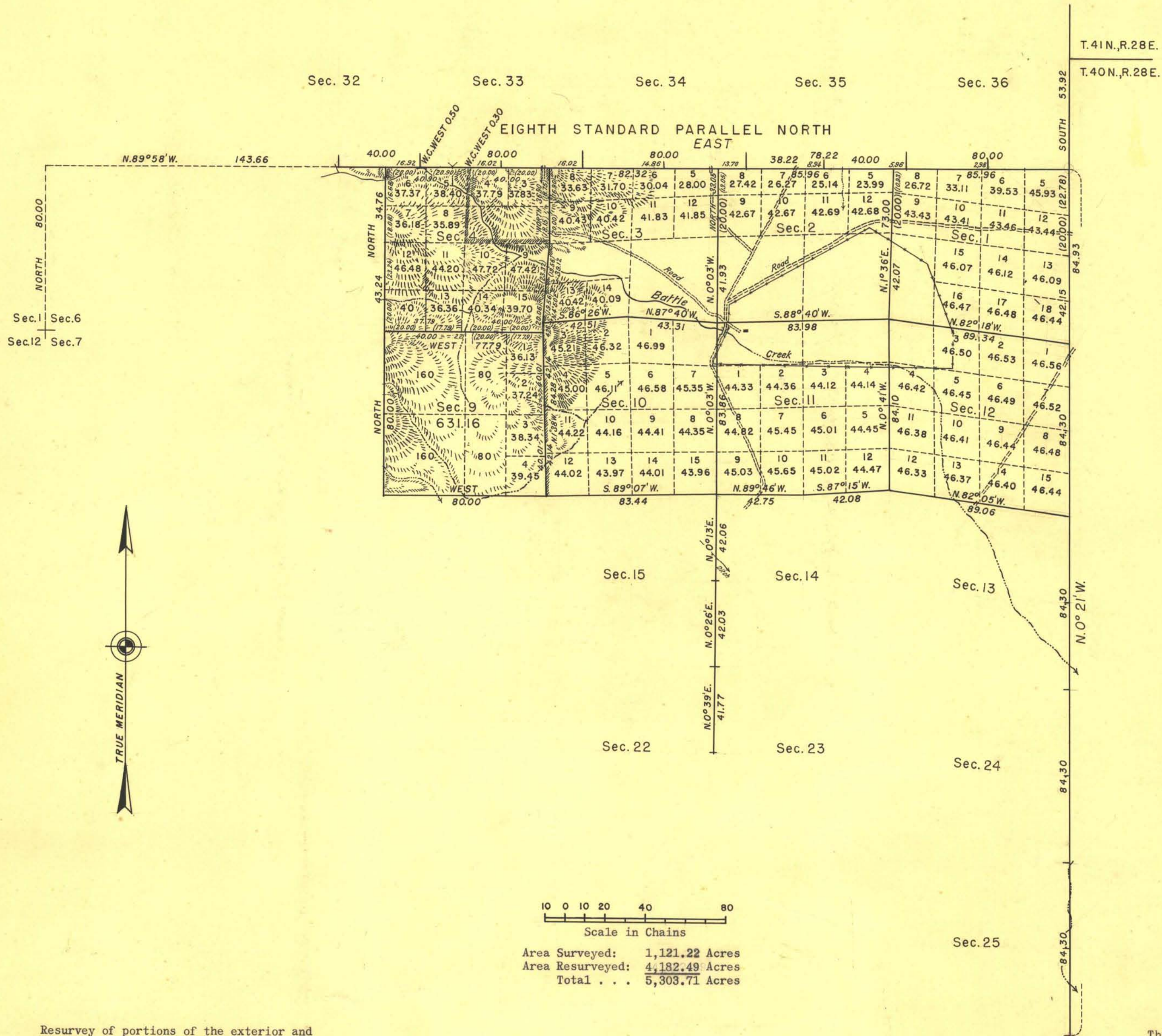


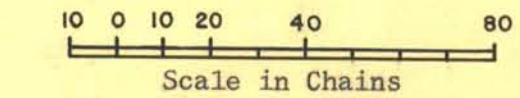
RECEIVED
LAND AND SURVEY OFFICE
BEND, NEVADA ORIGINAL

MAY 5 1952

TOWNSHIP 40 NORTH, RANGE 27 EAST, OF THE MOUNT DIABLO MERIDIAN, NEVADA RESURVEY AND EXTENSION SURVEY



This plat represents a retracement and reestablishment of portions of the original survey designed to restore the corners in their original locations according to the best available evidence, and an extension survey. The lottings and areas are as shown on the plat approved December 27, 1873, except where new areas are shown hereon.



Area Surveyed: 1,121.22 Acres
 Area Resurveyed: 4,182.49 Acres
 Total . . . 5,303.71 Acres

Resurvey of portions of the exterior and subdivisional lines and extension surveys in T. 40 N., R. 27 E., MDM., executed by Roger F. Wilson and Edward A. Taylor, Cadastral Engineers, May 14 to October 17, 1951 under Special Instructions for Group No. 220 Nevada, dated January 31, 1951 and September 21, 1951.

UNITED STATES DEPARTMENT OF THE INTERIOR
 BUREAU OF LAND MANAGEMENT
 Washington, D. C., March 24, 1952

This plat is strictly conformable to the approved field notes, and the survey, having been correctly executed in accordance with the requirements of law and the regulations of this Bureau, is hereby accepted.

For the Director
William F. Richards
 Chief, Branch of Surveys

R.E.C.

17115

605-A

T. 40 N., R. 27 E.