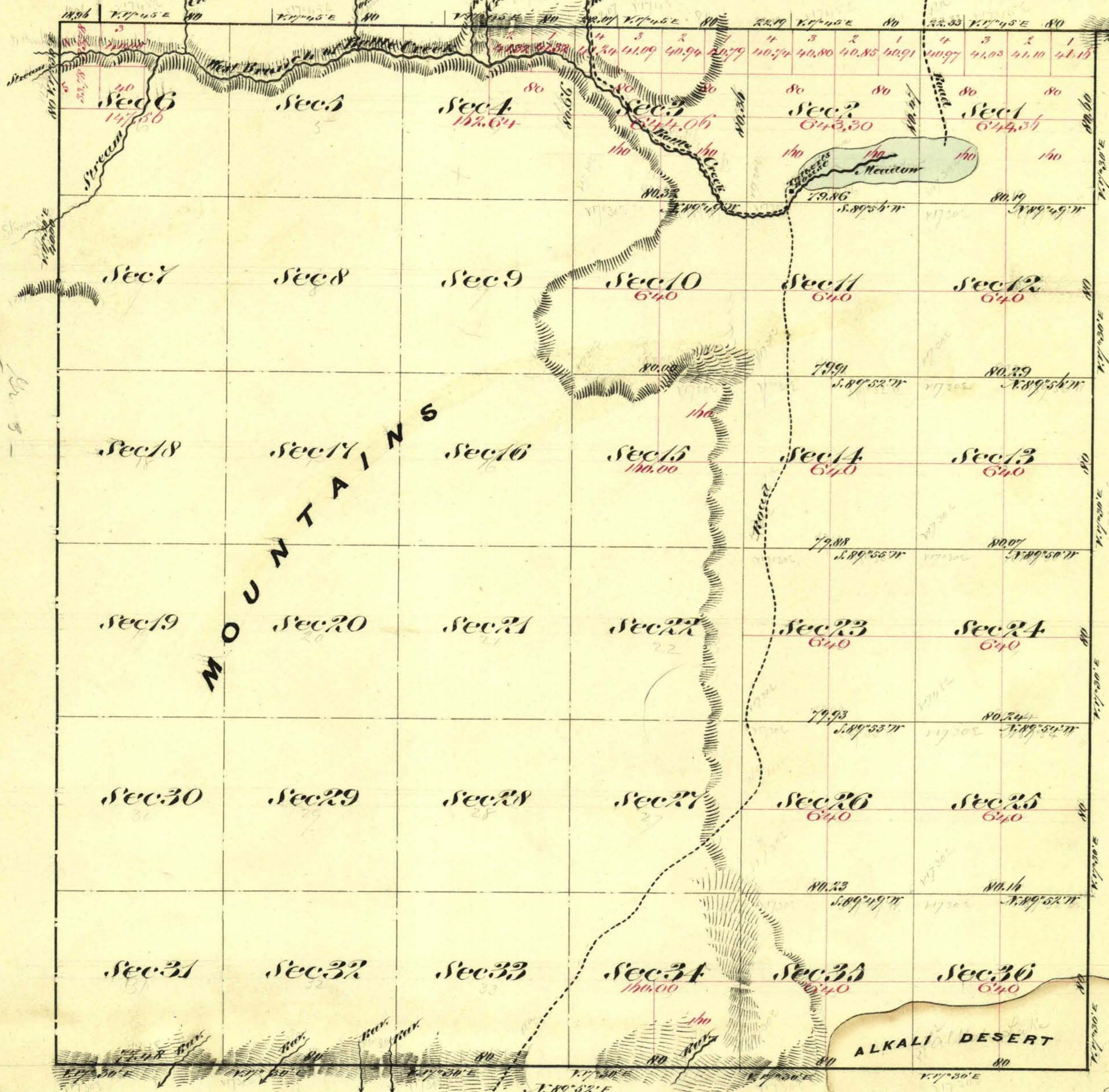


Township N^o 10 North Range N^o 27 East Mount Diablo Meridian



Aggregate Area of Public Land (Surveyed) 9,401.92 Acres
 Estimated " " Mountains (unsurveyed) 13,334.12 "
 Aggregate 22,736.04 "

Commenced September 25th 1873
 Completed " 29th "

Subdivision lines not otherwise noted run with a Variation of 1/2° East
 The above Map of Township N^o 10 North Range N^o 27 East Mount Diablo Meridian is strictly conformable to the field notes of the Surveys thereof on file in this Office, which have been examined and approved
 U.S. Surveyor General's Office
 Virginia City Nevada
 Dec 27th 1873

Surveys Designated	By Whom Surveyed	Date of Contract	Am't of Surveys M ^o C ^{ts} U ^{ts}	When Surveyed	Recon.
Township Lines	W. H. Skinner J. H. Sarside & Ch. Deke	July 10 th 1873	19 38 08	1873	58
Subdivision "	" " " " "	" " "	26 02 57	Sep ^r 1873	"
Conveyance "	" " " " "	" " "	66 59	"	"

0605

E. S. Davis
 U.S. Surveyor General Nevada
 T40N, R27E V.P.