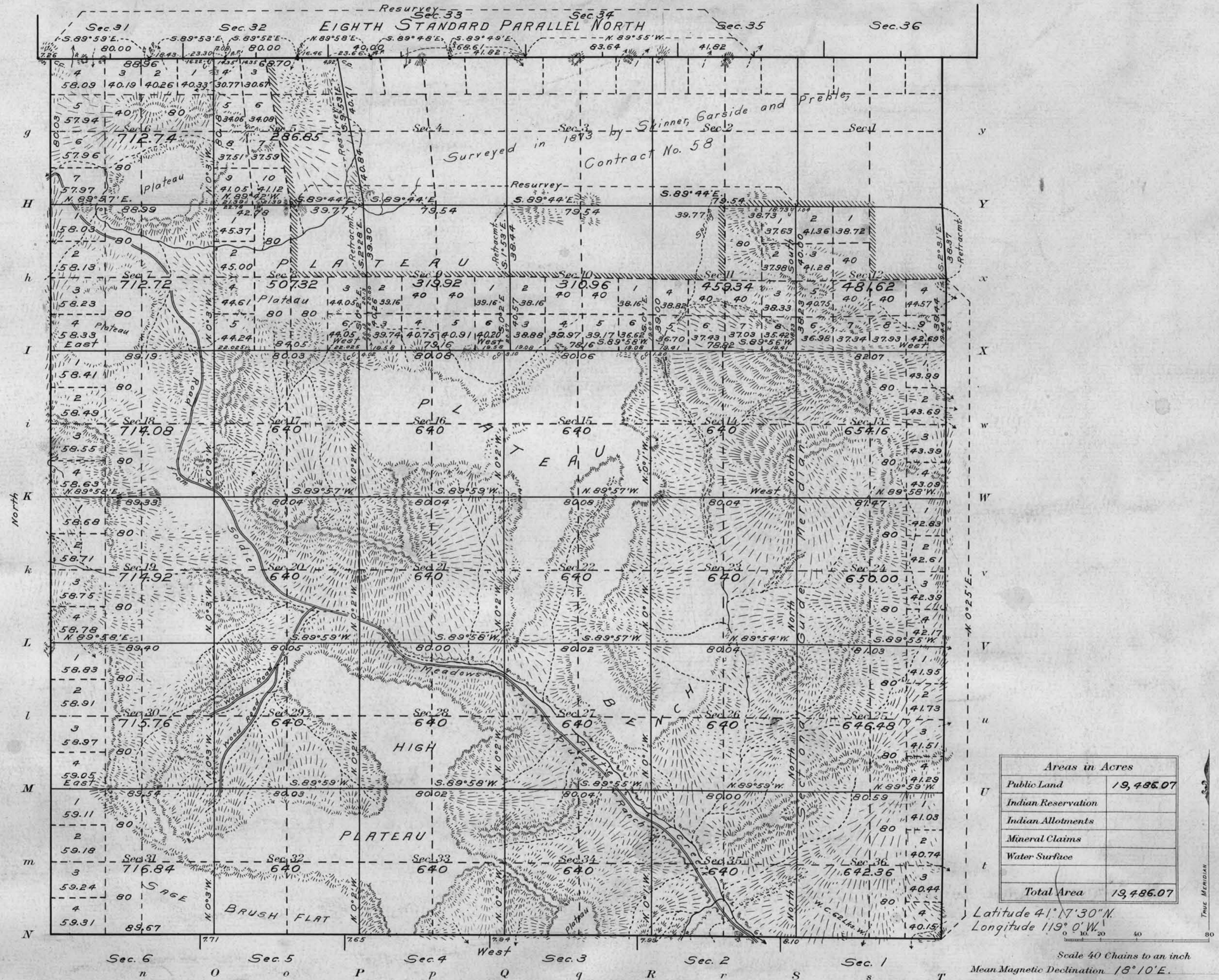


Township N^o 40 North, Range N^o 26 East, Mt. Diablo Meridian, Nevada



Areas in Acres	
Public Land	19,486.07
Indian Reservation	
Indian Allotments	
Mineral Claims	
Water Surface	
Total Area	19,486.07

Latitude 41° 17' 30" N.
 Longitude 119° 0' W.
 Scale 40 Chains to an inch
 Mean Magnetic Declination 18° 10' E.

Surveys Designated	By Whom Surveyed	Group No.	Date	Amount of Surveys			When Surveyed	
				Mls.	chs.	lks.	Begun	Completed
8th St. Par. N.-Resur	U. D. Archer	3	Aug. 4, 1910	4	74	07	Nov. 13, 1910	Nov. 22, 1910
" "	W. A. Pray	"	Oct. 12, 1912	"	"	"	Nov. 14, 1912	Nov. 12, 1912
South Bdy. East	W. E. Hoffman	"	May 6, 1913	6	9	67	Oct. 9, 1913	Oct. 17, 1913
" " Retrimt	"	"	"	4	39	44	Oct. 12, 1913	Oct. 20, 1913
West	"	"	"	0	38	37	"	Oct. 20, 1913
Subdivisions-Resur	"	"	"	6	0	3	Oct. 17, 1913	Oct. 25, 1913
" " Retrimt	"	"	"	4	39	94	Oct. 27, 1913	Oct. 29, 1913
"	"	"	"	0	77	74	Oct. 31, 1913	Nov. 3, 1913
"	"	"	"	50	53	22	Oct. 17, 1913	Nov. 5, 1913

The above map of Township No. 40 N., Range No. 26 E. of the Mt. Diablo Meridian Nevada is strictly conformable to the field notes of the survey thereof on file in this office, which have been examined and approved
 U. S. Surveyor General's Office.
 Reno, Nevada, May 23, 1914.

Worthen Kyle
 Surveyor General.