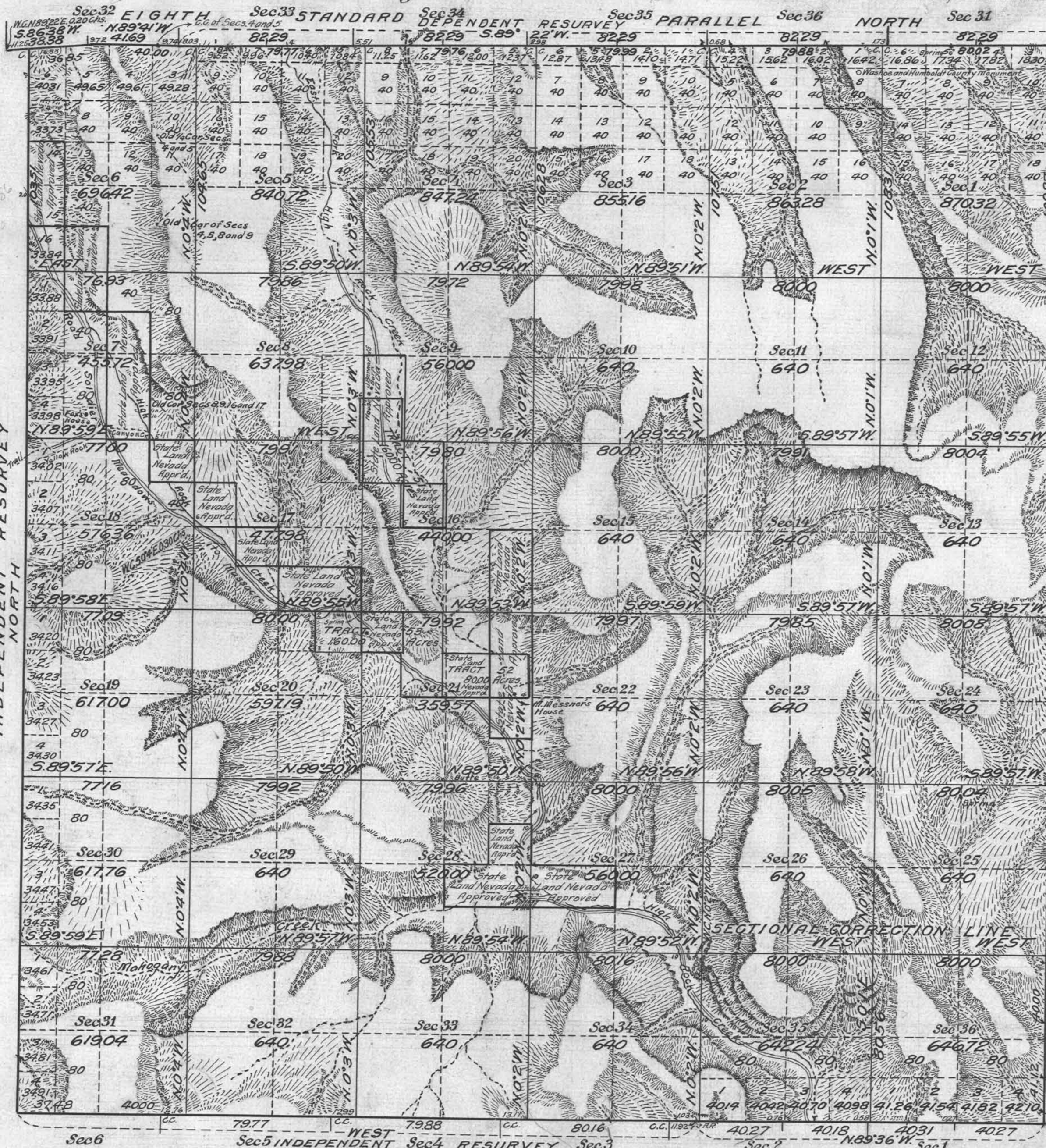


Resurvey and Survey of Township No 40 North Range No 23 East Mt Diablo Meridian, Nevada

IN TWO SHEETS
SHEET I



NOTE
Surveyor reports indications of gold, silver, lead, copper and chrome
RESURVEYED SECTIONS AND FRACTIONAL SECTIONS
Secs. 4, 5, 9, 15, 16, 22, 25, 26, 35, 36, NE¹/₄ Sec. 1, NW¹/₄ Sec. 3, NE¹/₄ Sec. 6, E¹/₂ Sec. 8, SW¹/₄ Sec. 10, E¹/₂ Sec. 17, NE¹/₄ Sec. 20, N¹/₂ Sec. 21, SW¹/₄ Sec. 23, SE¹/₄ Sec. 24, E¹/₂ Sec. 27, NE¹/₄ Sec. 34.

ENTRY CONFORMING TO LINES WITH CHANGED DESCRIPTION IN T.40N.R.23E.

ORIGINAL SURVEY		RESURVEY		Entryman
Subdivision	Kind of Entry	Subdivision	Kind of Entry	Status in Land Office
5 E ¹ / ₂ SW ¹ / ₄	6	14 and 15	State Selection	Approved Nevada
8 NW ¹ / ₄ NE ¹ / ₄	6	SE ¹ / ₄ SW ¹ / ₄	State Selection	Approved Nevada
8 SW ¹ / ₄ NE ¹ / ₄	7	NE ¹ / ₄ NW ¹ / ₄	State Selection	Approved Nevada
8 NE ¹ / ₄ SE ¹ / ₄	7	SW ¹ / ₄ NE ¹ / ₄	State Selection	Approved Nevada
8 SE ¹ / ₄ SE ¹ / ₄	7	NW ¹ / ₄ SE ¹ / ₄	State Selection	Approved Nevada
17 NE ¹ / ₄ NE ¹ / ₄	7	SW ¹ / ₄ SE ¹ / ₄	State Selection	Approved Nevada
16 SW ¹ / ₄ NW ¹ / ₄	18	NE ¹ / ₄ NE ¹ / ₄	State Selection	Approved Nevada
16 NE ¹ / ₄ SW ¹ / ₄	17	SW ¹ / ₄ NW ¹ / ₄	State Selection	Approved Nevada
16 SW ¹ / ₄ SE ¹ / ₄	17	NE ¹ / ₄ SW ¹ / ₄	State Selection	Approved Nevada
21 NE ¹ / ₄ NE ¹ / ₄	17	SW ¹ / ₄ SE ¹ / ₄	State Selection	Approved Nevada
22 NW ¹ / ₄ NW ¹ / ₄	17	SE ¹ / ₄ SE ¹ / ₄	State Selection	Approved Nevada
22 SE ¹ / ₄ NW ¹ / ₄	21	NW ¹ / ₄ NW ¹ / ₄	State Selection	Approved Nevada
22 NW ¹ / ₄ SE ¹ / ₄	21	SW ¹ / ₄ NE ¹ / ₄	State Selection	Approved Nevada
22 NE ¹ / ₄ NE ¹ / ₄	16	SE ¹ / ₄ SE ¹ / ₄	State Selection	Approved Nevada
22 SE ¹ / ₄ NE ¹ / ₄	21	NE ¹ / ₄ NE ¹ / ₄	State Selection	Approved Nevada
22 NE ¹ / ₄ SE ¹ / ₄	21	SE ¹ / ₄ NE ¹ / ₄	State Selection	Approved Nevada
22 SE ¹ / ₄ SE ¹ / ₄	21	NE ¹ / ₄ SE ¹ / ₄	State Selection	Approved Nevada
15 SE ¹ / ₄ SE ¹ / ₄	16	NE ¹ / ₄ SE ¹ / ₄	State Selection	Approved Nevada
15 NW ¹ / ₄ SE ¹ / ₄	16	SE ¹ / ₄ NW ¹ / ₄	State Selection	Approved Nevada
15 SE ¹ / ₄ NW ¹ / ₄	16	NW ¹ / ₄ NW ¹ / ₄	State Selection	Approved Nevada
15 NE ¹ / ₄ NW ¹ / ₄	9	SW ¹ / ₄ SW ¹ / ₄	State Selection	Approved Nevada
10 SE ¹ / ₄ SW ¹ / ₄	9	NW ¹ / ₄ SW ¹ / ₄	State Selection	Approved Nevada
27 NE ¹ / ₄ SE ¹ / ₄	28	SE ¹ / ₄ NE ¹ / ₄	State Selection	Approved Nevada
27 SW ¹ / ₄ SE ¹ / ₄	28	NW ¹ / ₄ SE ¹ / ₄	State Selection	Approved Nevada
27 SE ¹ / ₄ SE ¹ / ₄	28	NE ¹ / ₄ SE ¹ / ₄	State Selection	Approved Nevada
26 SW ¹ / ₄ SW ¹ / ₄	27	NW ¹ / ₄ SW ¹ / ₄	State Selection	Approved Nevada
26 SE ¹ / ₄ SW ¹ / ₄	27	NE ¹ / ₄ SW ¹ / ₄	State Selection	Approved Nevada

Tracts Numbers 51 to 53 inclusive represent the positions and forms of these claims under their original description as located with reference to the south boundary of the township as resurveyed by U.S. Surveyor Hoffman in 1919.

INDEX TO SEGREGATED TRACTS IN T.40N.R.23E.

TRACT NUMBER	ENTRY	ENTRYMAN	SUBDIVISIONS	SEC	STATUS IN LAND OFFICE
51	N.E. 09257	Jean Bernard	SW ¹ / ₄ SW ¹ / ₄ and SE ¹ / ₄ NW ¹ / ₄	9	Valid
52	N.E. 09306	Maggie Messner	S ¹ / ₂ NE ¹ / ₄	21	Valid
53	N.E. 09345	George W. Wimer	NE ¹ / ₄ NE ¹ / ₄ and NW ¹ / ₄ NW ¹ / ₄	21	Valid

Area in Acres

Public Land	22900.70
-------------	----------

LATITUDE 41° 20' N. Scale 40 Chains to an inch
LONGITUDE 119° 19' W.
Mean Magnetic Declination 18° 20' E.

Surveys Designated	By Whom Surveyed	No.	Date	Amount of Surveys		When Surveyed	
				Mls.	chs.	Begun	Completed
8th St. Pat. N. Dep. Res.	Emil Vogt U.S.	48	Sept. 1, 1916	6	11	52	Nov. 21, 1918 July 4, 1919
E. Ward's Boys Ind. Res.	Cadastral Engineer		Oct. 11, 1917	18	51	38	Oct. 9, 1918 July 9, 1919
Subdivisions Ind. Res.			and	61	37	35	Oct. 14, 1918 July 8, 1919
Metes and Bounds			July 15, 1921	6	40	33	July 26, 1919 Nov. 12, 1921

Resurvey and Survey of
The above map of Township No. 40 North Range No. 23 East of the Mt. Diablo Meridian Nevada is strictly conformable to the field notes of the survey thereof on file in this office, which have been examined and approved
U. S. Surveyor General's Office.
Reno, Nevada September 26, 1922

J. Cholder
Surveyor General.