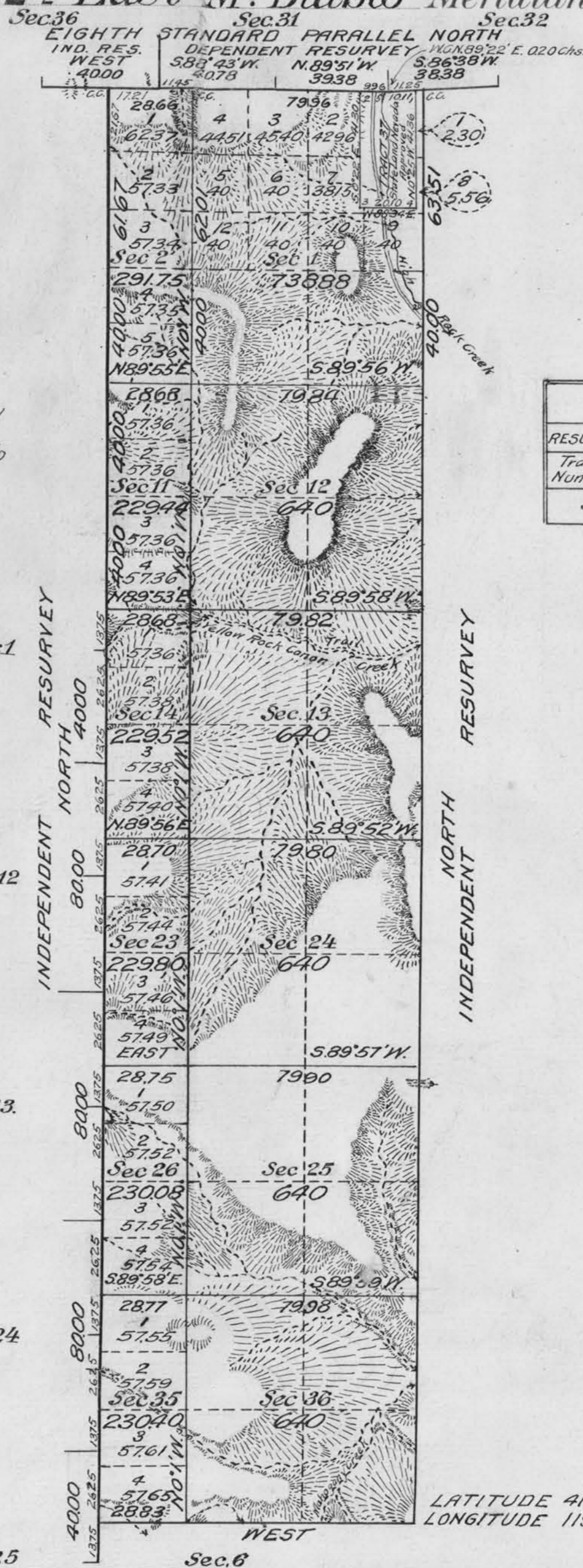


Township No. 40 North Range No. 22¹/₂ East M^t Diablo Meridian, Nevada

The tract segregation shown hereon represents the position and form of the claim under its original description as referred to the original survey; located as such on the ground according to the best available evidence of its true position.



INDEX TO SEGREGATED TRACT IN T.40 N., R.22 ¹ / ₂ E.					
RESURVEY	ORIGINAL SURVEY				
Tract Number	Entry No.	Entryman	Subdivisions	Sec.	Status in Land Office
37	State Selection	Nevada	Lot 4 and SW ¹ / ₄ NW ¹ / ₄	5	Approved

Area in Acres	
Public Land	53 79.87
Total Area	53 79.87

LATITUDE 41°20' N.
LONGITUDE 119°26' W.

Scale 40 Chains to an inch
Mean Magnetic Declination

Surveys Designated	By Whom Surveyed	Group		Amount of Surveys			When Surveyed	
		No.	Date	Mls.	chs.	lks.	Begun	Completed
8 th St. Par. N. Dep. Res.	Emil Knight U.S.	48	Sept. 1, 1916	1	55	75	Nov. 21, 1918	July 14, 1919
South Boundary	Cadastral Engineer		and	1	28	83	June 3, 1919	June 3, 1919
East Boundary Ind. Res.	"		July 15, 1921	6	23	51	May 31, 1919	July 9, 1919
West Boundary Ind. Res.	"		"	6	21	67	June 3, 1919	July 15, 1919
Subdivisions	"		"	13	4	23	June 7, 1919	July 16, 1919
Mets. and Bounds	"		"	1	32	83	July 14, 1919	Nov. 12, 1921

The above map of Township No. 40 North Range No. 22¹/₂ East of the M^t Diablo Meridian Nevada is strictly conformable to the field notes of the survey thereof on file in this office, which have been examined and approved

U. S. Surveyor General's Office.
Reno Nevada September 26, 1922

J. C. Sulder
Surveyor General.