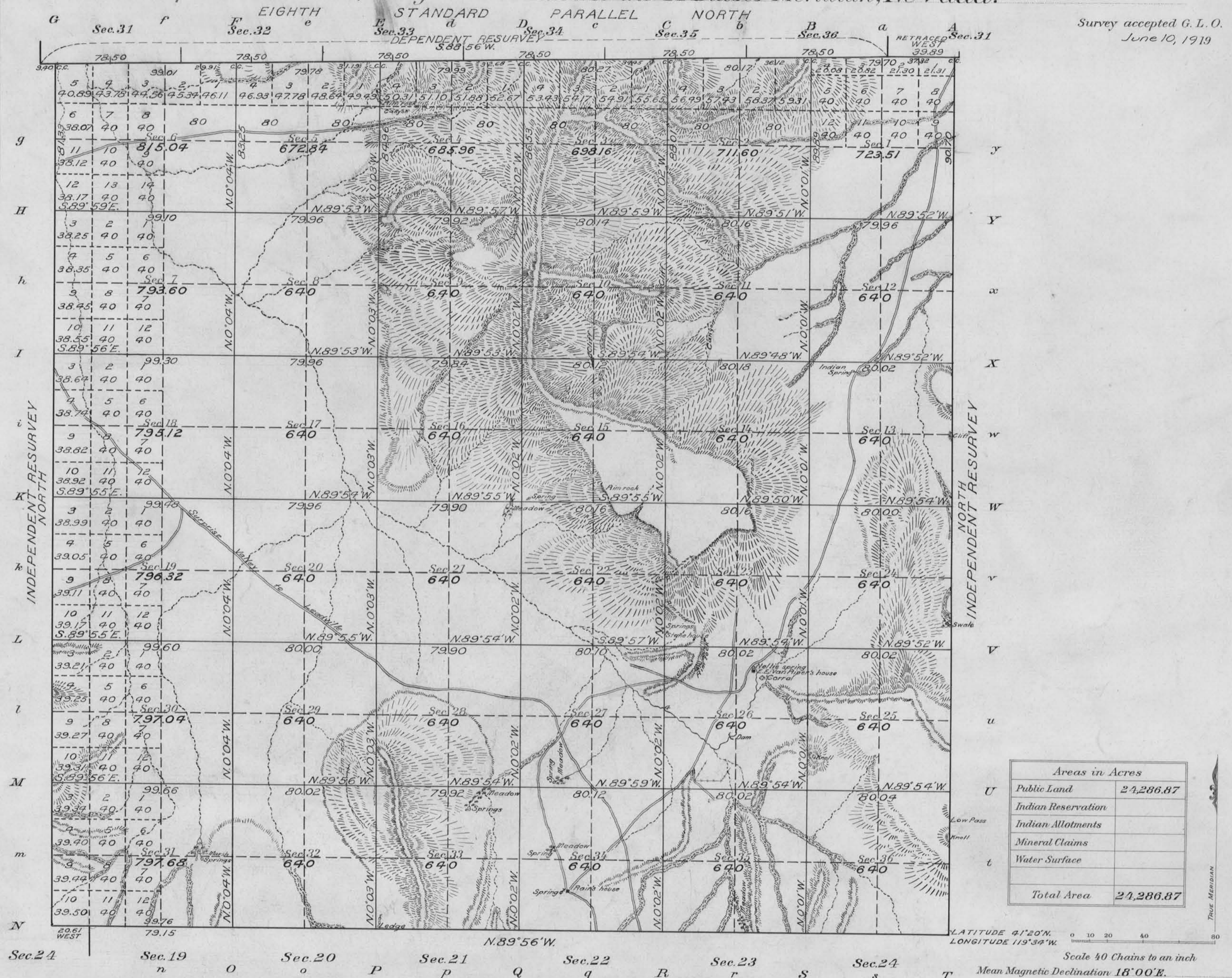


# Township No 40 North, Range No 21 East of the Mt Diablo Meridian, Nevada.



Survey accepted G. L. O.  
June 10, 1919

Areas in Acres	
Public Land	24,286.87
Indian Reservation	
Indian Allotments	
Mineral Claims	
Water Surface	
<b>Total Area</b>	<b>24,286.87</b>

Surveys Designated	By Whom Surveyed	Group		Amount of Surveys		When Surveyed	
		No.	Date	Mts.	chs.	Began	Completed
South Boundary	Harry W. Reppert	48	Sept. 1, 1916.	5	79 15	Sept. 25, 1917	Oct. 1, 1917
E. & W. Bdy. Independent Res.	U.S. Surveyor and	12		12	03	Sept. 27, 1917	Oct. 3, 1917
8th St. Par. N. Dependent Res.	Lemuel P. Mercer,	5		71	00	Oct. 2, 1917	Oct. 4, 1917
8th St. Par. N. Retraced	U.S. Transitman.	39		39	89	Oct. 3, 1917	Oct. 3, 1917
Subdivisions		61		50	38	Oct. 4, 1917	Oct. 11, 1917

The above map of Township No. 40 North, Range No. 21 East of the Mt. Diablo Meridian, Nevada is strictly conformable to the field notes of the survey thereof on file in this office, which have been examined and approved

U. S. Surveyor General's Office.  
Reno, Nevada, November 29, 1918

*John B. Sullivan*  
Surveyor General.