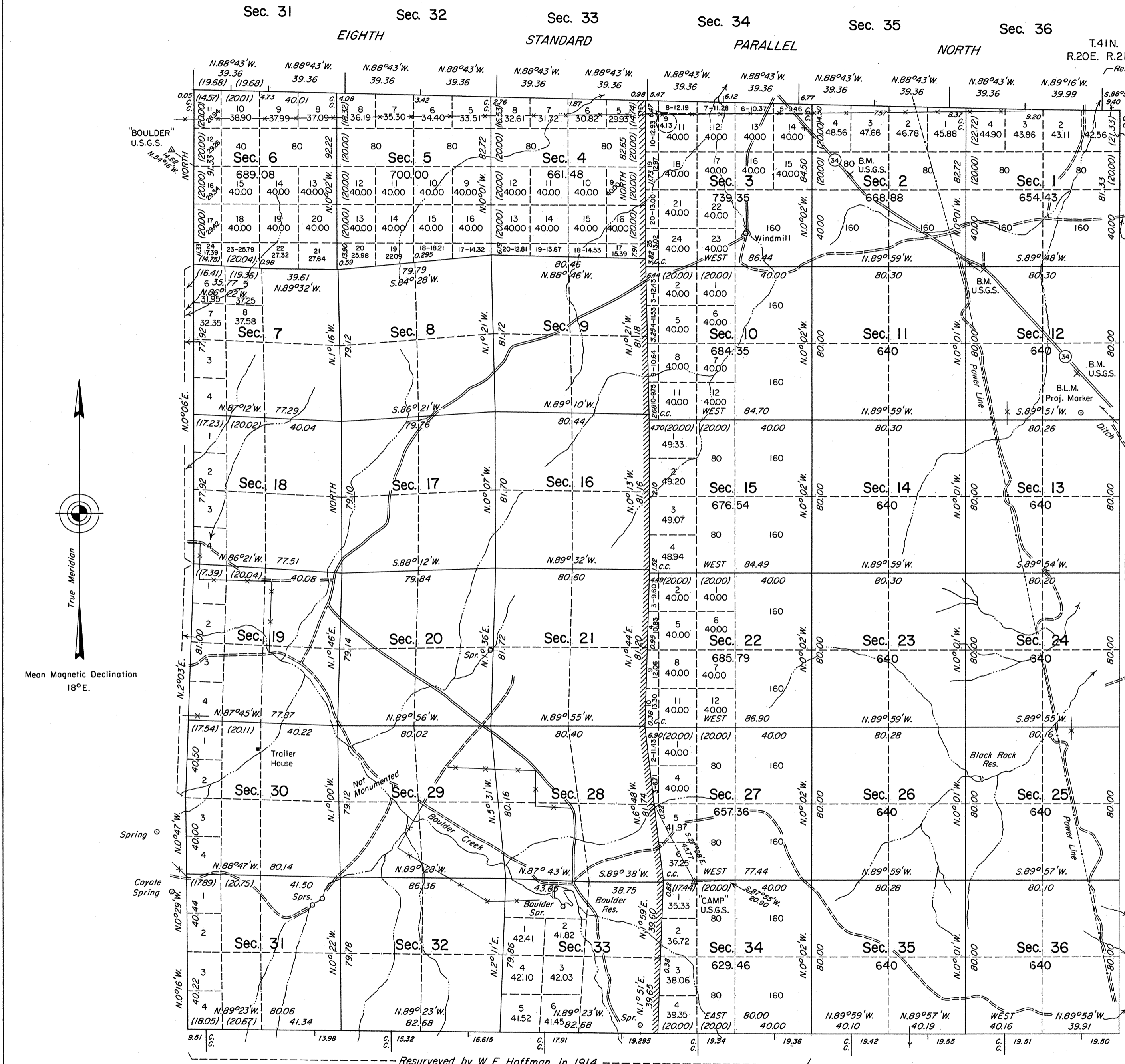


TOWNSHIP 40 NORTH, RANGE 20 EAST, OF THE MOUNT DIABLO MERIDIAN, NEVADA

DEPENDENT AND INDEPENDENT RESURVEYS AND SURVEY



History of the earlier surveys is contained in the field notes.

This plat represents a dependent resurvey of the Eighth Standard Parallel North, through Range 20 East and a portion of the south and west boundaries and a portion of the subdivisional lines, designed to restore the corners in their original locations according to the best available evidence and the independent resurvey of a portion of the west boundary and a portion of the subdivisional lines and the survey of a portion of the subdivisional lines of T. 40 N., R. 20 E., Mount Diablo Meridian, Nevada.

Areas and lottings, except as shown hereon, are as shown on the plat approved January 22, 1879.

Survey executed by Robert A. Pratt, Cadastral Surveyor, beginning August 29, 1984 and completed October 5, 1985, under Special Instructions dated August 23, 1984 and Supplemental Special Instructions dated October 2, 1985 for Group No. 616, Nevada.

UNITED STATES DEPARTMENT OF THE INTERIOR
BUREAU OF LAND MANAGEMENT
Reno, Nevada September 23, 1986

This plat is strictly conformable to the approved field notes, and the survey, having been correctly executed in accordance with the requirements of law and the regulations of this Bureau, is hereby accepted.

For the Director
Laurel E. Bland
Chief Cadastral Surveyor

Latitude 41°20'03.4"N.
Longitude 119°40'36.5"W.

