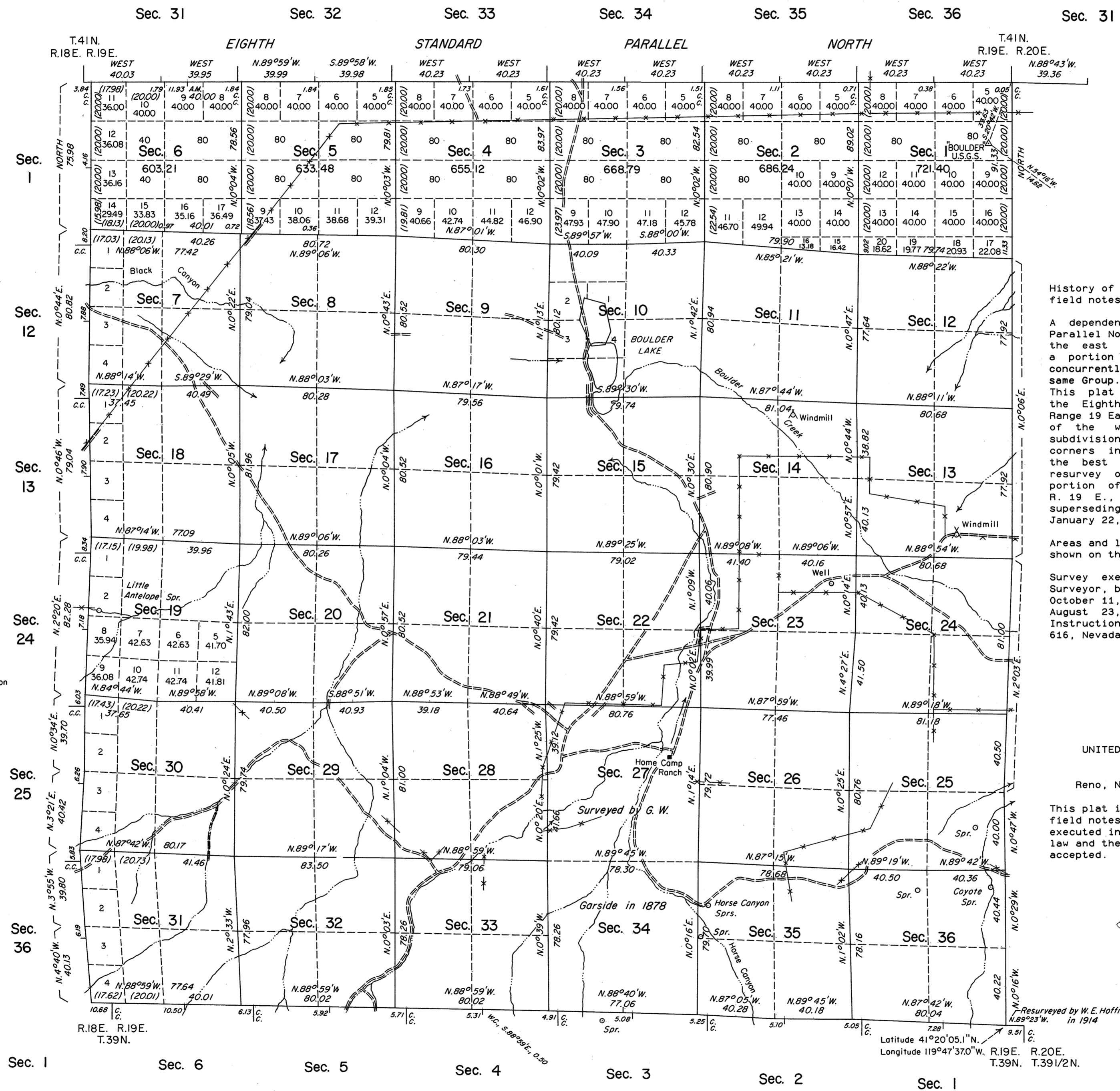


ORIGINAL

TOWNSHIP 40 NORTH, RANGE 19 EAST, OF THE MOUNT DIABLO MERIDIAN, NEVADA
DEPENDENT AND INDEPENDENT RESURVEYS



History of the earlier surveys is contained in the field notes.

A dependent resurvey of the Eighth Standard Parallel North, through R. 20 E., and a portion of the east boundary and an independent resurvey of a portion of the east boundary, was executed concurrently under T. 40 N., R. 20 E., of this same Group.

This plat represents a dependent resurvey of the Eighth Standard Parallel North, through Range 19 East and the south boundary and a portion of the west boundary and a portion of the subdivisonal lines, designed to restore the corners in their original locations according to the best available evidence and the independent resurvey of a portion of the west boundary and a portion of the subdivisonal lines of T. 40 N., R. 19 E., Mount Diablo Meridian, Nevada, superseding a portion of the plat approved January 22, 1879.

Areas and lottings, except as shown hereon, are as shown on the plat approved January 22, 1879.

Survey executed by Robert A. Pratt, Cadastral Surveyor, beginning August 29, 1984 and completed October 11, 1985, under Special Instructions dated August 23, 1984 and Supplemental Special Instructions dated October 2, 1985 for Group No. 616, Nevada.

UNITED STATES DEPARTMENT OF THE INTERIOR
BUREAU OF LAND MANAGEMENT

Reno, Nevada February 10, 1987

This plat is strictly conformable to the approved field notes, and the survey, having been correctly executed in accordance with the requirements of law and the regulations of this Bureau, is hereby accepted.

For the Director

Larel E. Bland
Chief Cadastral Surveyor

Resurveyed by W. E. Hoffman in 1914
Latitude 41°20'05.1"N.
Longitude 119°47'37.0"W. R.19E. R.20E.
T.39N. T.39 1/2 N.

